



Established 1857.

# Thomas G. Pinnock

## PRACTICAL SLATE ROOFER



### Slate, Tin and Copper Roofing.

Copper and Galvanized Iron Gutters and Conductors. All work warranted. Repairing promptly attended to.

Orders solicited from all parts of Essex County.

OFFICE AND YARD,

7 DODGE STREET, - - SALEM, MASS.

Residence, 4 Fairfield Street.

Telephone 780.

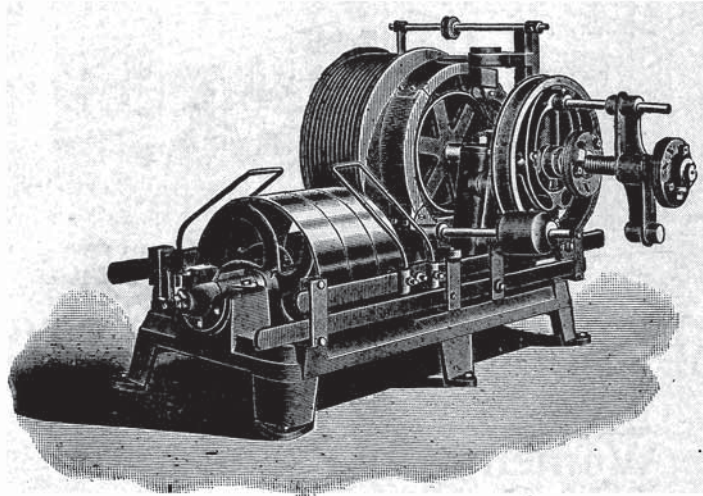
# SALEM ELEVATOR WORKS,

CHAS. F. CURWEN, PROPRIETOR.

MANUFACTURERS OF

Electric and Belt Power, Passenger  
and Freight

# ELEVATORS



SEND FOR ILLUSTRATED CATALOGUE.



CORNER CANAL STREET AND BROADWAY,  
SALEM, MASS.

**Wm. G. Webber Co.**  
SALEM MASS.

**Wm. G. Webber Co.**  
SALEM MASS.



## ESSEX COUNTY DRY GOODS STORE.

Women's and Children's  
Outfitters

FROM "HEAD TO FOOT."

All in town Electrics stop at our door. All Suburban Cars stop  
within a few feet of either entrance to our store.

"On Two Streets" Essex and Washington

# Eagle Iron Foundry,

(INCORPORATED.)

ALONZO H. SMITH, President.

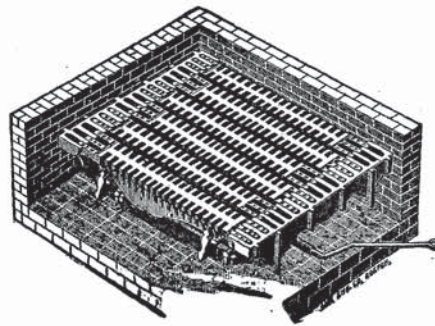
MANUFACTURERS OF

**Smith Patent Grate Bars**

...AND...

**Hub Patent Shaking Grate**

Grates for all kinds of Fuel constant-  
ly on hand.



Also all kinds of Machinery and Building Castings.  
and Mouthpieces for Steam Boilers.

Junction of Canal and Pond Streets,  
Salem, Mass.

TELEPHONE 318-12.

# C. M. Kelley & Son



Tar Sidewalks, Cellar Bottoms, Etc. Asphalt,  
Brick and Granolithic Paving.  
Sand and Gravel.

---

*ALL WORK PROMPTLY ATTENDED TO.*

---

Telephone Connection.

---

Works and Residence,

**57 Loring Ave., Salem, Mass.**

The BROCKWAY-SMITH Corp.

BOSTON



Doors, Sash and Blinds,  
Window and Door  
Frames, Mantels,  
Shelves and Stairwork,  
Posts and Columns,  
Mouldings, Medicine  
Cabinets, Korelock  
Birch Veneered Doors.

Boston Store,

Nos. 15-19 Washington Street.

(North.)

Haymarket Square.

Telephone, Richmond, 332, 333 and 334.

Lynn Store,

No. 117 Pleasant Street.

Telephone, Lynn 1040.

# SALEM IRON FOUNDRY,

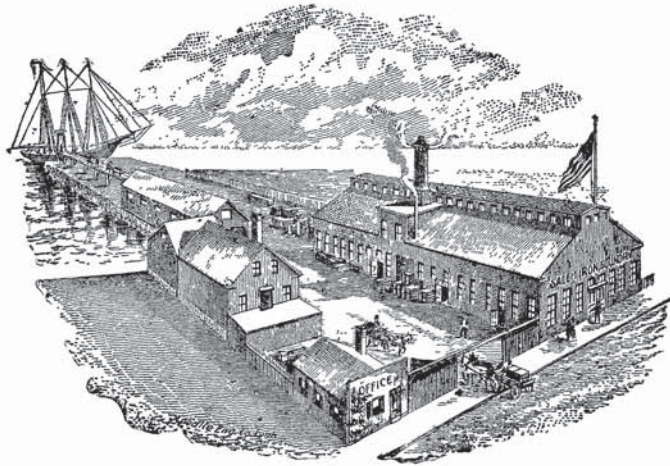
(INCORPORATED.)

W. S. McINTIRE, President and Treasurer.

F. W. DELANO, Secretary.

MANUFACTURERS OF

Light and  
Heavy **MACHINERY CASTINGS**



**IMPROVED FURNACE GRATE BARS**

FOR ALL KINDS OF

## **STEAM BOILERS.**

ESTIMATES FURNISHED ON IRON COLUMNS, BEAMS, ETC.,  
FOR BUILDINGS.

**235, 237, 239, 241 DERBY STREET, - - SALEM, MASS.**

TELEPHONE CONNECTION.



# VICTOR EKLUND,

TIN, SHEET IRON, AND COPPER WORKER.  
TIN, COPPER AND STEEL ROOFER. ARCHITECTURAL SHEET METAL WORK FOR BUILDINGS.

---

Manufacturer of

**Metal Skylights, Gutters, Cornices, Conductors, Finials and Metal Ceilings.**

---

Chimney Tops and Ventilators. Hot Air Heating and Ventilation. Furnace Repairing and Jobbing.

**Shop, 76 Lafayette Street, - Salem, Mass.**

TELEPHONE CONNECTION.

---

Telephone 1390.

Established 1880.

P. O. Box 2640.

## Webster F. Putnam & Co., Bankers and Brokers,

INVESTMENT SECURITIES.

---

State Mutual Building, No. 50 Congress Street,  
ROOM 217, BOSTON.

WEBSTER F. PUTNAM, Member Boston Stock Exchange.

LOUIS H. PARKHURST.

# J. J. QUINLAN & CO.,

J. S. SMART, Manager.

## Stocks, Bonds, Grain, Etc.

Stocks and Bonds bought and sold for cash or carried on a margin. Deliveries promptly made and information given on all securities.

53 WASHINGTON STREET, - SALEM, MASS.  
MANNING BLOCK. Telephone 140.

"Salem's Oldest Broker."

## B. O. GROSS Commission Stock Broker

STOCKS, BONDS, GRAIN, Etc.

Deliveries promptly made, Dividends Collected, Rights bought and sold. Information cheerfully furnished on all Securities. Monthly High and Low Pocket Manual mailed on application.

DIRECT PRIVATE WIRES.

Telephone 70.

60 Washington Street, - Salem, Mass.

SUITE 4.

REFERENCE: NAUMKEAG NATIONAL BANK.



# Security Safe Deposit & Trust Co.,

Bergengren Block, 345 Union Street,  
LYNN, MASS.

BENJAMIN F. SPINNEY, President.  
LUTHER S. JOHNSON and SAMUEL J. HOLLIS, Vice-Presidents.  
HARRISON P. BURRILL, Treasurer.

**Interest Paid on all Deposits. Accounts opened Subject to Check.**  
**Safe Deposit Boxes to Rent in Burglar, Fire and Water Proof Vaults.**

Branch Office, 25 Market Square, West Lynn, Mass.

C. I. WILKINSON.

W. F. WILKINSON.

FRANK A. PAGE.

## W. PAGE COUNTER COMPANY,

Manufacturers of

**Moulded Sole Leather and  
Pasted Leather Counters,  
and all kinds of Inner Soles**

FACTORIES:

5 and 7 Dodge Street Court,  
Salem, Mass.

Cable address, "Chropag"  
Telephone 578-3.



C. F. SMITH, President.

T. H. O'SHEA, Treasurer.

T. H. Lyons, Sec'y and Gen. Manager.

## LIBERTY COUNTER CO.

Manufacturers of

**Boot and Shoe Moulded  
Counters.**

Office and Factory, 38-40 Winthrop St., - Salem, Mass.

## E. S. TYNAN HEEL CO.,

**MEN'S and BOYS'  
HEELS.**

Rear 31 Boston Street, - Salem, Mass.

# Harmony Grove Conservatories,

GEORGE W. CREESY, Superintendent.



FLORAL AND  
PLANT

**Decorator.**



HOLIDAY AND  
EASTER FLOWERS  
A SPECIALTY.

Floral Work of all kinds.

30 Grove Street, - - Salem, Mass.

Telephone Connection.



**Patrick Cotter,**

LANDSCAPE GARDENER,

Grower of Shrubs and Hardy Plants, Fruit and Ornamental Trees. Grading,  
Sodding, etc. Everything furnished for the lawn or garden at lowest prices.

NO. 25 ABORN STREET, SALEM, MASS.

**PIERRE TARDIF,**

**Concrete Paver,**

Of Sidewalks, Crossings, Cellar Bottoms, Etc.

COARSE AND FINE GRAVEL FOR SALE.

Gravel Pit, Corner Broadway and Loring Avenue, : Salem, Mass.

Residence, 16 Read Street, Castle Hill.

# Salem Commercial School,

126 WASHINGTON STREET.

A high grade, practical and successful Training School  
for business.

Book-keepers, stenographers and clerical help of all  
kinds supplied without charge.

Telephone 344.

GEORGE P. LORD, Principal.

NO BETTER SCHOOL AT ANY PRICE.

## S. D. SHEPARD & COMPANY,

DEALERS IN

### DRY GOODS.

Ladies' and Misses' Outside Garments.

Best Goods and Lowest Prices.

173 ESSEX STREET, - - SALEM, MASS.

BUILDING TRIMMINGS OF ALL STYLES AND SHADES.

Curbings and all  
kinds of Cement  
Constructions.



Posts.  
—  
Sidewalks.

Special attention given to the erection of Public Buildings. Also dealers in  
**Stone for Foundations, Curbings, Crosswalks, Etc.**

Estimates cheerfully given.

Tel. 107-2.

Quarries at South Peabody.

**Contractors and Builders.**

**DEARBORN BROTHERS & COMPANY,**

459 UNION STREET, LYNN, MASS.

# RUBBER STAMPS

Made To Order.

DATERS  
PADS  
INKS  
SIGN MARKERS  
SETS OF ALPHABETS  
STENCILS  
POCKET STAMPS, ALL KINDS

LARGEST STOCK IN THIS COUNTY.

*The Salem Press Company,*  
Salem, Massachusetts.

## GEORGE B. PRINCE & CO., GROCCERS

Flour, Tea, Coffee, Canned Goods, Dried Fruits, Pastry, Etc.  
Agent for King Arthur Flour.  
Diamond Creamery Butter.

85 WASHINGTON STREET, SALEM, MASS.  
TELEPHONE.

# Wadleigh & Morse

Agents for HERALD RANGES.

Dealers in

Stoves, Furnaces  
and Ranges.

Tin, Sheet Iron and Copper Workers.

Milk Cans, Mixing Cans, Common Sense and  
Tin Top, Milk Bottles, Bottle Caps, Brushes and  
Milk Dealers' Supplies of all kinds.



81 North Street, = Salem, Mass.

# C. F. TOMPKINS, House Furnishings.

Call on us for Stanford Ranges and all stove repairs.

77 WASHINGTON STREET, - SALEM, MASS.

NEAR CITY HALL.

Telephone 129-2.

**William A. Irving,**  
Manfr. of all  
kinds of **Wood and Paper Boxes**  
SALEM, MASS.

**SALEM KINDLING WOOD COMPANY,** Dealers in  
all kinds of  
**PREPARED KINDLING, HARD AND PINE WOOD.**

Telephone Connection.

ALSO PINE AND HEMLOCK SLABS.

340 to 346 Bridge Street,

- -

Salem, Massachusetts.



Established 1865.

## FISK & ARNOLD

UNITED STATES GOVERNMENT

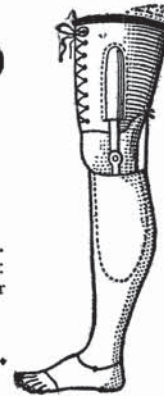
Manufacturers of

### Artificial Legs and Arms.

Appliances for Shortened Limbs, Resections, Deformities, etc.  
Sole Manufacturers of the LINCOLN ARM. As a specialty:  
False Calves, Silk Elastic Stockings and Wool Socks to wear  
with artificial limbs. Send for New Illustrated Catalogue.

3 Boylston Place, - Boston, Mass.

Telephone Connection.



**Charles E. Curtis & Son,**  
**Fine Granite and Marble**  
**Memorials.**

OFFICE AND  
SHOW ROOMS

14 New Derby St., - Salem.

Works, Canal Street, Salem, Mass.

**K. W. HANDY,**

RESIDENCE, 163 NORTH ST.

**Carpenter and Contractor.**

Personal Attention given to all Work.  
Orders by mail promptly attended to. Thirty years Experience.

Shop, 73 1-2 North Street, Salem

TELEPHONE CONNECTION.

**E. J. SWEENEY, - Leather Dealer.**

Goat, Grain, Kid, and Sheep. Whole Stock and Remnants.

16 DODGE STREET, Tel. Con. SALEM, MASS.

**Excelsior Laundry Company**

Telephone Connection.

227 Washington Street, - - Salem, Mass.

**H. KRAVITZ,  
CUSTOM TAILOR**

Ladies' and Gents' Suits Made to Order in the Latest Style  
From \$15.00 Up.

Cleaning, Dyeing, Pressing and Repairing. Special attention given to Ladies' Repairing.  
First-class workmanship only. Come and give us a trial.

174 Rantoul Street, - - Beverly, Mass.



THE  
NAUMKEAG DIRECTORY

FOR

SALEM,

BEVERLY, DANVERS, MARBLEHEAD, PEABODY,  
ESSEX AND IPSWICH.

---

CONTAINING A LIST OF THE INHABITANTS AND BUSINESS  
FIRMS OF THE DISTRICT AND OTHER MATTERS  
OF GENERAL AND LOCAL INTEREST.

No. 14



1906

COMPILED AND PUBLISHED BY

THE HENRY M. MEEK PUBLISHING CO.  
SALEM, MASS,

---

**Price, \$4.00**

Copyright 1906 by the Henry M. Meek Publishing Co.

## PREFACE

On presenting this second annual volume of the Naumkeag Directory, the publishers would again thank their patrons, and all others who have contributed to the success of the book. As last year, separate directories have been issued for the cities of Salem and Beverly, and for the towns of Danvers, Marblehead, Peabody and Ipswich, thus enabling the residents of these places to secure a directory at a nominal price.

The publishers have again extended their territory, including Ipswich in this volume, as no directory of this town had been published for several years, and requests from many patrons induced the publishers to add it to the already complete Naumkeag.

It will be found that the directory is as complete and up-to-date as formerly, and no expense has been spared to make it worthy of the support which it has received, all the cities and towns having favored it with a generous patronage.

Owing to increased size of the book, it has been found necessary to make some abbreviations, and patrons will find that in case of names of single women, the word "Miss" has been eliminated.

Below will be found the table of names contained in the directory together with deaths and removals, and the number of changes and corrections necessary on this year's canvass. When it is considered that the smallest towns show changes amounting to between 55% and 60%, and Salem over 60%, it is not necessary to call attention to the amount of labor required to make the book complete, or the fact that a yearly directory is an acknowledged necessity.

HENRY M. MEEK PUBLISHING Co.,

60 Washington St., Salem, Mass.

### NUMBER OF NAMES IN NAUMKEAG DIRECTORY.

	*Total Number of Names.	†New Names and Changes in Address.	Deaths and Removals.
Salem, . . . . .	20,108	11,968	834
Beverly, . . . . .	9,534	6,572	683
Danvers, . . . . .	4,191	2,656	205
Marblehead, . . . . .	4,230	2,307	174
Peabody, . . . . .	6,434	3,960	281
Essex, . . . . .	949	—	171
Ipswich, . . . . .	1,987	—	—
Total, . . . . .	47,433	27,463	2,348

\*Including Deaths and Removals.

†Changes in General Directory only. Changes in Streets and Business not included.

BEVERLY—*continued.*

License Question, Vote on . . . . .	737
Mayor, Vote for, 1895 to 1905 . . . . .	736
Notaries Public . . . . .	713
Physicians . . . . .	715
Police Department . . . . .	724
Post Offices . . . . .	734
Railroad Stations . . . . .	752
Removals, Additions, etc. . . . .	49
School Department . . . . .	725
Societies, Institutions, etc. . . . .	727
Street and Householders Direc- tory, . . . . .	538
Ward Lines, . . . . .	750
Wharves, . . . . .	751

DANVERS.

Abbreviations, . . . . .	825
Advertisements, . . . . .	901
Banks, . . . . .	885
Buildings, Halls, etc. . . . .	823
Business Directory, . . . . .	870
Cemeteries, . . . . .	824
Churches, . . . . .	884
Clergymen, . . . . .	872
Danvers Insane Hospital, . . . . .	886
Fire Alarm, . . . . .	883
Fire Department, . . . . .	882
Historical Events, . . . . .	889
Inhabitants, Names of, . . . . .	825
Justices of the Peace, . . . . .	876
Lawyers, . . . . .	876
Notaries Public, . . . . .	878
Peabody Institute, . . . . .	887, 1331
Physicians, . . . . .	879
Post Offices, . . . . .	888
Railroad Stations, . . . . .	888
Removals, Additions, etc. . . . .	50
School Department, . . . . .	883
Societies, Institutions, etc. . . . .	884
Street Directory, . . . . .	822
Town Officers, . . . . .	882
Wharves, . . . . .	824

MARBLEHEAD.

Abbreviations, . . . . .	924
Abbot Hall, . . . . .	984, 1333
Advertisements, . . . . .	999
Banks, . . . . .	984
Buildings, Halls, etc. . . . .	922
Business Directory, . . . . .	971
Cemeteries, . . . . .	988
Churches, . . . . .	983
Clergymen, . . . . .	973
Custom House, . . . . .	988
Fire Alarm, . . . . .	923
Fire Department, . . . . .	982
Historical Events, . . . . .	989
Inhabitants, Names of . . . . .	924
Justices of the Peace, . . . . .	976
Lawyers, . . . . .	976
Notaries Public, . . . . .	977
Physicians, . . . . .	978

MARBLEHEAD—*continued.*

Post Offices, . . . . .	987
Railroad Stations, . . . . .	988
Removals, Additions, etc. . . . .	50
School Department, . . . . .	983
Societies, Institutions, etc. . . . .	984
Street Directory, . . . . .	920
Town Officers, . . . . .	982
Wharves, . . . . .	988

PEABODY.

Abbreviations, . . . . .	1015
Advertisements, . . . . .	1145
Banks, . . . . .	1104
Buildings, Halls, etc. . . . .	1014
Business Directory, . . . . .	1085
Cemeteries, . . . . .	1108
Churches, . . . . .	1102
Clergymen, . . . . .	1087
Fire Alarm, . . . . .	1101
Fire Department, . . . . .	1101
Historical Events, . . . . .	1109
Inhabitants, Names of . . . . .	1015
Justices of the Peace, . . . . .	1093
Lawyers, . . . . .	1093
Notaries Public, . . . . .	1095
Peabody Institute, . . . . .	1107
Physicians, . . . . .	1096
Police Department, . . . . .	1100
Post Offices, . . . . .	1108
Railroad Stations, . . . . .	1108
Removals, Additions, etc. . . . .	51
School Department, . . . . .	1102
Societies, Institutions, etc. . . . .	1103
Street Directory, . . . . .	1012
Town Hall, Plan of Seats, . . . . .	1335
Town Officers, . . . . .	1100

ESSEX.

Advertisements, . . . . .	1186
Buildings, Halls, etc. . . . .	1168
Business Directory, . . . . .	1181
Cemeteries, . . . . .	1168
Inhabitants, Names of . . . . .	1169
Offices, Churches, Post Offices, and Societies, . . . . .	1184
Railroad Stations, . . . . .	1185
Street Directory, . . . . .	1168

IPSWICH.

Advertisements, . . . . .	1251
Banks, . . . . .	1218
Buildings, Halls, etc. . . . .	1189
Business Directory, . . . . .	1219
Cemeteries, . . . . .	1190
Inhabitants, Names of . . . . .	1191
Post Offices, . . . . .	1218
Street Directory, . . . . .	1188
Town Officers, . . . . .	1226
Wharves . . . . .	1190

# INDEX TO ADVERTISERS

	Page		Page
Abell Clark O. Ipswich.....	1263	Boyle John Machine Co. Peabody.....	1162
Adam Kollen, 274 Essex.....	1308	Bradstreet A. J. Danvers.....	906
Adams Ephraim & Co. Boston.....	1442	Braman, Dow & Co. Boston.....	opp. 820
Adams J. T. Marblehead.....	1010	Brisbois Emile J. 65 Salem.....	1299
Agawam House, Ipswich.....	1254	Brockway-Smith Corp. (The), Boston.....	7
Alford Almon, 14 School.....	1368	Brogan James B. 27 Irving.....	523
Allen Albert G. Danvers.....	foot lines	Brooks C. H. Mrs. Peabody.....	1150
Allen & Tebbetts, Danvers.....	foot lines	Brown A. S. jr. Boston.....	1370
Allen's Nut Food Co., Beverly.....	795	Brown Bros. Co. 289 Essex.....	59
Almy, Bigelow & Washburn Inc. Salem and Beverly.....	back bone	Brown Charles T. Beverly.....	781
Amend Robert A. Danvers.....	913	Brown C. D. & Co. Boston.....	1445
American Degreasing Co. Peabody.....	532	Brown C. E. & Son, Ipswich.....	1261
American Loan & Trust Co. Boston.....	opp. 74	Brown Edward F. & Co. Ipswich.....	foot lines
American Tailoring Co. 81 Lafayette.....	61	Brown Edward H. 53 Washington.....	1362
Ames A. P. & Co. Peabody.....	1152	Brown-Talbot Co. 19 Oakland.....	head lines
Ames Studio, 252 Essex.....	1326	Brunh Robert C. Beverly.....	799
Annable W. H. & Co. r. 11 Chandler.....	528	Burley J. W. Danvers.....	915
Annis Peter W. Peabody.....	1157	Buba Wm. & Co. 227 and 230 Derby.....	1389
Appleton T. A. Salem and Beverly.....	1304	Buckham Robert B. 35 Church.....	1362
Appleton & Norton, 252 Essex.....	1314	Bullard (The), 131 Essex.....	1404
Appleton's Beverly & Salem Express Beverly.....	776	Burgess & Packard, Marblehead.....	1002
Asiatic National Bank, 125 Washington.....	1338	Burley Farm, Danvers.....	907 and 1392
Audet Alfred, 24 New Derby.....	1374	Burnett John F. Peabody.....	1161
Averill Arthur L. 209 Essex.....	1358	Bushby C. F. Peabody.....	1148
Babcock C. Mrs. 2644 Essex.....	1387	Bushby William jr. Peabody.....	1154
Bagley John A. 101 Washington.....	138	Butler F. A. Danvers.....	908
Bagley P. B. & G. Peabody.....	1161	Butman J. E. & Co. Peabody.....	foot lines
Baird-North Co. 250 and 254 Essex.....	1315	Byron F. F. Ipswich.....	1254
Baker Isaac D. 19 Sutton ave.....	1379	B. & B. Apparatus Co. 27 Central.....	1305
Baker Otis M. Beverly.....	789	Cabeen John F. 295 Essex.....	1302
Balcomb Edwin B. 228 Essex.....	1356	Cahill Edmund M. Beverly.....	787
Balcomb J. W. 47 Washington.....	1442	Cahill Timothy J. Peabody.....	1148
Baldwin E. S. Co. 289 Derby.....	front cover	Cahn & Grant Bill Posting Co. 250 1/2 Essex.....	1300
Banks E. K. Beverly.....	801	Caldwell Edgar J. Beverly.....	792
Barry John R., 2144 Essex.....	1365	Caldwell W. A. Beverly.....	778
Barry Printing Co. 144 Washington.....	1310	Callahan James F. Peabody.....	1161
Batchelder A. C. Danvers.....	907	Callely Peter F. Beverly.....	801
Batchelder Henry C. 39 Central and 72 Union.....	1365	Campbell H. H. Co. 42 Essex.....	1369
Batchelder S. H. Boston.....	1361	Campbell Robert, r. 17 Front.....	1384
Bay State Creamery Co. 75 North.....	1390	Canadian Fur Co. 228 Essex.....	1312
Bay State Dye House, 54 Lafayette.....	1308	Canney S. F. Ipswich.....	1259
Beckett C. L. Co. Peabody.....	1156	Cape Ann Savings Bank, Gloucester.....	1345
Belanger Leon, 8 Peabody.....	1390	Carleton George, Danvers.....	914
Bell Willis W. Danvers.....	914	Carney William & Son, 238 Bridge.....	1396
Bellew M. L. 19 Irving.....	532	Caron Magloire, 13 Endicott.....	1381
Bent Charles H. Beverly.....	802	Carrier Delia Mrs. 64 Essex.....	1305
Bergeron Albertine, 52 Lafayette.....	1318	Caskin & O'Connell, Danvers.....	909
Bernard F. W. & Co. Beverly.....	back cover	Central House, Peabody.....	1150
Bernier Arthur, r. 24 New Derby.....	60	Central Iron Foundry, 13 Dodge.....	1383
Bernier Desire, 45 1/2 Harbor.....	1396	Chadbourne Milton W. Ipswich.....	1258
Berry Tavern, Danvers.....	1330	Chagnon E. A. Mme. 51 Harbor.....	1386
Berry William A., Danvers.....	911	Chalfour James, 12 1/2 Glover.....	1309
Berube Alfred, 65 1/2 Harbor.....	1376	Chamberlain John B. 12 Beckford.....	1375
Bessom C. Florence, Marblehead.....	1009	Chamberlain W. H. Marblehead.....	1003
Beverly Chemical & Supply Co.....	foot lines	Chaplin William A. Ipswich.....	1264
Beverly Evening Times.....	806	Chapman Wm. T. Marblehead.....	1005
Beverly Exchange, Beverly.....	803	Chapple Wm. D. 81 Washington.....	1359
Beverly Farms Bakery & Lunch Room.....	808	Chaput Paul N. 39 Harbor.....	1353
Beverly Loan Co.....	foot lines	Chaput Paul N. 17 Congress.....	1377
Beverly Morning Citizen.....	806	Choate John H. 202 1/2 Essex.....	1396
Beverly National Bank.....	771	Choate W. E. jr. Beverly.....	530
Beverly Plumbing & Heating Co. Beverly.....	775	Christopher J. H. Ipswich.....	1285
Beverly Pottery.....	805	Cilley E. O. Mrs. 3 Orne sq.....	1328
Beverly Savings Bank.....	771	Clafin John H. Beverly.....	775
Beverly Spa, Beverly.....	793	Clafin W. H. & Co. Boston.....	front cover
Beverly Steam Laundry.....	803	Clapp William E. Danvers.....	902
Bissell C. A. 9 Summit ave.....	1367	Clapp & Tapley, Danvers.....	534
Bixby Louis H. Ipswich.....	1265	Clark A. B. Co. Peabody.....	532
Blackburn Joseph J. Peabody.....	1160	Clark Charles S. estate, 29 Peabody.....	1386
Blake E. L. Co. Danvers.....	917	Clarke E. 55 North.....	back cover
Blake John A. Ipswich.....	1284	Clarke Harry W. Beverly.....	796
Blatt Israel, Beverly.....	794	Clarke Philip E. Ipswich.....	1262
Bliss & Co., 20 1/2 Essex.....	1365	Clarke, Raymond & Coale, Boston.....	1443
Blouin Andre, 42 1/2 Ward.....	1391	Clinton George T. Beverly.....	778
Bly J. Franklin, Danvers.....	902	Coakley Dennis F. Beverly.....	800
Boston Mutual Life Ins. Co. 237 Essex.....	1353	Coffin Horace E. 17 Washington.....	1387
Bouchard O. 24 New Derby.....	1373	Colbert Bros. 51 Derby.....	1367
Boucher Ovide A. 73 Leach.....	1321	Cole Herbert C. Peabody.....	1159
Bowden T. J. & Son, Marblehead.....	1006	Cole John, Marblehead.....	foot lines
		Collins Mme. 228 Essex.....	1307

Page	Page		
Colonial House, 70-72 Washington.....	1316	Dunnels John M. Ipswich.....	1260
Commonwealth Glue Co. 38 Broadway, front cover		Dunnels Lorenzo, Danvers.....	916
Conant H. T. & Co. 133 1/2 Essex.....	1306	Dupray Wilbur E. Ipswich.....	1253
Condon & McAuliffe, 27 1/2 Bridge.....	1404	Duren C. M. & Co. 97 Washington.....	64
Conley Brainerd J. Ipswich.....	head lines	Dussault Samuel, 86 Lafayette.....	30
Conly & Hooper, Marblehead.....	foot lines	Dwyer M. E. 166 Bridge.....	1355
Connolly Bros. Beverly.....	785	Eagle Credit House, 195 Essex.....	1395
Connolly Richard, 98 Boston.....	1388	Edmands H. A. Mrs. Beverly.....	794
Connor John J. 53 Washington.....	1360	Edwards Wm. G. 64 Bridge.....	529
Consolidated Loan Co. 209 Essex.....	foot lines	Edwards & Co. 72 Federal.....	1320
Conway Francis L. Peabody.....	1157	Eklund Victor, 76 Lafayette.....	9
Cook-Vivian Co. Boston.....	1444	Eldridge & Cain, Beverly.....	788
Cook Richard M. Marblehead.....	1000	Elliott Charles H. Beverly.....	778
Cook William S. 15 Palmer.....	1383	Elwell Fredrick, 5 Burnside.....	1382
Coolidge William W. 125 Wash.....	1360	Essex Bookbindery, 223 Essex.....	1298
Coombs E. W. Peabody.....	1161	Essex Echo, Essex.....	1180
Cooper George, 5 Liberty.....	1378	Essex Engine Co. Lynn.....	1324
Coots School of Elocution, etc. 237 Essex.....	1302	Essex Glue Co. Peabody.....	front cover
Copp A. W. & Co. Beverly.....	531	Evans Forrest L. 118 Washington.....	1358
Corbett Patrick, Beverly.....	778	Excelsior Laundry Co. 227 Washington.....	16
Corson & Co. 26 1/2 Central.....	1308	Fairfield C. 78 Washington.....	1300
Cote Theodore, 43 Perkins.....	1387	Fairfield James, 52-60 Central.....	1320
Cotter Patrick, 25 Aborn.....	12	Fanning James, 28 Webb.....	1370
Cream of Chocolate Co. Danvers.....	1314	Farley J. Arthur, 34 Front.....	1388
Cressey J. H. 32 Front.....	60	Farrington George C. Peabody and Danvers.....	1330
Cronan & Buckley, 69 Union.....	1380	Fay Thomas, Danvers.....	1374
Crosby A. L. & Co. Beverly.....	788	Fellows Frank F. Peabody.....	1166
Crosby F. H. Beverly.....	788	Felton Wm. S. & Co., 259 Essex.....	1352
Crosby William H. Danvers.....	904	Ferguson A. P. Marblehead.....	1001
Cross Vose E. Peabody.....	1164	Ferguson Peter M. Danvers.....	913
Crowe John N. 17 Woodside.....	1374	First National Bank, Ipswich.....	1251
Crown Sporting Goods Co. Danvers.....	908	Fisk & Arnold, Boston.....	15
Crown Woven Wire Brush Co. 262 1/2 Wash.....	1364	Fitz Andrew, 256 1/2 Essex.....	1362
Culbert J. A. Beverly.....	799	Fitz Warren P. 2 Milk.....	1310
Curtis Charles E. & Son, 14 New Derby.....	15	Fitzgerald Wm. & Sons, 64 Boston.....	1380
Curtis & Lyons, Danvers.....	905	Fitzgibbon Thomas, Beverly.....	786
Daland Co. Inc. 215 Essex.....	1316	Flint Walter S. Beverly.....	773
Daley Jere F. & Co. 27 Congress.....	1299	Flynn C. J. Peabody.....	1334
Daley Wm. J. & Co. Peabody.....	1153	Ford A. S. & Co. 223 Essex.....	1353
Dalton J. Frank, 218 Essex.....	1352	Forness Arthur A. Beverly and Salem.....	770
Damon A. W. Danvers.....	903	Foster James E. & Son, Danvers.....	910
Dane-Smith Co. 277 Essex.....	1386	Fournier Eugene, r. 16 1/2 Harbor.....	1299
Dane, Smith & Co. Boston.....	1252	Fowler John C. Beverly.....	787
Danvers Bleachery & Dye Works, Peabody.....	1145	Frankland Marble and Granite Works, 213 Washington.....	1383
Danvers Fish Market.....	916	Freedman & Co. 56 Lafayette.....	19
Danvers Iron Works.....	909	Freeman Bros. 8 Bridge.....	1385
Danvers Mirror.....	917	Freeman W. J. Peabody.....	1153
Danvers National Bank.....	901	French's Creamery, Beverly.....	792
Danvers Savings Bank.....	901	Friburg & Co. Bridge c. Osgood.....	1369
Davenport E. W. Beverly.....	776	Full Jos. F. 21 Church.....	1397
Davis Joseph A. 52 Webb.....	59	Fuller & Bodwell, Danvers.....	902
Day E. F. & Co. Danvers.....	909	Fuller George W. 275 Essex.....	1311
Day Ralph A. Co. 245 Essex.....	1886	Gadbois A. J. Beverly.....	side lines
Day & Hoyt Co. 217 Essex and Peabody.....	1386	Gallivan P. H. Danvers.....	909
DeCoste E. 32 Endicott.....	1376	Galloupe Wm. Beverly.....	782
Dearborn Bros. & Co. Lynn.....	13	Gardner Sign Co. 291 Essex.....	1318
Delaney T. F. Beverly.....	698	Gates George W. Danvers.....	911
Delaney T. W. Peabody.....	1163	Gifford F. J. 271 Derby.....	1304
Dennis Chas. S. 81 Washington.....	1395	Gifford Nathan F. 338 Bridge.....	1336
Dennis Wm. D. 210 Essex.....	1356	Giguere George, 7 Leach.....	1316
Derby C. B. Peabody.....	1165	Giles Edmund, Beverly.....	foot lines
Derry Fred J. Danvers.....	903	Girdler John, Beverly.....	head lines
Derry William C. Peabody.....	1155	Gladding R. Smith, Beverly.....	774
Deschamps Benj. S. Beverly.....	786	Godsland George J. 256 Bridge.....	head lines
Devine T. A. Co. 1 Front.....	1446	Goldberg S. 77 Lafayette.....	61
Dexter Samuel R. Beverly.....	783	Goldman Bros. 4 Central.....	62
Dionne Louis, 21-23 Pingree.....	1391	Goldsmith A. F. & Co. 4 Barton sq.....	63
Dirigo Cream & Catering Co. Danvers.....	foot lines	Goodale P. C. Peabody.....	1155
Dirigo Creamery Co. Beverly.....	side lines	Goodell Zina, 48 Lafayette.....	1312
Doane Ernest S. Marblehead.....	1004	Goodhue F. T. Ipswich.....	1256
Doane Howard A. Beverly.....	782	Goodwin Dearborn J. Beverly.....	790
Dockham Reuben E. 73 Federal.....	1445	Goodwin E. E. Marblehead.....	1006
Dodge Charles L. Beverly.....	772	Goodwin J. P. Marblehead.....	1004
Dodge David L. 82 Lafayette.....	1368	Goodwin William, Marblehead.....	1833
Dodge Harry K. Ipswich.....	1265	Goss George S. Marblehead.....	1005
Doherty John J. Peabody.....	foot lines	Gould James N. 1 North.....	1310
Donkin J. M. & Son, Beverly.....	782	Gould & Cutler, Boston.....	1403
Donnell S. Howard, Peabody.....	1147	Gould's Furniture Store, 4 Front.....	1403
Donovan John H. 210 Essex.....	1300	Gourdeau Jules A. 215 Washington.....	1372
Donovan & Co. Marblehead.....	1004	Gove George A. Beverly.....	802
Doucet Joseph S. 39 Harbor.....	1363	Gove William H. 118 Washington.....	1358
Dow James B. Beverly.....	807	Graham D. M. Beverly.....	790
Downes Wm. H. 41 Walter.....	1403	Grant George D. 264 Bridge.....	1324
Doyle Edmund, Marblehead.....	foot lines	Grant Samuel, 13 Central.....	1368
Drake David R. Beverly.....	800	Grantham George F. 35 Church.....	1362
Driscoll & Co. 209 Wash. and Marblehead.....	1441		

Page	Page		
Graves James E. Marblehead.....	1002	Kolb Samuel, Danvers.....	912
Greenlaw Elec. Co. Beverly.....	802	Kotarski A. S. 173 Derby.....	1389
Gregory J. J. H. & Son, Marblehead.....	1332	Kotarski Bros. Ipswich.....	1256
Gross B. O. 60 Washington.....	10	Kravitz Henry, Beverly.....	16
Grosvenor D. P. Peabody.....	1334	Lacombe Nelson, 44 Ward.....	1368
Grove T. C. Marblehead.....	1333	Lambert H. D. Beverly.....	796
Grover John C. r. 31 Norman.....	1369	Lambertson Walter L. Marblehead.....	1006
Guilmet Arthur, 32 Congress.....	1391	Lamprey R. S. 31 Appleton.....	532
Gumbo Chemical Co. 14 Harbor.....	1304	Lane George W. & Son, 187 Derby.....	1367
Guppy L. A. Danvers.....	910	Lange Emil, Ipswich.....	1251
Hagar William C. Peabody.....	1148	Larivee Eugene & Co. 20 Congress.....	1400
Hallowell M. B. Peabody.....	1153	Larson Thomas L. Beverly.....	796
Hamblet & Hayes Co. Peabody.....	1149	Lathrop Wallace J. Ipswich.....	1256
Handy Kelley W. 73 1/2 North.....	16	Lawrence T. H. Beverly.....	530
Hanscom A. A. Beverly.....	788	Leach S. M. Beverly.....	front cover
Harlow & Baker, 3 Walnut.....	1375	Learnard & Shirley, Danvers.....	905
Harmony Grove Conservatories, 30 Grove.....	12	Lebrun Harry N. 229 Washington.....	1298
Harrigan J. J. Beverly.....	front cover	Lecraw William, Marblehead.....	1005
Harrington H. A. Peabody.....	1155	Lee Edward C. 73 Lafayette.....	62
Harris Charles E. 3 Winter.....	1319	Lee & Smith, 78 Washington.....	58
Harris H. 79 Harbor.....	61	Lefavour I. & Son, Beverly.....	773
Hartigan J. J. Horse Shoeing Establishment 184 Bridge.....	1385	Lefavour's Music Store, 166 and 168 Essex, and 2 St. Peter.....	foot lines
Hartnett Co. 171 and 171 1/2 Boston.....	1400	Lemay Ernest, Ipswich.....	1265
Haskell George, Ipswich.....	1262	Lewis Samuel A. 35 Lafayette.....	1391
Hathaway E. C. Beverly.....	804	Liberty Counter Co. 38-40 Winthrop.....	11
Hathaway G. R. Marblehead.....	1000	Liesch A. I. & Co. 7 Derby whf.....	1329
Hawthorne (The), Beverly.....	796	Lindsey N. B. Co. Marblehead.....	1332
Hay Edward W. 12 Forrester.....	head lines	Linehan James C. Peabody.....	1160
Hayes George H. W. Ipswich.....	1252	Litchman William T. Marblehead.....	1333
Hayes' Tavern, Ipswich.....	1255	Locke Frank E. 81 Washington.....	1363
Henderson W. Castella, Ipswich.....	1253	Locke M. P. & Son, 65 North.....	61
Henshaw John B. 28 Upham.....	1299	Locke Regulator Co. 76 North.....	back cover
Herrick F. W. 34 Norman.....	1314	Locke & Hart, Beverly.....	777
Hetu Charles, 12 New Derby.....	1401	Looney M. 11 Pope's ct.....	526
Hewitt Starr C. 158 Essex.....	back cover	Lord Daniel B. Peabody.....	1162
Hicks J. H. 153 North.....	1393	Lord & Neal, 58 North.....	1370
Hills Albert P. Co. Ipswich.....	1256	Lougee J. L. Co. 263 Essex.....	foot lines and 1318
Hilton Clarence, Danvers.....	905	Lover's Leap Spring Water Co. Lynn.....	head lines
Hinkley C. E. Peabody.....	1154	Lovett F. S. jr. Essex.....	1186
Holden Nathaniel J. 53 Washington.....	1363	Lovett Solon, Beverly.....	foot lines
Homans Amos, Beverly.....	781	Low Daniel & Co. 231 Essex.....	head lines
Hood H. P. & Sons, Lynn.....	back cover	Low Winthrop F. Beverly.....	798
Hooper William S. Peabody.....	1153	Lynch M. E. Peabody.....	1162
Hotel Central, Beverly.....	795	Lynn Granolithic & Construction Co. Lynn.....	13
Hotel Foster, Peabody.....	1150	Lynn Nellie F. Beverly.....	773
Hotel Washington, 150 and 167 Washington.....	1327	Lyons G. W. Beverly.....	782
Houghton F. E. Co. Beverly.....	770	MacDonald Dana J. Beverly.....	777
Howe's Express, Ipswich.....	1233	Mackenzie G. R. r. 21 Washington.....	1382
Howse T. W. Beverly.....	799	MacKenzie John, 5 City Hall ave.....	1385
Hudson Joseph F. 28 Congress.....	1390	McAdams F. J. Beverly.....	804
Hughes & Kingston, 317 Essex.....	1385	McCowan & Co. 273 Essex.....	1306
Humphrey B. B. Peabody.....	1152	McDonald C. W. Beverly.....	805
Ingersoll Frank A. Beverly.....	775	McDonald M. A. & Co. 84 Derby.....	1446
Ingraham J. F. & Co. Peabody.....	536	McDonald Walter T. 2 and 6 Walnut.....	1398
Innis Harry B. & Co. Beverly.....	803	McGlone J. J. Peabody.....	1154
Ipswich Chronicle.....	1263	McKinnon Charles H. Danvers.....	915
Ipswich Mills.....	1261	McKinnon Edward, 205 Washington.....	back cover
Ipswich Savings Bank.....	1251	McLane J. B. North Reading.....	foot lines
Irving Wm. A. 340 Bridge.....	15	McNeil W. A. Beverly.....	784
Jackson Express Co. Ipswich.....	1253	McRae L. K. & Son, Beverly.....	799
Jackson & Jackson, 81 Washington.....	1359	McSweeney P. A. & Co. 259 1/2 Essex.....	1354
Jackson & Tortat, Peabody.....	1151	McTernan Charles, Danvers.....	917
Jacobs J. H. Marblehead.....	1007	Maguire & Herrick, Beverly.....	798
Jacobs William A. Danvers.....	906	Mahoney Robert M. 114 Washington.....	1361
Jepson's Cafe, Beverly.....	794	Manassa V. M. 211 Washington.....	1325
Joly Alphonse M. 9 Everett.....	1373	Mangold Fred W. Danvers.....	916
Jones Geo. H. 119 Highland ave.....	1391	Manning E. A. Mrs. 17 Fairfield.....	1387
Jordan Fred H. Peabody.....	1166	Mansell William H. 79 Grove.....	1401
Joyce David, rear 26 Charter.....	1372	Maplewood Farm, Danvers.....	front cover
Keefe J. E. Peabody.....	1152	Marblehead Messenger.....	1009
Keegan Michael B. Marblehead.....	1001	Marblehead Savings Bank.....	999
Kelley C. M. & Son, 57 Loring ave.....	6	Marblehead Transportation Co.....	1000
Kelsey Harlan P. Higginson sq.....	1309	Marchand Elisee, 73 Lawrence.....	1369
Kerans Charles H. Danvers.....	904	Marshall & Moulton Express Co. Beverly.....	777
Kerans Charles P. Danvers.....	533	Marston Jacob, Danvers.....	914
Ketchum C. A. & Co. 2 Front.....	1388	Marston & Sturtevant, Beverly.....	791
Kierce Patrick P. Ipswich.....	1262	Martin B. F. Marblehead.....	1005
Killam J. F. Beverly.....	foot lines and side lines	Martin Benjamin F. 2d, Marblehead.....	1007
Kimball Bros. 10 New Derby and 70 Lafayette.....	1383	Martin Bros. Peabody.....	1153
Kimball I. 11 Hardy.....	1376	Martin John S. & Co. Marblehead.....	foot lines
King Joseph, 10 Glover.....	1380	Martin Thos. A. Peabody.....	1148
King Warren D. Peabody.....	1164	Martin William F. 63 to 67 Flint.....	525
Knapp S. Everett, Danvers.....	533	Mass. Adjustment and Investigation Bureau 209 Essex.....	foot lines
Knowlton Geo. H. Marblehead.....	1008	Maude F. C. Co. Beverly.....	head lines
Knowlton I. P. Peabody.....	1159		

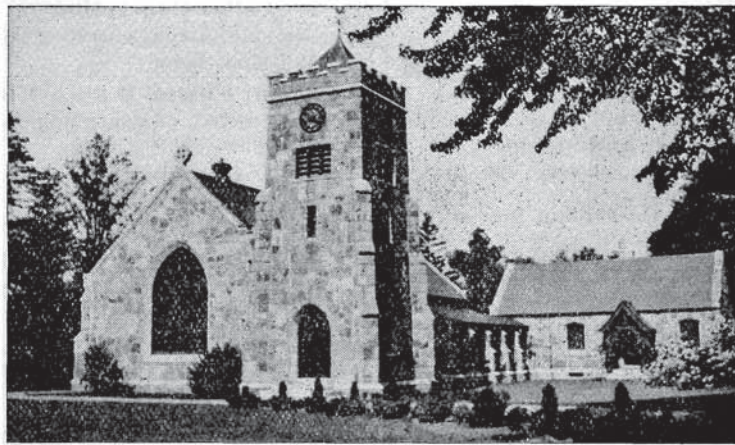
	Page		Page
May Fred W. Beverly.....	796	Palmer W. H. H. 247 Essex.....	1302
Mayberry J. A. Beverly.....	781	Paraskevas & Skarmountos, Peabody.....	1153
Mayes William & Co. Ipswich.....	1264	Paris Tailoring Co. 115 Essex.....	1395
Meagher John, Peabody.....	1156	Paris (The), 198 Essex.....	1300
Measures D. E. Ipswich.....	foot lines	Parker L. E. & Son, Beverly.....	798
Meek Henry M. Publishing Co. 60 Washing- ton.....	59	Parsons & Dalton, 186 Derby.....	1391
Menke Joseph B. Beverly.....	head lines	Patten Paul B. 78 Lafayette.....	1368
Mercantile National Bank, 225 Essex.....	1340	Patterson Wm. H. 41 Northend ave.....	1381
Merchants National Bank, 234 Essex.....	1341	Peabody Candy Co. Pea.....	side lines
Merrill A. H. Peabody.....	1145	Peabody Elisha B. Danvers.....	912
Merrill Elwood G. 256 1-2 Essex.....	64	Peabody George M. Danvers.....	911
Merritt William F. Marblehead.....	1010	Peabody Grain Co.....	1328
Metcalf Charles A. 39 Church.....	1355	Peabody Supply Co. Peabody.....	1163
Michaud Pierre, 73 Harbor.....	1394	Pearce Health Club, School.....	1324
Millard J. A. & Co. 184A Essex.....	1394	Pearce W. H. 152 Washington.....	1324
Miller's Market, 266 Essex.....	1298	Pearson C. A. 5 Front.....	1368
Mitchell L. M. Mrs. Beverly.....	797	Peck Geo. F. Mfg. Co. Beverly.....	foot lines
Mitchell & Ivers, 6 Dodge.....	526	Pedersen A. Beverly.....	798
Molan William J. 212 Bridge.....	1379	Peicott Samuel, 41 Harbor.....	1321
Moody Lewis B. (estate), 131 Washington.....	63	Pepper Co. Peabody.....	1151
Moore Benj. N. & Sons, Peabody.....	536	Perkins Arthur S. 13 and 15 Sewall.....	1322
Moore H. W. Beverly.....	790	Perkins Isaac E. B. Ipswich.....	1257
Morday William A. & Co. 122 Derby.....	19	Perley Edward L. 1 City Hall ave.....	1402
Morse Alonzo B. Beverly.....	787	Perley Sidney, 114 Washington.....	1358
Moulton George B. Danvers.....	912	Peterson J. N. & V. S. 237 Essex.....	1442
Moulton B. H. Beverly.....	784	Pettingell & Barry, Danvers.....	914
Munroe & Arnold-Merritt Express Co. 5 Nor- man and Peabody.....	back cover	Philbrick J. W. 56 Bridge and Beverly.....	1356 and 807
Munsey W. H. Danvers.....	906	Philinte Leon G. Beverly.....	801
Murney John M. Beverly.....	770	Phlippen Charles F. 19 St. Peter.....	head lines
Murphy James J. rear 8 1-2 Allen.....	1326	Pickett Coal Co. Beverly.....	foot lines
Murphy Patrick, Peabody.....	1158	Pike J. N. Co. 127 Washington.....	1313
Murray Bros. rear 11 Church.....	1314	Pincock Thomas G. 7 Dodge.....	2
Myers Haskell, Ipswich.....	side lines	Pitman Frank L. Peabody.....	1394
Nagel Fred A. Beverly.....	head lines	Pitman & Brown Co. 255 Derby and 9 and 11 Washington.....	side lines and 1371
National Coal Tar Co. Boston.....	back cover	Plotkin Bros. Beverly.....	808
National Grand Bank, Marblehead.....	999	Plummer Eugene O. Beverly.....	794
National Guard Band and Orchestra, 298 Washington.....	1395	Plummer W. F. Drug Co. Beverly.....	head lines
National Wool and Leather Co. Peabody.....	525	Poor N. H. Leather Co. Peabody.....	534
Naughton T. J. 46 Irving.....	529	Pope J. F. & Son, Beverly.....	779
Naumkeag Credit Co. 174 1-3 Essex.....	64	Porter Bros. 18 Osgood.....	1362
Naumkeag National Bank, 227 Essex.....	1342	Porter E. H. Co. Peabody.....	1165
Naumkeag Paper Co. r. 22 Central.....	1334	Porter J. V. & Co. Beverly.....	789
Naumkeag Steam Cotton Co. Salem.....	1350	Pratt George F. Marblehead.....	1008
Neal W. S. & Co. 232 Essex.....	1317	Prescott R. W. Danvers.....	976
Nelson J. S. & Son, 43 Bridge.....	63	Preston C. A. Beverly.....	776
New Eng. Tel. & Tel. Co. Boston.....	1351	Preston Levi, Peabody.....	1147
New Fountain Inn, Marblehead.....	1010	Prince George B. & Co. 85 Wash.....	14
New York Life Insur. Co. 252 Essex.....	1300	Purbeck & Porter, 213 Essex.....	1375
Newcomb & Gaus, 1 City Hall ave.....	opp. 466	Put's Sporting House, 76 Washington.....	1310
Newell & Knowlton Inc. Peabody.....	536	Putnam Bros. Peabody.....	1155
Newhall M. A. & Co. 20 1-2 Central.....	1320	Putnam Calvin Lumber Co. Danvers.....	903
Newmark Morris, 163 Essex.....	1394	Putnam Ralph B. 125 Washington.....	1359
Nichols Andrew, Danvers.....	1331	Putnam W. F. & Co. Boston.....	9
Nichols Louis L. Peabody.....	1160	Pyne & Smith, Peabody.....	side lines
Nichols Walter P. Marblehead.....	1006	Quill Dennis W. 118 Washington.....	1358
North Shore Breeze, Beverly.....	804	Quinlan J. J. & Co. 53 Washington.....	10
North Shore Market, 5 Central.....	1297	Quinn Joseph F. 118 Washington.....	1359
North Shore Plumbing and Heating Co. Bev- erly.....	775	Quint N. M. Peabody.....	1160
North Shore Toilet Parlors, Beverly.....	803	Raby Eustace, 23 Brown.....	1378
Norton B. K. Peabody.....	1163	Radford W. F. & Co. 159 Washington.....	64
Norwood Charles F. 271 Derby.....	1374	Rainville House, 260 Essex.....	1494
Ober Prince, Beverly.....	780	Ramsdell A. S. Marblehead.....	1007
Ober S. F. & Son, Beverly.....	781	Rand William H. Ipswich.....	1260
O'Brien D. J. r. 107 Boston.....	1401	Randall Arthur R. Danvers.....	905
O'Connell M. E. 9 North.....	1320	Ray & Murray, Peabody.....	1166
O'Connor C. M. 299 Essex.....	1304	Raymond & Battis, 81 Washington.....	1359
O'Dea George W. Beverly.....	790	Ready M. A. 60 North.....	1354
Odell Charles H. & Co. 62 Washington.....	405	Reed B. A. jr. 101 Washington.....	1384
Orus R. 31 Lafayette.....	1390	Regan Leather Co. Danvers.....	533
O'Keefe T. A. Co. Peabody.....	534	Reid Angus, Peabody.....	1168
O'Neil Eugene E. Danvers.....	907	Reith & Co. 204 Essex.....	1301
O'Neil William M. Danvers.....	918	Ricard & Raboin, 61 Congress.....	1324
O'Rourke Bros. 73 North.....	1398	Rice A. J. r. 186 North.....	528
Osborn Arthur G. 18 Peabody.....	526	Richardson Charles W. 71 Washington.....	1361
Osborne George, Beverly.....	1328	Richardson Ernest S. Danvers.....	903
O'Shea Thomas H. Peabody.....	536	Ricker Guy W. 251 Essex.....	1355
Ouellette A. 80 Harbor.....	62	Rielley T. H. Peabody.....	1149
Ouellette N. jr. 199 Washington.....	1393	Robb Malcolm E. 228 Essex.....	1444
Page George G. Box Co. Cambridgeport.....	527	Robertson Robert Co. Beverly.....	774
Page & Counter Co. 5 and 7 Dodge st. ct.....	11	Roger Conant Co-op. Bank, 39 Church.....	1362
Page & Gilman, 43 Front.....	1444	Rogers Edward L. 410 Essex.....	1364
Palmer Robert L. Marblehead.....	1010	Rogers Walter P. 209 Essex.....	1328
		Rolfe J. Frank, Beverly.....	797
		Rollins F. A. Peabody.....	1148

	Page		Page
Rollins Wm. H. 228 Essex.....	1361	Stanyan E. E. Danvers.....	906
Ronix Philip H. Peabody.....	1158	Staten A. M. 35 Central.....	1375
Roope & Morrison, 16 Sewall.....	1372	Stearns E. A. r. 20 Pickman.....	1370
Ropes Bros, 49-55 Central.....	opp. 821	Stickney J. Frank, 7 High J. P.....	1404
Roscoe & Steele, Marblehead.....	1007	Stockwell H. E. Peabody.....	1157
Ryan Garrett, 285 Bridge.....	1378	Stone Chas. E. Peabody.....	1145
Ryan John F. Marblehead.....	1001	Stone Express Co. Salem and Beverly.....	776
Salem Carpet Cleaning Co. 215 Wash. foot lines		Stone Samuel H. Beverly.....	772
Salem Carriage Works, 411 Bridge.....	1379	Stopford Wm. & Co. Beverly.....	808
Salem Chemical & Supply Co. 2 Walter.....	525	Story Edward, Essex.....	1186
Salem Coal Co. 235 Derby.....	1366	Sullivan E. Mark, Beverly.....	1357
Salem Commercial School, 126 Washington.....	13	Sullivan E. F. Beverly.....	797
Salem Electric Lighting Co. 114 Wash.....	1349	Sullivan John, Danvers.....	912
Salem Elevator Works.....	3	Sullivan Owen P. 31 1/2 Front.....	1400
Salem Evening News, 122 Washington.....	1357	Sullivan & Devine, 252 Essex.....	1360
Salem Five Cents Savings Bank, 210 Essex.....	1344	Swan George, Beverly.....	773
Salem Gas Light Co. 87 Washington.....	1346	Sweeney Edward J. 16 Dodge.....	16
Salem Hat and Bonnet Bleachery, 263 Essex.....	138	Sweeney P. H. 107 Boston.....	1384
Salem Iron Foundry, 235 Derby.....	8	Swift John B. Beverly.....	792
Salem Kindling Wood Co. 340 Bridge.....	15	Taffe House, 17-21 Derby sq.....	1393
Salem Laundry, 3 Front.....	1384	Tapley C. R. & Co. Danvers.....	1330
Salem Mutual Fire Ins. Co. 43 Church.....	1347	Tardif Pierre, 16 Read.....	12
Salem National Bank, 114 Washington.....	1343	Tarr William T. Ipswich.....	1260
Salem Plating and Polishing Works, 8 1/2 Dodge		Tetrault Louis R. 227 1/2 Derby.....	1376
.....	1354	Thomas Thomas P. Newburyport.....	1260
Salem Press Co. 4 Central.....	14	Thornquist G. A. 175 Essex.....	head lines
Salem Safe Deposit & Trust Co. 210 Essex.....	1339	Thornton R. J. & Co. 23 Derby sq.....	1446
Salem Savings Bank, 125 Washington front cover		Thurston S. H. Ipswich.....	1257
Salem Skating Rink, 41 North.....	1297	Tobin C. T. & Co. 40 Norman.....	1400
Salem Steam Boiler Works, 186 Bridge.....	1401	Todd & Smith, Beverly.....	772
Salem Storage Warehouse Co. 295 Bridge.....	1348	Tompkins Coles F. 77 Washington.....	15
Salem Waste Co. 2 Walter.....	525	Tougas & Tougas, Ipswich.....	1258
Salem & Beverly Ice Co. 31 Bridge.....	1392	Tourangean J. C. & Son, 90 Harbor.....	1394
Salkins & Laskey, Marblehead.....	1009	Tozer Arthur H. Ipswich.....	1263
Samson Mary M. L. Peabody.....	1150	Tracy Henry J. 131 Essex.....	1388
Sanders R. M. Beverly.....	795	Trask Albert W. Danvers.....	909
Sargent Fred C. 19 Crombie.....	1381	Trask J. Arthur, Peabody.....	1164
Saunders Arthur L. 228 Essex.....	1352	Trask J. W. & Co. Peabody.....	1152
Saunders John J. 11 Brown.....	1398	Trask Roofing Co. 206 Bridge.....	1312
Sawyer Elbridge C. Beverly.....	769	Trefry B. W. Marblehead.....	1332
Sawyer Wm. F. Peabody.....	1335	Trefry C. C. Beverly.....	789
Sayward C. A. Ipswich.....	1252	Trefry Wm. D. T. Marblehead.....	981
Security Safe Deposit & Trust Co. Lynn.....	11	Trow James H. 4 St. Peter.....	foot lines
Schlehuber Andrew, Lynn.....	30	Tucker James A. Ipswich.....	1257
Scranton Stewart, 220 Highland ave.....	1393	Turner Edward F. 64 Prospect.....	1363
Sears George B. Danvers and Salem.....	1357	Turner Tanning Machinery Co. Peabody.....	535
Shattuck Herbert W. Beverly.....	793	Tuttle E. N. & Co. Beverly.....	805
Shaughnessy & Griffin, 55 Washington, head lines		Tuttie Frederick H. Beverly.....	773
Shea William A. Peabody.....	1151	Tweed Carriage Works, Peabody.....	1157
Sheedy John H. 71 Washington.....	1360	Twentieth Century Plant Food Co. Beverly.....	777
Shepard Chas. H. Peabody.....	1147	Tynan E. S. Heel Co. r. 31 Boston.....	11
Shepard H. P. Beverly.....	797	Union Leather Measuring Co. Danvers.....	533
Shepard S. D. & Co. 173 Essex.....	13	Upton George L. 5 Walnut.....	1373
Shepard Wm. H. Marblehead.....	1333	Upton S. W. 143 Washington.....	62
Sherry M. & Co. Peabody.....	534	Varney F. W. Beverly.....	805
Shortell M. & Son, 10 Dodge.....	1445	Vincent Frank, Marblehead.....	1008
Sim Arthur W. 71 Washington.....	1362	Vogel George W. 212 and 214 Bridge.....	1379
Sim F. & Sons, 40 Beaver.....	526	Wadleigh & Morse, 81 North.....	14
Simmons B. J. 29 Mason.....	head lines	Walcott J. G. Jr. Co. Peabody.....	1147
Singer Mfg. Co. 138 1/2 Essex.....	1384	Walke William T. Loring ave.....	1364
Smallie Wm. F. Beverly.....	791	Walker George H. & Co. Boston.....	1443
Smith Alonzo H. 17 Canal.....	5	Walker S. A. Mrs. Danvers.....	904
Smith Arthur F. 16 Hazel.....	1374	Wallis H. B. & Son, Beverly.....	784
Smith Frank E. 159 Essex.....	1399	Walton C. E. 43 Central.....	1355
Smith Franklin, Beverly.....	791	Walton Eben N. 43 Central.....	1355
Smith George A. Danvers.....	915	Walton L. B. Peabody.....	1165
Smith Ira A. Beverly.....	530	Ward Harvey E. 90 North.....	1364
Smith Joseph F. Essex.....	1186	Ward J. M. & Co. Peabody.....	1156
Smith Purvis F. Peabody.....	1164	Warner Frederick E. 209 Essex.....	foot lines
Smith Wm. Beverly.....	793	Warner, Wheeler & Co. 209 Essex.....	foot lines
Smith Winchester, 197 Derby.....	front cover	Warren Five Cents Savings Bank, Peabody.....	1146
Soar Wm. H. Ipswich.....	1258	Warren James A. Peabody.....	1166
Soboczinski F. A. 36 Webb.....	1366	Warren National Bank, Peabody.....	1146
Sokol N. 99 Derby.....	1392	Washington Spa, 216 Essex.....	60
So. Danvers Mut. Fire Ins. Co. Peabody.....	1145	Waters Andrew S. 7 Franklin.....	1365
South Salem Pharmacy, Palmer c. Perkins.....	1354	Waters & Brown, 69 Washington.....	1303
Southwick L. B. Co. Peabody.....	535	Watkins G. F. & Son, Peabody.....	1151
Southworth Bros. Beverly.....	1306	Webb A. N. & Co. 203 1/2 Washington.....	1396
Spaulding W. & G. E. Peabody.....	1159	Webb Ernest S. Danvers.....	915
Spencer A. H. Boston.....	1443	Webb W. Arthur, Danvers.....	913
Spencer Robert, Ipswich.....	1258	Webber Wm. G. Co. 240 Essex.....	4
Spiller Charles, Ipswich.....	1257	Welch James J. & Co. 14 Bridge.....	opp. 820
Spiller E. P. Beverly.....	791	Wells J. B. Beverly.....	801
Sprague, Breed & Brown, Beverly		Wells Roy C. 53 Washington.....	1353
.....		Wenham Lake Ice Co. 20 March.....	1392
.....		Whelton D. G. Co. 307 Essex.....	1389
Stanley Andrew, Beverly.....	780		



INDEX TO ADVERTISERS.

Page	Page
Whidden A. H. & Son, Peabody... ..1163	Winslow Herbert F. Beverly.....717
Whipple G. Willis & Co. 184 Essex.....1306	Winter Club, 9 Higginson sq....1316
Whipple Orrin E. Beverly.....792	Witch City Bottling Works, 4 Sewall.....1447
Whitaker's Orchestra, Beverly.....1330	Witherell Warren F. Co. Boston.....opp. 75
Whitcomb, Carter Co. Beverly..... foot lines	Wodarski Simon J. 40 Peabody.....1390
Whitcomb H. C. & Co. Boston.....1443	Woelfel Ernest A. Peabody.....535
White Alden P. 256½ Essex.....1361	Wood J. Elmer, Beverly.....head lines
White C. E. Marblehead.....1008	Wood W. L. Beverly..... foot lines
White Samuel P. Boston and Beverly.....1362	Woodberry Milk Co. Beverly....793
White & Co. Marblehead.....1001	Woodbury Albert K. 58 Howard.....60
Whittemore G. W. 240 Bridge.....1387	Woodbury N. F. Beverly.....772
Whittier James, Beverly.....807	Woodman E. & C. Danvers.....869
Whittier Joseph M. Danvers.....910	Woods Patrick J. & C. Peabody.....1083
Williams H. J. 12 and 15 Hanson.....1367	Woodward D. E. Danvers....902
Wilson J. T. & Son, Beverly and Nahant.....784	Wright Harry G. 200½ Essex.....1308
Wilson J. Colby, Beverly and Nahant.....789	Wyman & Son, Peabody.....1158
Wineapple Bros. 133 Washington.....1312	Zubal & Wapenski, 242 Derby.....1390



CHAPEL AT HARMONY GROVE CEMETERY.

## Index to Advertisers in Boston, Lynn, Etc.

<b>Aerated Water (Syphons)</b>	
Lover's Leap Spring Water Co., 17 Forest, Lynn, . . .	<i>head lines</i>
<b>Ale, Lager and Porter</b>	
Witherell Warren F. Co. 91 Causeway, Boston . . .	opp. 75
<b>Artificial Arms.</b>	
Fisk & Arnold, 3 Boylston pl. Boston . . .	15
<b>Artificial Legs</b>	
Fisk & Arnold, 3 Boylston pl., Boston . . .	15
<b>Asphalt Materials</b>	
National Coal Tar Co. 297 Franklin, Boston . . .	<i>back cover</i>
<b>Atlases</b>	
Walker George H. & Co. 221 High, Boston . . .	1443
<b>Baker</b>	
Schlehuber Andrew, 78 Exchange, Lynn . . .	30
<b>Bankers</b>	
Putnam Webster F. & Co. 50 Congress, Boston . . .	9
<b>Banks</b>	
Cape Ann Savings Bank, 109 Main, Gloucester . . .	1345
Security Safe Deposit & Trust Co. 345 Union, Lynn . . .	11
<b>Bonds and Stocks</b>	
American Loan and Trust Co. 53 State, Boston . . .	opp. 74
Dane, Smith & Co. 53 State, Boston	1252
<b>Bookbinders</b>	
Adams Ephraim & Co. 289 Congress, Boston . . .	1442
<b>Bottlers</b>	
Lover's Leap Spring Water Co. 17 Forest, Lynn . . .	<i>head lines.</i>
<b>Box Manufacturers</b>	
Page Geo. G. Box Co. 1 to 13 Hampshire, Cambridgeport . . .	527
<b>Box Printers</b>	
Page Geo. G. Box Co. 1 to 13 Hampshire, Cambridgeport . . .	527
<b>Box Shooks</b>	
Page Geo. G. Box Co. 1 to 13 Hampshire, Cambridgeport . . .	527
<b>Brokers</b>	
Dane, Smith & Co. 53 State, Boston,	1252
Putnam Webster F. & Co. 50 Congress, Boston . . .	9
<b>Brush Mnfrs. and Dealers</b>	
Gould & Cutler (inc.), 105 North, Boston . . .	1403
<b>Building Paper</b>	
National Coal Tar Co. 297 Franklin, Boston . . .	<i>back cover</i>
<b>Butter Dealers</b>	
Hood H. P. & Sons, 193 Alley, Lynn	<i>back cover</i>
<b>Butter, Cheese, Etc.</b>	
Witherell Warren F. Co. 91 Causeway, Boston. . .	opp. 75
<b>Carbonated Beverages</b>	
Lover's Leap Spring Water Co. 17 Forest, Lynn . . .	<i>head lines</i>
<b>Cards and Cardboard</b>	
Cook-Vivian Co. 187 Congress, Boston . . .	1444
<b>Caterer</b>	
Schlehuber Andrew, 78 Exchange, Lynn . . .	30
<b>Cellar Concreting</b>	
Lynn Granolithic and Concreting Co. 459 Union, Lynn . . .	13
<b>Cement Floors, Walks, Etc.</b>	
Lynn Granolithic and Concreting Co. 459 Union, Lynn . . .	13
<b>Champagnes</b>	
Witherell Warren F. Co. 91 Causeway, Boston . . .	opp. 75
<b>Clothing Cleansed and Repaired</b>	
Kravitz Henry, 174 Rantoul, Beverly	16
<b>Coal Tar</b>	
National Coal Tar Co 297 Franklin, Boston . . .	<i>back cover</i>
<b>Coal Tar Products</b>	
National Coal Tar Co. 297 Franklin, Boston . . .	<i>back cover</i>
<b>Colors, Paints, Etc.</b>	
Gould & Cutler (inc.), 105 North, Boston . . .	1403
<b>Columns and Posts</b>	
The Brockway-Smith Corp. 15-18 Washington (north), Boston, and 117 Pleasant, Lynn . . .	7
<b>Concrete Floors, Walks, Etc.</b>	
Lynn Granolithic and Concreting Co. 459 Union, Lynn . . .	13

**Contractors and Builders**

Lynn Granolithic and Concrete Co.  
459 Union, Lynn . . . . 13

**Cream and Milk**

Hood H. P. & Sons, 193 Alley,  
Lynn . . . . *back cover*

**Custom Tailors**

Kravitz Henry, 174 Rantoul, Beverly 16

**Disinfectants**

National Coal Tar Co., 297 Franklin,  
Boston . . . . *back cover*

**Doors, Sash and Blinds**

The Brockway-Smith Corp. 15-18  
Washington (north) Boston, and  
117 Pleasant, Lynn . . . . 7

**Driveways, Sidewalks etc.  
(concrete)**

Lynn Granolithic & Concrete Co.  
459 Union, Lynn . . . . 13

**Electrotypers and Stereotypers**

Whitcomb H. C. & Co. 42 Arch,  
Boston . . . . 1443

**Engravers**

Walker George H. & Co. 221 High,  
Boston . . . . 1443

**Envelope Mfrs.**

Cook-Vivian Co., 187 Congress, Bos-  
ton . . . . 1444

**Express**

Jackson Express Co. 32 Court sq.,  
Boston . . . . 1253

**Galvanized Iron Pipe**

Braman, Dow & Co. 239-245 Cause-  
way, Boston . . . . opp. 820

**Gas Pipe Manufacturers**

Braman, Dow & Co. 239-245 Cause-  
way, Boston . . . . opp. 820

**Gas and Gasolene Engines**

Essex Engine Co. 416 Union, Lynn 1324

**Gelatine Manufacturers**

Commonwealth Glue Co. 655-657 At-  
lantic ave., Boston *front cover*

**Glue Manufacturers**

Commonwealth Glue Co., 655-657 At-  
lantic ave., Boston *front cover*

**Glue Stock**

Commonwealth Glue Co., 655-657  
Atlantic ave., Boston *front cover*

**Gravel (Roofing)**

National Coal Tar Co. 297 Franklin,  
Boston . . . . *back cover*

**Groceries**

Witherell Warren F. Co. 91 Cause-  
way, Boston . . . . opp. 75

**Injectors**

Braman, Dow & Co. 239-245 Cause-  
way, Boston . . . . opp. 820

**Insurance and Real Estate**

Brown A. S. Jr. 85 Water, Boston 1370  
Stone Charles E. 71 Kilby, Boston 1145  
Tapley C. R. & Co. 31 Milk, Boston 1330

**Investments**

Putnam Webster F. & Co. 50 Con-  
gress, Boston . . . . 9

**Iron Pipe**

Braman, Dow & Co. 239-245 Cause-  
way, Boston . . . . opp. 820

**Justices of the Peace**

Clapp William E. 60 State, Boston 902  
Tapley C. Ralph, 31 Milk, Boston 1330

**Kalsomine (Muresco)**

Gould & Cutler (incorp.) 105 North  
Boston . . . . 1403

**Kindling Wood**

Page Geo. G. Box Co. 1 to 13 Hamp-  
shire, Cambridgeport . . . 527

**Kola-Rays**

Lover's Leap Spring Water Co. 17  
Forest, Lynn . . . . *head lines*

**Lager Beer**

Witherell Warren F. Co. 91 Cause-  
way, Boston . . . . opp. 75

**Lawyers**

Batchelder Samuel H. 16 State, Bos-  
ton . . . . 1361  
Clapp William E. 60 State, Boston 902

**Lawyers (Patent)**

Clarke, Raymond & Coale, 60 State,  
Boston . . . . 1443

**Limbs (artificial)**

Fisk & Arnold, 3 Boylston pl. Bos-  
ton . . . . 15

**Lithographers**

Walker George H. & Co. 221 High,  
Boston . . . . 1443

**Lock Corner Boxes**

Page Geo. G. Box Co. 1 to 13 Hamp-  
shire, Cambridgeport . . . 527

**Machinists**

Essex Engine Co. 416 Union, Lynn 1324

**Malt**

Witherell Warren F. Co. 91 Cause-  
way, Boston . . . . opp. 75

# SAM DUSSAULT

Machinist, Millwright, Plumber,  
Gas Fitter, Expert in Repairing

Shop and Residence, 86 Lafayette Street, Salem, Mass.

## Andrew Schlehuber, BAKER, CATERER, CONFECTIONER

ALL KINDS OF CATERING IN FIRST CLASS STYLE. Special prices to Churches and  
Large Parties of all kinds. Orders by Telephone promptly attended to

No. 78 Exchange Street, Lynn, Massachusetts

<p><b>Mantels and Medicine Cabinets</b> The Brockway Smith Corp. 15-18 Washington (north), Boston and 117 Pleasant, Lynn . . . 7</p> <p><b>Manufacturing Co.</b> Gould &amp; Cutler (inc.) 105 North, Boston . . . 1403</p> <p><b>Map Publishers</b> Walker Geo. H. &amp; Co. 221 High, Boston . . . 1443</p> <p><b>Milk Dealers</b> Hood H. P. &amp; Sons, 193 Alley, Lynn <i>back cover</i></p> <p><b>Mortgages</b> Tapley C. R. &amp; Co. 31 Milk, Boston 1330</p> <p><b>Mouldings and Turned Work</b> The Brockway-Smith Corp. 15-18 Washington (north) Boston, and 117 Pleasant, Lynn . . . 7</p> <p><b>"Muresco" Wall Finish</b> Gould &amp; Cutler (inc.) 105 North, Bos- ton . . . 1403</p> <p><b>Natural Carbonated Gas</b> Lover's Leap Spring Water Co., 17 Forest, Lynn . . . <i>head lines</i></p> <p><b>Notaries Public</b> Clapp William E., 60 State, Boston 902</p> <p><b>Packing Box Shooks</b> Page Geo. G. Box Co. 1 to 13 Hamp- shire, Cambridgeport . . . 527</p>	<p><b>Packing Boxes</b> Page Geo. G. Box Co. 1 to 13 Hamp- shire, Cambridgeport . . . 527</p> <p><b>Paints, Oils and Glass</b> Gould and Cutler (inc.), 105 North, Boston . . . 1403</p> <p><b>Paper</b> Clafin W. H. &amp; Co. 562 Atlantic ave., Boston . . . <i>front cover</i> Cook-Vivian Co. 187 Congress, Bos- ton . . . 1444</p> <p><b>Paper Box Boards</b> Brown C. D. &amp; Co. 156 Congress, Boston . . . 1445</p> <p><b>Paper Warehouses</b> Brown C. D. &amp; Co. 156 Congress, Bos- ton . . . 1445 Clafin W. H. &amp; Co. 562 Atlantic ave., Boston . . . <i>front cover</i> Cook-Vivian Co. 187 Congress, Bos- ton . . . 1444</p> <p><b>Patent, Copyright and Trade Mark Law</b> Clarke, Raymond &amp; Coale, 60 State, Boston . . . 1443</p> <p><b>Patent Solicitors and Experts</b> Clarke, Raymond &amp; Coale, 60 State, Boston . . . 1443 Spencer A. H. 53 State, Boston . 1443</p> <p><b>Pitch (coal tar)</b> National Coal Tar Co. 297 Franklin, Boston . . . <i>back cover</i></p>
---	---

**Printers**

Walker George H. & Co. 221 High,  
Boston . . . . . 1443

**Printers (Wood)**

Page Geo. G. Box Co. 1 to 13 Hamp-  
shire, Cambridgeport . . . 527

**Printers' Inking Rollers**

Osgood J. H. Co. 100 Milk, Boston

**Publishers**

Walker Geo. H. & Co. 221 High,  
Boston . . . . . 1344

**Real Estate**

Brown A. S. Jr. 85 Water, Boston 1370  
Stone Charles E. 71 Kilby, Boston 1145  
Tapley C. R. & Co. 31 Milk, Boston 1330

**Road Maps**

Walker Geo. H. & Co. 221 High,  
Boston . . . . . 1443

**Roofing and Paving Materials**

National Coal Tar Co. 297 Franklin,  
Boston . . . . . *back cover*

**Savings Bank**

Cape Ann Savings Bank, 109 Main,  
Gloucester . . . . . 1345

**Shingle Stains**

National Coal Tar Co. 297 Franklin,  
Boston . . . . . *back cover*

**Shoe Box Shooks**

Page Geo. G. Box Co. 1 to 13 Hamp-  
shire, Cambridgeport . . . 527

**Shooks**

Page Geo. G. Box Co. 1 to 13 Hamp-  
shire, Cambridgeport . . . 527

**Slate**

National Coal Tar Co. 297 Franklin,  
Boston . . . . . *back cover*

**Solicitors of Patents**

Clarke, Raymond & Coale, 60 State,  
Boston . . . . . 1443  
Spencer A. H. 53 State, Boston . 1443

**Spring Water**

Lover's Leap Spring Water Co. 17  
Forest, Lynn . . . . . *head lines*

**Spring Water Soda**

Lover's Leap Spring Water Co. 17  
Forest, Lynn . . . . . *head lines*

**Steam Fitters**

Braman, Dow & Co. 239-245 Cause-  
way, Boston . . . . . opp. 820

**Steam, Gas and Water Pipe**

Braman, Dow & Co. 239-245 Cause-  
way, Boston . . . . . opp. 820

**Steam Heating Apparatus**

Braman, Dow & Co. 239-245 Cause-  
way, Boston . . . . . opp. 820

**Steam and Water Guages**

Braman, Dow & Co., 239-245 Cause-  
way, Boston . . . . . opp. 820

**Stocks and Bonds**

American Loan and Trust Co. 53  
State, Boston . . . . . opp. 74  
Dane, Smith & Co 53 State, Boston, 1252

**Straw Boards**

Brown C. D. & Co. 156 Congress,  
Boston . . . . . 1445

**Tailors**

Kravitz Henry, 174 Rantoul, Beverly 16

**Telephones**

New England Telephone and Tele-  
graph Co. 101 Milk, Boston . 1351

**Trust Companies**

American Loan and Trust Co. 53  
State, Boston . . . . . opp. 74  
Security Safe Deposit & Trust Co.  
345 Union, Lynn . . . . . 11

**Valves**

Braman, Dow & Co. 239-245 Cause-  
way, Boston . . . . . opp. 820

**Varnishes and Japans**

Gould & Cutler (inc.), 105 North,  
Boston . . . . . 1403

**Wagon Manufacturer**

McLane J. B. No. Reading *foot lines*

**Water Proofing Materials.**

National Coal Tar Co. 297 Franklin,  
Boston . . . . . *back cover*

**Wines and Liquors**

Witherell Warren F. Co. 91 Causeway, Boston . . . . . opp. 75

**Wood Preservatives.**

National Coal Tar Co. 297 Franklin, Boston . . . . . *back cover*

**Wood Printers**

Page Geo. G. Box Co. 1 to 13 Hampshire, Cambridgeport . . . . . 527

**Wooden Boxes**

Page Geo. G. Box Co. 1 to 13 Hampshire, Cambridgeport . . . . . 725

**LEGAL HOLIDAYS.**

Washington's Birthday, February 22d; Patriot's Day, April 19; Memorial Day, May 30th; Independence Day, July 4th; Labor Day, first Monday in September; Thanksgiving Day; Christmas Day. When the 22d of February, the 19th of April, the 30th of May, the 4th of July, or Christmas Day falls upon Sunday, the following Monday is a legal holiday.

**POPULATION OF SALEM & VICINITY FROM 1776 TO 1905**

Census.	Salem Inc. 1629.	Beverly Inc. 1668.	Danvers Inc. 1752.	Marbleh'd Inc. 1649.	Peabody Inc. 1855.	Wenham Inc. 1643.	Total.
1776 . . . .	5,337	2,754	2,284	4,386		638	15,399
1790 . . . .	7,921	3,290	2,425	5,661		502	19,799
1800 . . . .	9,457	3,881	2,643	5,211		476	21,668
1810 . . . .	12,613	4,608	3,127	5,900		554	26,802
1820 . . . .	12,731	4,283	3,646	5,630		572	26,862
1830 . . . .	13,895	4,073	4,228	5,149		611	27,956
1840 . . . .	15,082	4,689	5,020	5,575		689	31,055
1850 . . . .	20,264	5,376	8,109	6,167		977	40,893
1855 . . . .	20,934	5,944	4,000	6,928	5,348	1,073	44,227
1860 . . . .	22,252	6,154	5,110	7,646	6,549	1,105	48,816
1865 . . . .	21,189	5,942	5,144	7,308	6,051	918	46,552
1870 . . . .	24,117	6,507	5,600	7,703	7,343	985	52,255
1875 . . . .	25,958	7,271	6,024	7,677	8,066	911	55,907
1880 . . . .	27,563	8,456	6,598	7,467	9,028	889	60,001
1885 . . . .	28,090	9,186	7,061	7,517	9,530	871	62,255
1890 . . . .	30,801	10,821	7,454	8,202	10,158	886	68,322
1895 . . . .	34,473	11,806	8,181	7,671	10,507	886	73,524
1900 . . . .	35,956	13,884	8,542	7,582	11,523	847	78,334
1905 . . . .	37,627	15,223	9,063	7,209	13,098	924	83,144

## Removals, Additions, etc., received too late for regular insertion

### SALEM.

Babbidge William W. salesman (127 Tremont, B.), rem. to 28 Cabot

Bennett Orin F. supt. Naumkeag Mills  
**BERNIER ARTHUR**, carpenter and wheelwright, r. 24 New Derby, h. 36 Prince. *See page 60*

Beyloni George A. grocer, 87 Derby, b. 68 do. [Boston]

Bowen Abbie B. wid. Joshua L. h. 113 Joshua L. died Aug. 8, 1906

Browning John P. jr. h. 418 Lafayette

Buxton Abigail J. wid. Augustus J. died July 24, 1906 [do.]

Caliga Isaac H. artist, 142 Federal, h. Chute Ira M. o. b. at 280 Essex

**CLARKE EDWARD**, horse shoer, 55 North, h. 14 Lemon. *See back cover*

Cole Horace L. rem. to 18 Orchard

**CONDON & McAULIFFE** (John J. Condon and John J. McAuliffe), liquor dealers, 27 1-2 to 29 1-2 Bridge. *See page 1404*

Cummings Honora, wid. John, h. 103 Mason

John, died Aug. 3, 1906.

Doyle John J. died July 4, 1906

Evitts Hannah F. wid. John S. h. 6 Pierce ave.

John S. died Aug. 7, 1906

**EXCELSIOR LAUNDRY CO.** 227 Washington. *See page 16*

Gage Andrew, died July 28, 1906

Gardiner Harriet S. wid. Nathaniel H. rem. to 28 Cabot

Getchell Eliza A. wid. Benjamin, died July 29, 1906

Gogan Donald C. foreman carpenter, h. 12 Winter

**GOLDBERG SIMON**, wholesale confectioner and tobacconist, 77 Lafayette. *See page 61*

**HANDY KELLEY W.** carpenter and contractor, r. 73 1-2 North, h. 163 do. *See page 16* [Derby]

Hayes Catherine, wid. Patrick, h. 50 Patrick, died July 4, 1906

Hicks James H. out of business [b. do.]

Holt Charles H. intern, Salem Hospital, Kelley James, died Aug. 18, 1906

Kiernan Catherine, wid. O. Eugene, died Aug. 12, 1906

Layton Henry G. died Aug. 25, 1906.

**LEBLANC WILLIAM**, physician, 12 Winter, b. do. Office hours, 8 to 9 A. M., 2 to 3 and 7 to 8 P. M.

Leduc Almeda, wid. Egesippe E. h. 35 1-2 North

Egesippe E. died Aug. 2, 1906

**LENDALL & HICKS** (Charles H. Lendall and Ambrose A. Hicks), grocers, 151 and 153 North. *See page 1393*

**LOCKE FBANK E.** insurance and real estate, 81 Washington, rm. 6, h. 31 Dearborn. *See page 1363*

McCarthy Mary, wid. Patrick J. h. 125 Boston

Patrick J. died July 23, 1906

**MORDAY WILLIAM A. & CO.** (William A. Morday and Richard J. Hassem), grocers, 122 Derby. *See page 19* [Derby]

William A. & Co. discontinued at 87 Moulton Emily F. died Aug. 10, 1906

Mullin Mary, wid. Patrick, h. 3 Prospect Patrick, died Aug. 6, 1906

Newman Katherine M. died Aug. 8, 1906.

O'Rouleau John, shoemaker, h. 37 Mason

Riley Bridget, wid. Daniel, h. 8 Carlton Daniel, died July 27, 1906

Sadler Charles J. rem. to Danvers

Saul James B. died Aug. 7, 1906

Martha E. wid. James B. b. 26 Boston

Shepard Louisa A. wid. Warren S. died Aug. 16, 1906

Street John T. bookkeeper, 16 Front, h. 14 Leach [17, 1906]

Tibbetts Mary A. wid. Eben, died Aug. Tyler Frank, died Aug. 8, 1906

Lila, wid. Frank, h. 74 1-2 Federal

Whitaker Hobart K. principal, High school, h. 130 Federal

Wilson John T. died Aug. 7, 1906

### BEVERLY.

Abbott Clara F. wid. George P. died June 9, 1906 -

Amazeen Andrew W. rem. to 3 Laurel

Andren Alban, rem. to 42 Washington

**BEVERLY FARMS BAKERY AND LUNCH ROOM** (Charles A. Parker), 717 Hale, B. F. *See page 808*

Bisbee Henry C. died June 29, 1906

Bishop George H. rem. to New Hampshire

Breed Percy S. model maker, h. 32 Thorndike ave.

Cobb Albert F. rem. to 21 Pierce ave.

Cohen Benjamin, tailor, 75 Rantoul, h. at Lynn [18, 1906]

Cross Nancy J. wid. Philip E. died July Cunningham Wesley, produce, 298 Dodge, h. do.

Davis Eunice A. wid. William P. died Aug. 3, 1906 [Cabot]

Dodge Walter F. 22 Prospect, rem. to 50

Doogue Augusta L. Mrs. h. 37 Federal

Dooling Susan, wid. John, died June 9, 1906

Doyle Lucy A. died June 22, 1906  
 Dudley Edmund B. Dr. rem. residence  
 to Gloucester  
 Duffee Thomas C. & Co. last mnfrs. 121  
 to 125 Rantoul  
 Forrent Stephen, rem. to Warren  
 Foster William L. died July 17, 1906  
 Fox Walter, died July 19, 1906  
 Goodwin Moses H. clerk, 248 Cabot, rms.  
 28 Abbott  
 Henderson David R. died June 23, 1906  
 Hoogs Albert S. rem. to 53 Lothrop  
 Houghton George F. rem. to 46 Bridge  
 Jones Abbie K. wid. Charles E. died  
 June 18, 1906  
 Kelly Catherine A. died July 8, 1906  
 Klink Karl, b. 23 Vestry  
 Leland Sanford D. rem. to Winchester  
 Lewis Frank A. shipping clerk, h. 11  
 Bow  
 Lord William A. rem. to 5 Ellsworth ave.  
 Lovett James T. rem. to Attleboro  
 Lovett Mary E. died July 23, 1906  
 McMahon John J. rem. to Lowell  
 Morgan Frank A. rem. to Berwick, Me.  
 Murphy Elizabeth, wid. James N. died  
 July 20, 1906  
 Murphy Michael J. died July 20, 1906  
 North Shore Auto Passenger Co. J. F.  
 Standley, mngr.  
 Patterson Alexander S. groc. 208 Ran-  
 toul, h. do.  
 Place Amos F. out of business [Cabot  
 Powers N. D. Mrs. rem. bus. to 254  
 Rankin Deborah, wid. Silas, died July  
 27, 1906  
 Ring John H. h. 25 Pond  
 Schaefer William F. rem. to Salem  
 Shea Mary, rem. business to 90 Cabot  
 Simonds Eleanor G. b. 33 Pond  
 Simonds Horace F. Mrs. h. 33 Pond  
 Simonds Sue C. teacher, b. 33 Pond  
 Stuart Fred W. rem. to 55 Broadway  
 Surels John W. died July 18, 1906  
 Woodberry Jeremiah T. died July 13,  
 1906  
 Woodberry Lawrence L. rem. to 37  
 Thorndike ave.

#### DANVERS.

Banks Elmer P. died July 4, 1906  
 Brown Alice A. teacher, High school, b.  
 at Salem.  
 Carle John W. rem. bus. to 62 Maple  
 Cashman Michael, mngr. 32 Maple, rms.  
 42 High  
 Chase Benjamin F. rem. to 11 Cherry  
 Clark Harry J. rem. to Middleton  
 Cleveland R. L. Co. grain, 16 Elm; out of  
 business at 111 Centre  
 Day A. L. Mrs. rem. bus. from 176 Lo-  
 cust to Holten st.  
 Dingle Frederick W. rem. to Topsfield  
 Draper George F. rem. bus. to 52 Maple  
 Duren Charles M. (Chas. M. Duren &  
 Co., 97 Wash., S.), h. 21 Ash

Glenn James, rem. to 176 Pine  
 Goss Arthur L. h. 37 Elliott  
**HAINES EDGAR F.** physician, 29 Lo-  
 cust, h. do. Office hours, 1 to 3  
 and 7 to 8 P. M. Tel.  
 Ham Herbert C. rem. to 11 Trask  
 Harney James, h. Wadsworth c. Hobart  
 Hollingsworth & Parsons (Allen Hol-  
 lingsworth and William E. Par-  
 sons), restaurant, 17 Elm  
 Keene Jessie L. teacher, High school, b.  
**KOLB SAMUEL**, junk dealer, 37 Chest-  
 nut, h. do. See page 912  
 Lang Margaret, wid. William, rem. to  
 Winthrop  
 Langley Bros. pool room, 32 Maple  
 McHugh Eliza, 17 Elm, out of business  
 Marston-Mayo Co. rem. to 20 Locust  
 Moriarty Daniel D. died May 27, 1906  
 Newbegin George F. rem. to 7 Oak  
 Peabody Ebenezer, died July 23, 1906  
 Pilgrim Shoe Co. rem. to Boston  
 Putnam Elizabeth P. wid. Andrew M.  
 died June 30, 1906  
 Putnam Walter L. prin. Danversport  
 school, h.  
 Rowe Fred, rem. bus. to 19 Elm  
 Searle William F. h. 37 Elliott  
 Spears Thomas, rem. to Salem  
 Trask Harold P. clerk (S.), h. 35 Poplar  
 Waldron Ralph O. died July 9, 1906  
 Webber Parker, died June 21, 1906  
 Willey Nelson S. rem. to Boston  
 Woodman Chester I. rem. to 20 Water

#### MARBLEHEAD.

Bevins Elisha M. propr. Ferncroft Cabin,  
 h. at Salem  
 Byors Herbert F. rem. to Baltimore, Md.  
 Coates Benjamin N. rem. to Reading  
 Cole Samuel H. died July 23, 1906  
 Evans Annie P. rem. to Buffalo, N. Y.  
 Ferncroft Cabin, E. M. Bevins, propr.  
 Selman c. Circle  
 Foss Samuel, died July 12, 1906  
 Fuller Moses S. died July 16, 1906  
 Graves William H. died July 18, 1906  
 Hammond William D. died May 31, 1906  
 Harrington James H. died July 12, 1906  
 Hewitt William N. died May 31, 1906  
 Howe Elmer P. (Boston), h. off Beacon  
 Ingalls Frank G. rem. to 4 Washington  
 sq.  
 King Thomas G. died July 4, 1906  
 Marblehead Savings Bank, rem. to 154  
 Washington sq.  
 Martin John S. died July 13, 1906  
 Munroe Edward M. died June 26, 1906  
 Munroe Isaac M. died June 11, 1906  
 O'Brien Edward B. rem. to 29 Waldron  
 Potter Henry A. died June 23, 1906  
 Quiner Mary, died Apr. 29, 1906  
 Quiner William H. (Peare & Quiner), h.  
 75 Pleasant  
 Reynolds Michael H. died July 2, 1906  
 Rodgers Mary L. died June 9, 1906



Stacey Irving, died May 11, 1906  
 Trasher Frank K. rem. to Center Sand-  
 wich, N. H. [48 Lee  
 Valway Joseph, mason, r. 24 Front, h.  
 Wilson Francis B. died May 25, 1906  
 Woolston Josiah, died June 7, 1906

**PEABODY.**

Balcomb Edwin B. rem. to Salem  
**BELLEW'S EXPRESS**, M. L. Bellew,  
 prop. 13 and 15 Lowell. *See page*  
 532.  
 Bowes Ellen, wid. John, died July 18,  
 1906  
 Carroll Patrick, died May 23, 1906  
 Cleveland Edmund J. pastor, St. Paul's  
 Epis. church, h.  
 Coughlin John F. died June 24, 1906  
 Devarenne Adolph, died July 7, 1906  
 Dietrick Will A. pastor, South Cong.  
 church, h. 20 Chestnut  
 Donnell W. Arthur, rem. to Danvers  
 Green Thomas E. died June 22, 1906  
 Hall Elizabeth, wid. William H. rem. to  
 Malden

Hammond John H. died May 23, 1906  
 Hayes Patrick, died July 4, 1906  
 Hayes Thomas F. rem. to 38 Andover  
 Holden Charles, died June 25, 1906  
 Laliti Otto, h. 18 Dalton's ct.  
 McCarthy Timothy, died June 3, 1906  
 McPoland James, died June 19, 1906  
 Masterson Patrick D. Rev. rem. to West  
 Lynn  
 Murphy Michael, died June 7, 1906  
 O'Hearn John J. asst. pastor, St. John's  
 church, h. r. 27 Chestnut  
 Paraskevas Christopher, boot-black,  
 bsmt. 7 Lowell  
 Parmenter John W. rem. to Lowell  
 Patterson Joshua, died June 24, 1906  
 Pitman Clarence B. rem. to Salem  
 Porter & Wilson, dissolved partnership  
 Putnam Charles E. driver, h. Granite  
 Shove William P. died June 30, 1906  
 Timmerbacka Alexander, died July 13,  
 1906 [Fulton  
 Wallace Patrick J. bar tender (S.), h. 51  
 Wilson Warren, rem. to Malden

**SALEM FIRE LIMITS.**

(*City Ordinances, Chap. 4,—Sec. 8.*)

“SECTION 8. The fire limits of the city of Salem shall include all that part of the city inclosed by the following described lines, to wit: Beginning at the junction of Essex and North streets, thence running northerly through the middle of North street to Lynde street, then easterly through the middle of Lynde street to a point one hundred feet distant from the westerly line of Washington street, then northerly and parallel to the westerly line of Washington street and one hundred feet distant therefrom to the middle of Federal street, thence easterly through the middle of Federal street to a point one hundred feet distant from the easterly line of Washington street, thence southerly and parallel to the easterly line of Washington street and one hundred feet distant therefrom to the middle of Church street, thence easterly through the middle of Church and Brown streets, to Washington square (west), thence southerly through the middle of Washington square (west) and Elm street across Derby street, and continuing on the same course and in a straight line to the channel of South river, thence northwesterly by the channel of South river to and across Lafayette street, thence southerly by the westerly line of Lafayette street to a point in said line one hundred feet distant from the southern line of Dodge street, thence westerly and parallel to the southern line of Dodge street and one hundred feet distant therefrom to a point one hundred feet distant from the easterly line of Washington street, thence southerly in a straight line to the middle of Washington street at a point opposite the center of Pond street, thence westerly and northerly through the middle of Washington and Mill streets to the middle of Norman street, thence westerly through the middle of Norman street to Summer street, thence northerly through the middle of Summer street to the junction of Essex and North streets and point begun at.”

**WARD BOUNDARIES.**

WARD 1. All that portion of the city lying east of Washington street, and between Essex street and South River; also Salem Neck and the Islands.

WARD 2. All that portion of the city lying east of Washington street, and between Essex street and North River.

WARD 3. All that portion of the city lying west of Washington street, south and east of Essex street and Highland avenue, and west of the B. & M. railroad main line.

WARD 4. All that portion of the city lying west of Washington street, north and west of Essex street and Highland avenue, and south and west of North River and the new canal.

WARD 5. All that portion of the city lying south of South River, and east of the B. & M. railroad main line including South Salem.

WARD 6. All that portion of the city lying north of North River and the new canal, including North Salem.

**VILLAGES, HILLS, PARKS, PLACES, ETC.**

Carltonville, part of Ward 6, near Oak and Flint streets.	Liberty Hill, foot Liberty Hill ave.
Castle Hill, at junc. Ocean ave. and B. & M. R. R.	Lookout Hill, Highland ave.
Cold Spring, off Liberty Hill ave., near Sargent.	Mack Park, junc. Grove and Mason
Fort Lee, left of Fort ave. near Willows	Mason Hill, off Mason at Myrtle
Fort Pickering, Winter Island	Nauvoo, portion of Ward 3, near Mill pond
Gallows or Witch Hill, west of Boston st.	Neck, at eastern end of Salem
Juniper Point, Salem Neck, near Willows	North Salem, all of Ward 6.
Kernwood, North Salem, at end of Sargent	South Salem, all of Ward 5.
Legg's Hill, off Loring ave.	Unionville, portion of North Salem, at Grove, Phillips and Irving sts.
	Willows, eastern part of Salem Neck
	Winter Island, south of Salem Neck

**WHARVES.**

Almshouse, near Almshouse	Langmaid's, 293 and 313 Derby
Baldwin's, 285, 287, 291 Derby	Peabody's, 255 Derby
Central, 187 Derby	Pennsylvania Pier, Derby opp. Webb
Clark's, 29 Peabody	Phillips', 45 and 65 Derby
Collins' Bros., 72 North	Pickering's, 17 Peabody and 87 Union, and 197 Derby
Derby, 173 Derby, opp. Custom House	Putnam's, 235 Derby
Fairfield's, 283 Derby and 60 Central	Salem Gas Co.'s, near Essex Bridge
Hamilton & Balcomb's, 275 Derby	Whipple's, 179 to 183 Derby
Hunt's, foot of White	
Lane's, rear 77 Union	

**RAILROAD STATIONS.**

Carltonville, 68 Flint	Loring ave. (flag station)
Castle Hill, Ocean ave. near Canal	North street, North near Bridge
Forest River, Lafayette at lead mills	Salem, Washington c. Norman

**BUILDINGS, HALLS, ETC.**

Academy Hall, 157 Essex	Juniper Hall, Juniper Point
Almshouse, Salem Neck	Kimball Block, 219 Essex
Ames Memorial Hall, Y. M. C. A. bldg.	King Building, 256 1-2 Essex
Armory Hall, 193 Washington	Kinsman Block, 81 Washington
Armory "Light Infantry," 12 Wash- ton sq.	Kotarski Block, 167 to 169 Derby
Armory, Salem Cadets, 136 Essex	Lawrence Place, Front cor. Washington
Asiatic Building, 125 Washington	Liberty Hall, 62 North
Association Factories, 242 to 246 Canal	Lyceum Building, 33 to 43 Church
Atlantic Hall, 15 Harbor View ave.	Lynde Block, 145 Essex
A. O. H. Hall, 46 Lafayette	Manning Building, 53 Washington
A. O. U. W. Hall, 53 Washington	Mansfield Building, 291 Essex
Bertram Home for Aged Men, 114 Derby	Market House, Derby Square
Bowker Place, 150 Essex	Masonic Hall, 81 Washington
Browne's Block, 228 Essex	Maynes Block, 202 1-2 Essex
Cadet Armory Hall, 136 Essex	Museum, 161 Essex
Cate's Block, 69 to 73 Washington	Naumkeag Building, 209 Essex
City Hall, 93 Washington	Neal & Newhall Building, 228 Essex
City Orphan Asylum, 215 Lafayette	Neal & Newhall Annex, 101 Washington
City Scales, 169 Bridge	Newcomb Building, 3 to 7 Central
County Court Houses, Federal c. Wash- ington	Normal School, Lafayette c. Loring ave.
County Jail, foot of St. Peter	Northey Building, 106 Washington
Creamer Block, 243 1-2 Essex	Odd Fellows' Hall, 81 and 125 Wash- ington
Custom House, Derby opp. Derby wharf	Odell Block, 60 to 66 Washington
District Court, 193 Washington	O. U. A. M. Hall, 175 Essex
Downing's Block, 175 Essex	Peabody Academy of Science, 161 Essex
East India Marine Hall, 161 Essex	Peabody Building, 126 Washington
Endicott Buildings, 240 Essex, 94 Wash- ington	Perley Block, 252 Essex
Essex Block, 17 St. Peter	Phoenix Building and Hall, 41 Lafayette
Essex Institute, 132 Essex	Plummer Farm School, Winter Island
Forresters' Hall, 219 Essex	Plummer Hall, 134 Essex
Franklin Place, 10 and 12 Washing- ton Square	Police Station, 15 Front
Grand Army Hall, 17 St. Peter	Post Office, 118 Washington
Hale Building, 223 Essex	Power Building, 144 Washington
Hamilton Hall, 7 Cambridge	Price Building, 237 Essex
Harding Block, 23 Brown	Public Library, 370 Essex
Harrington Place, 266 Essex	Pulaski Hall, 167 1-2 Derby
Hawthorne Building, 203 to 211 Wash.	Pythian Hall, 243 1-2 Essex
Hawthorne Building, 195 Essex	Rivet Block, 31 to 33 1-2 Palmer
Holyoke Building, 114 Washington	St. Joseph's Hall, 18 Harbor
Home for Aged Women, 180 Derby	Salem Athenæum, 134 Essex
	Salem Five Cents Savings Bank Building, 210 Essex

Salem Fraternity Rooms, 11 Central  
 Salem Hospital, 31 Charter  
 Salem Theatre Building, 259 to 261  
 Essex  
 Salvation Army Hall, 8 Front  
 Studio Building, 2 Chestnut  
 Team Drivers' Hall, 64 Lafayette

Temperance Hall, 47 Warren  
 Town Hall, Derby Square  
 Tracy Building, 131 to 131B Essex  
 West Block, 188 Essex  
 Young Men's Christian Assoc. Building,  
 284-292 Essex

## STATE NORMAL SCHOOL, SALEM.

This School was opened Sept. 12, 1854. It was the fourth normal school established by the State of Massachusetts, and is one of the oldest in the country. Richard Edwards, L. L. D., was Principal three years. Prof. Alpheus Crosby, eight years. Daniel B. Hagar, Ph. D., thirty-one years. Walter P. Beckwith, Ph. D., ten years. The present principal began service January 30, 1906. The regular course of study occupies two years. Advanced courses are offered for graduates of Colleges and normal schools, and teachers of experience. Tuition and text books are free. Pecuniary aid is given to needy pupils. The Normal School building, cor. Broad and Summer streets was dedicated Sept. 14, 1854, and was remodelled in 1871. The fine new school building at the corner of Lafayette street and Loring avenue was dedicated Jan. 26, 1897.

*Principal*—J. Asbury Pitman. *Assistants*—Harriet L. Martid, Jessie P. Leary, Charles E. Adams, Charles F. Whitney, William C. Moore, M. Alice Warren, Isabella G. Knight, Gertrude B. Goldsmith, Fannie B. Deane, Sarah L. Baker, Helen H. Rogers, Cassie L. Paine, Fred W. Archibald, Maud Oldham.

### Vote of Salem on License Question.

May 7—1872.		Dec. 12—1893.	
Yes,—1,063.	No,—1,221	Yes,—2,469.	No.—2,644.
Dec. 13—1881.		Dec. 11—1894.	
Yes,—1,716.	No,—1,002	Yes,—2,728.	No,—2,603.
Dec. 12—1882.		Dec. 10—1895.	
Yes,—1,879.	No,—870.	Yes,—2,390.	No,—3,318.
Dec. 11—1883.		Dec. 8—1896.	
Yes,—1,653.	No,—1,804.	Yes,—2,540.	No,—3,080.
Dec. 9—1884.		Dec. 14—1897.	
Yes,—2,628.	No,—510.	Yes,—2,396.	No,—3,223.
Dec. 8—1885.		Dec. 13—1898.	
Yes,—1,748.	No,—793.	Yes,—2,351.	No,—3,017.
Dec. 14—1886.		Dec. 12—1899.	
Yes,—2,104.	No,—1,567.	Yes,—2,989.	No,—2,829.
Dec. 13—1887.		Dec. 11—1900.	
Yes,—2,204.	No,—1,601.	Yes,—2,774.	No,—3,332.
Dec. 11—1888.		Dec. 10—1901.	
Yes,—2,437.	No,—1,209.	Yes,—2,912.	No,—3,082.
Dec. 19—1889.		Dec. 9—1902.	
Yes,—2,237.	No,—1,293.	Yes,—3,367.	No,—2,788.
Dec. 9—1890.		Dec. 8—1903.	
Yes,—2,160.	No,—1,353.	Yes,—3,109.	No,—3,120.
Dec. 8—1891.		Dec. 13—1904.	
Yes,—2,262.	No,—1,630.	Yes,—3,059.	No,—3,513.
Dec. 13—1892.		Dec. 12—1905.	
Yes,—2,282.	No,—2,584.	Yes,—3,433.	No,—3,397.

## SALEM NICKNAMES.

Salem is unusually prolific in local nomenclature. There is hardly a lane or alley, hill or hollow, which has not borne some nickname more or less appropriate at some period of its history. In this age of directories such names become lost, giving place to the recognized title.

All down town, below Pleasant street, was formerly known as Wapping, so named from Wapping in London.

North Salem was christened Pigeonville, and many still call it North Fields, a later title.

Castletonville, now nicknamed Nauvoo, was a locality where Winthrop and Endicott streets now are. A man named Joe Smith built a house there about the same time that Joe Smith the Mormon, settled Nauvoo.

Roast meat hill, applied to the rising ground back of High street.

Knocker's hole was in the vicinity of Mill and Margin streets. There was a shipyard there in the last century.

Button hole was near the jail, and the Button hole toughs used to have fights with the Knocker's hole gang.

Vinegar hill was on Broad street.

Circus lane is now Hathorne street, the fields out that way being let years ago for circus performances.

Liberty hill is in North Salem, off Appleton street. There was a little picnic ground there years ago and quite a story could be written of its history.

Buffum's corner was at the junction of Boston and Essex streets, named after a Buffum who kept store there about 150 years ago.

Neck-gate denoted the end of Derby street.

Blubber hollow was from Federal to Goodhue street, also known as Town bridge.

Johnny Cake hill stood between Blubber hollow and the big tree on Boston street.

Carltonville is a section of North Salem on Mason street.

From the big tree to the Peabody burying ground was called Trask's plain.

The Nubble was a locality near the Peabody burying ground.

Goose lane ran from Federal to Fowler street.

Lovers' lane was off Tremont street.

Plank alley was a part of Elm street between Charter and Essex.

Baptist hill, in the rear of Federal street, named from the First Baptist Church, now called Odell square. They used to baptize in a pond near by.

Gallows hill, in the rear of Boston street, the scene of the Witchcraft executions of 1692 is too well known to require anything beyond mere mention. As also the town pastures and Castle hill, which still hold their names.

Creek street is so named because it is built over what was a creek, but is now culverted over.

School house lane was the early name given Washington street, afterward Court street.

"Nahum Keike," or Naumkeag, was the original Indian name for North river.

Federal street was so named in 1766, as an indication of the united feeling, in favor of something better than an eight-foot way along the North River. The portion from Washington to North was previously called Marlborough street; and the eastern portion County street.

Old Paved street was the name of Essex between Washington and North for many years, it being paved about 1773. King street and Main street are also names which have been applied to Essex street.

## PRECINCT BOUNDARIES.

PRECINCT ONE, all that portion of Ward 1, lying east of the center of Daniels street.

PRECINCT TWO, all that portion of Ward 1, lying west of the center of Daniels street.

PRECINCT THREE, all that portion of Ward 2, within the following lines, viz:—Commencing at the corner of Essex and Washington streets, thence running easterly through the center of Essex street to Collins Cove, then by the line of Collins Cove to Briggs street, thence through the center of Briggs street, Washington square, and Winter street to the western corner of Northey and Briggs street, then westerly by Bridge street including both sides thereof to Washington street, thence southerly through the center of Washington street to the corner of Essex and Washington streets and point begun at.

PRECINCT FOUR, all that portion of Ward 2, within the following lines, viz:—Commencing at a point on North River, near the foot of Northey street, then running southerly by Northey street, including both sides of said street, and all of

Woodbury court to Bridge street, thence across Bridge street and continuing southerly through the center of Winter street, thence easterly and southerly through the center of Washington square to Briggs street, thence easterly through the center of Briggs street to Collins Cove, thence by the northern and western lines of Collins Cove, and Beverly harbor to Essex Bridge, thence northerly and westerly by the line of North River to the point begun at.

PRECINCT FIVE, all that portion of Ward 3, lying east and south of a line commencing at the corner of Essex and Summer streets, thence running through the center of Summer street, to Broad street, thence westerly through the center of Broad street to Hathorne street, thence southeasterly through the center of Hathorne street to the Mill Pond, and continuing in the same direction on a straight line to the tracks of the Boston & Maine Railroad.

PRECINCT SIX, all that portion of Ward 3, lying west and north of a line commencing at the corner of Essex and Summer streets, thence running southerly through the center of Summer street to Broad street, thence westerly through the center of Broad street to Hathorne street, thence southeasterly through the center of Hathorne street to the Mill Pond, and continuing in the same direction on a straight line to the tracks of the Boston & Maine Railroad.

PRECINCT SEVEN, all that portion of Ward 4, within the following lines, viz. :—Commencing at the corner of Essex and Washington streets, thence running northerly through the center of Washington street to North River, thence southwesterly and northwesterly by the line of North River and the North River Canal to Grove street, thence through the center of Grove street to Goodhue street, thence through the center of Goodhue street, to the junction of Goodhue and Bridge streets, thence by the northeast and southeast lines of Hose house No. 4 to Boston street, thence easterly through the center of Boston street to Essex street, thence through the center of Essex and Washington streets and point begun at.

PRECINCT EIGHT, all that portion of Ward 4, within the following lines viz. :—Commencing at the corner of Essex and Boston streets, thence running westerly through the center of Boston street to Hose house No. 4, thence by the southeast and northeast lines of said hose house to the junction of Bridge and Goodhue streets, thence through the center of Goodhue street to Grove street, then through the center of Grove street to North River Canal, then northerly by said canal and the railroad tracks to the Salem and Peabody boundary line, thence continuing by said boundary line in a general southwesterly direction to and across Boston street, and on the same course by said boundary line to the boundary line between Lynn and Salem, thence continuing easterly by the last named boundary line to Highland avenue, thence continuing southeasterly through the center of Highland avenue and Essex street to the corner of Essex and Boston streets and points begun at.

PRECINCT NINE, all that portion of Ward 5, within the following lines, viz. :—Commencing on Lafayette street at South Bridge, thence running southerly through the center of Lafayette street to Leach street, thence easterly through the center of Leach street to Salem Harbor, thence northerly, easterly and again northerly by the line of Salem Harbor, and westerly by the line of South River to South Bridge and the point begun at.

PRECINCT TEN, all that portion of Ward 5, within the following lines, viz. :—Commencing on Lafayette street at South Bridge, thence running southerly through the center of Lafayette street to Leach street, thence easterly through the center of Leach street to Salem Harbor, thence in a general southeasterly and southwesterly direction by the line of Salem Harbor to the Forest River Lead Mills, thence southwesterly and westerly by the Marblehead and Swampscott boundary lines to a point where the last named boundary line crosses the main tracks of the Eastern Railroad near Thompson's meadow, thence northeasterly and northerly by said tracks to the Eastern Railroad Depot, thence easterly by the line of South River to South Bridge and the point begun at.

PRECINCT ELEVEN, all that part of Ward 6, lying east and north of a line commencing at the bridge over North River, thence running northwesterly through the center of North street to School street, thence westerly through the center of School street to Tremont street, thence northwesterly through the center of Tremont street to Peabody line.

PRECINCT TWELVE, all that part of Ward 6, lying west and south of a line commencing at the bridge over North River, thence running northwesterly through the center of North street to School street, thence westerly through the center of School street to Tremont street, thence northwesterly through the center of Tremont street to the Peabody line.

## SALEM FIRE ALARM — LOCATION OF BOXES.

<b>7</b>	Columbus ave. and Beach ave.	<b>86</b>	Tremont and School
<b>8</b>	Almshouse	<b>92</b>	North near Franklin
<b>9</b>	Fort ave. and Harbor View ave.	<b>93</b>	Kernwood
<b>12</b>	Pennsylvania Pier	<b>94</b>	North near Nursery
<b>13</b>	Essex near English	<b>95</b>	Chandler and Symonds
<b>14</b>	Phillips Wharf	<b>121</b>	Plummer Farm School
<b>15</b>	Derby and Bentley	<b>122</b>	Lafayette and Loring ave.
<b>16</b>	Allen and Webb	<b>123</b>	Castle Hill
<b>17</b>	Derby near Becket	<b>124</b>	Electric Light Station
<b>18</b>	Police Station	<b>125</b>	Washington near Dodge
<b>19</b>	Charter and Elm	<b>126</b>	Palmer and Pingree
<b>21</b>	Derby and Central	<b>127</b>	Salem near Everett
<b>23</b>	Derby and Union	<b>128</b>	Washington near Engine House
<b>24</b>	Essex and Washington sq. (East)	<b>134</b>	Lafayette near No. 437
<b>25</b>	Spring and Webb	<b>136</b>	Loring ave. near Loring Farm
<b>26</b>	Washington sq. and Briggs	<b>212</b>	Gas House
<b>27</b>	Bridge and Planters	<b>213</b>	Bridge near Hubon
<b>28</b>	Bridge near Beacon	<b>214</b>	B. & M. Car Shops, Bridge st.
<b>29</b>	Salem Jail	<b>215</b>	Cross and Saunders
<b>31</b>	Salem Hospital	<b>312</b>	Norman and Crombie
<b>32</b>	Bridge near Northey	<b>412</b>	Proctor and Pope's Court
<b>34</b>	West Yard	<b>512</b>	Naumkeag Mills
<b>35</b>	St. Peter near Church	<b>513</b>	Cabot near Cedar
<b>36</b>	Bridge near Ash	<b>514</b>	Cabot and Roslyn
<b>37</b>	Essex and Washington sq. (West)	<b>515</b>	Leach and Summit ave.
<b>38</b>	Essex and Central	<b>521</b>	Chadwick Lead Works
<b>39</b>	Washington and Federal	<b>612</b>	Felt and Dearborn
<b>41</b>	Highland ave.	<b>613</b>	Mason and Buffum
<b>42</b>	Mill and High	<b>614</b>	Dearborn and Walter
<b>43</b>	Town House Square	<b>615</b>	North Street Engine House
<b>45</b>	Jefferson ave. near Winthrop	<b>621</b>	Irving and Harrod
<b>46</b>	Federal and Beckford	<b>622</b>	Balcomb and Oakland
<b>47</b>	Endicott and Summer		
<b>48</b>	Bow and Logan		
<b>49</b>	Flint and Broad		
<b>51</b>	Vinnin Square		
<b>52</b>	Highland ave. near Jackson		
<b>53</b>	Essex near Public Library		
<b>54</b>	Chestnut and Pickering		
<b>56</b>	Summer and Broad		
<b>57</b>	Essex near North		
<b>58</b>	Essex and Boston		
<b>59</b>	Federal and Flint		
<b>61</b>	Bridge and North		
<b>62</b>	Boston near Safford		
<b>63</b>	Bridge near Lynn		
<b>64</b>	Bridge and Goodhue		
<b>65</b>	Nichols and Prospect		
<b>67</b>	Boston near Prospect ave.		
<b>68</b>	Rawlins near Prospect		
<b>71</b>	Broadway near Ocean ave.		
<b>72</b>	Harbor and Salem		
<b>73</b>	Harbor and Congress		
<b>74</b>	Lafayette near Gardner		
<b>75</b>	Lafayette and Ocean ave.		
<b>76</b>	Lafayette and Willow ave.		
<b>81</b>	Barr near Harmony		
<b>82</b>	Mason and Tremont		
<b>83</b>	Cabot Farm		
<b>84</b>	Mason and Grove		
<b>85</b>	Mason near Oak		

One stroke will be given daily at 6.45 A. M., 12.45 and 6.15 P. M. to test the alarm.

Two strokes signify that the fire is out.

Four strokes, second alarm.

General alarm, same number of box repeated once.

Five strokes, repeated three times, signify call for fire out of city.

Ten strokes, repeated three times, indicate police call.

Three strokes at 11.15 A. M. indicate double session in primary schools.

Three strokes at ten minutes before time for closing, double session in grammar schools.

Three strokes at 7.55 A. M. indicate "no school" in the forenoon for all the schools.

Three strokes at 1.30 P. M. indicate that no afternoon session of the schools will be held.

Three strokes after an alarm, electric light signal.

Four blows, repeated three times, military call.

LEE and SMITH,  
Reliable Piano, Fur-  
niture, Safe and  
Machinery Movers.



China and Furniture Packers

BAGGAGE EXPRESS.

Office, 78 Washington St., Salem, Mass.

(Opposite City Hall.)

Telephone 1020.

B. A. LEE, 5 1-2 Cushing Street.

A. C. SMITH, 10 Foster Street.

Telephone 316-2.

Telephone 609-13.

STABLE, 11 FOSTER STREET.

LEE and SMITH,  
HACK, BOARDING,  
LIVERY AND SALE  
STABLE.

Hay and Straw For Sale.



78 Washington Street.

OPP. CITY HALL. Tel. 1020.

11 Foster Street.

Tel. 609-13.

SALEM, MASSACHUSETTS.



---

**JOSEPH A. DAVIS,**

Manufacturer of

**WRITING INKS.**

Joy's Commercial, Universal Black, Stenographic and Waterproof. Also  
Stencil Stamp and Marking Inks.

**52 Webb Street, - - - Salem, Mass.**

---

**The Naumkeag Directory**

With its large circulation is

One of the

**Best Advertising Mediums**

In

**Essex County.**

**H. M. MEEK PUBLISHING CO.**

**Salem, Mass.**

---

**Brown Bros. Company's**

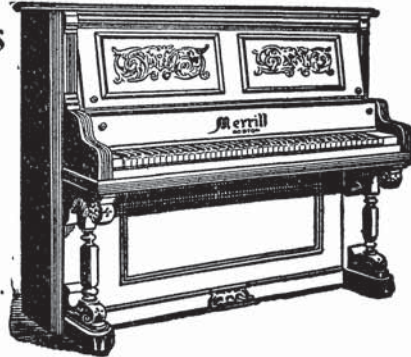
(INCORPORATED.)

**Music Store.**

Merrill Pianos and Other Good Makes.

**289 Essex St., Salem, Mass.**

Telephone 972.



---

**JOB H. CRESSEY,**  
**Wholesale Grocer and**  
**Country Produce.**

Telephone 792-1.

**32 FRONT STREET, - SALEM, MASS.**

L. E. Dockham, Manager. Res. Tel. 543-2.

---

**WASHINGTON SPA**

S. J. COSTELLO, Manager.

**SALEM'S LEADING RESTAURANT**

For Ladies and Gentlemen.

**216 ESSEX STREET, = = SALEM.**

Telephone.

---

**ARTHUR BERNIER,**  
**CARPENTER, CABINET MAKER**

And Wheelwright.

Prompt and personal attention given to any end of the work.

**SHOP, REAR 24 NEW DERBY ST., - SALEM.**

(UPSTAIRS.)

---

**ALBERT K. WOODBURY,**  
**Carpenter and Jobber,**

RESIDENCE, 50 HOWARD STREET,

SHOP, 58 HOWARD STREET,

Jobbing of all kinds personally attended to.

Telephone.

SALEM, MASS.

**MILTON LOCKE AND SON**  
**Stair Builders**

POSTS RAILS & BALUSTERS OF EVERY DESIGN ALSO Piazza stock Furnished at Short Notice

Estimates Given on all Stairwork  
 ORDERS BY MAIL PERSONALLY ATTENDED TO  
 WOOD TURNING, IRREGULAR MOULDING, BAND SAWING etc.

Milton Locke  
 23 WALTER ST.  
 Albert E. Locke  
 5 FAIRMOUNT ST.

**65 NORTH ST.**  
**Salem, Mass.** Telephone Connection

---

## H. HARRIS,

Dealer in Gents' Clothing, Ladies' Garments, Millinery, Gents' Furnishing Goods, Hats, Caps, Trunks, Bags, Jewelry, Etc.

**79 HARBOR ST., SALEM, MASS.**

JACOB WEINSTEIN, Manager.

HIGH GRADE TAILORING.

**The American Tailoring Co.,**  
**SUITS MADE TO ORDER**  
 At Popular Prices.

Cleaning and Pressing of Ladies' and Gent's Garments a specialty.

81 LAFAYETTE STREET, - SALEM, MASS.

---

## S. GOLDBERG,

### Wholesale Jobber in Confectionery.

Penny Goods and Novelties a specialty.

A full line of Tobacco, Cigars, Twine, Paper and Paper Bags at the lowest prices. Call or send postal and I will call on you with a full line of samples.

**77 Lafayette Street, - - Salem, Massachusetts.**  
 Telephone 8610.

---

# Upton's Cold Capsules,

CURE ALL SORTS OF COLDS.

You can't have a cold and use them at the same time.

## UPTON, The Druggist,

Cor. Washington and Front Sts., - SALEM, MASS.

---

CHARLES A. GOLDMAN.

LOUIS H. GOLDMAN.

## GOLDMAN BROTHERS,

Dealers in

Men's and Boys' **CLOTHING** Ladies' and Misses'

Millinery, Furs, Watches and Jewelry.

Number 4 Central Street, Telephone Connection. Salem, Mass.

---

## MISS A. OUELLETTE,

Dry Goods and Millinery. Fancy  
and Toilet Articles . . . .

---

A FULL LINE OF GOODS AT LOWEST PRICES.

80 HARBOR STREET, - SALEM, MASS.

---

## E. C. LEE,

### Machinist and Blacksmith.

**Automobile Repairs and Supplies.**

STEAM, WATER and GAS PIPING. Personal attention given to all Work and satisfaction guaranteed. A portion of your trade solicited. FINE and EXPERIMENTAL WORK.

**73 and 75 Lafayette Street, - Salem, Mass.**

Telephone Connection.

---

# L. B. MOODY,

131 Washington Street, Salem, Mass.

DEALER IN

**Newspapers, Periodicals, Magazines,**

STATIONERY, BOOKS, ETC.

Fancy Goods, Jewelry, Etc.

---

## NEWSPAPERS

WHOLESALE and RETAIL.

Delivered in all parts of the  
City by

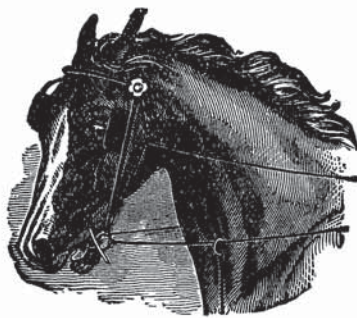
**A. F. Goldsmith & Co.**

4 Barton Square, Salem. Tel. 495-12.

---

# **J. S. NELSON & SON,**

Shippers of



## COUNTRY HORSES.

Dealers in

Carriages, Sleighs, Harness, Robes,  
Blankets, Whips and Horse  
Furnishings.

37, 39 and 43 Bridge Street, - Salem, Mass.

Agents for Moyer's Fine Carriages.

---

**E. G. MERRILL,**  
**Portrait Photography**

Including Home Portraiture.

Select Assortment of Frames and Framing.

256 1-2 ESSEX STREET, -- SALEM, MASS.  
*Telephone.*

---

**NAUMKEAG CREDIT CO.,**

S. GOLDMAN, Proprietor.

DEALERS IN

**Men's, Boys', Ladies' and  
 Misses' Clothing.**

Millinery, Watches and Jewelry on Credit at Strictly Cash Prices.  
*OPEN EVENINGS.*

**174 1-2 Essex Street, - Salem, Mass.**

---

**W. P. RADFORD & COMPANY,**

Wholesale and Retail Dealers in

**CIGARS, TOBACCO, PIPES, ETC.**

Also Newsdealers, Stationery, Periodicals.

159 and 161 WASHINGTON ST., SALEM, MASS.  
*Telephone Connection.*

---

**C. M. DUREN & CO.,**

"Ye Remembrance Shop."

**Artistic Potteries and Brasses.**

FINE STATIONERY.

Engraving and Office Supplies.      Circulating Library.

**97 Washington Street, - - Salem, Mass.**  
*Telephone 1192.*

# HISTORICAL AND INTERESTING EVENTS

OF

# SALEM

1900-1906

Copyright, 1906, by the Henry M. Meek Publishing Co. All rights reserved against publication by any other person

1900.

Jan. 6. Salem Fraternity bequeathed \$20,000 by will of J. C. Rogers.

Jan. 9. Walter Scott Dickson endows Tufts College with a \$50,000 professorship on condition that Rev. E. C. Bolles be given the chair.

Jan. 12. \$3,000 fire at Tontine building.

Jan. 31. Aldermen petition for new city charter.

Feb. 16. Thomas Hamilton killed by express wagon.

Feb. 26. Clarence Murphy's case presented at U. S. Supreme Court on a writ of error.

March 3. L. & B. R. R. acquire possession of all roads in vicinity of Salem.

March 5. Death of Chas. S. Nichols.

March 7. John Creedon killed by train near Swampscott.

March 15. Death of Caleb Smith.

April 14. Schooner Carl Schurz run down in harbor and sunk by the Wm. N. Roberts.

April 16. School board voted to discontinue kindergartens.

May 12. Death of Walter Scott Dickson.

May 13. Death of Charles W. Palfray.

May 15. Misery Island sold to syndicate.

May 17. Will of W. S. Dickson made public. Many bequests to institutions of Salem and vicinity.

May 19. Death of John H. Langmaid at Paris.

June 26. Death of G. A. D. Stickney.

July 9. Death of Henry M. Meek.

July 17. City Council votes \$6,500 for Castle Hill school.

July 18. H. C. Page appointed general superintendent L. & B. R. R.

July 20. Barton Square church property leased for new theatre.

Aug. 30. Plan for new Salem and Beverly bridge presented by Mayor Little.

Sept. 7. Daniel Crimmins instantly killed by train near Northey street.

Sept. 13. Visit of Lyman Gage, Sec. of U. S. Treasury.

Sept. 15. Essex County parade of G. A. R.

Sept. 24. H. G. O'Donnell fatally injured at Boston.

Sept. 24. Work of remodeling Postoffice completed.

Sept. 30. New St. James Church used for worship.

Oct. 2. Visit of "Father" Clark.

Oct. 8. Carter's morocco shop destroyed by fire.

Oct. 15. James W. Nichols convicted of forgery of a deed.

Oct. 17. Body of Geo. E. Bailey found in Floating Bridge Pond.

Oct. 19. Death of Major Thomas H. Johnson.

Oct. 20. John H. Best, suspected murderer of Bailey, brought to Salem.

Oct. 21. St. James church dedicated.

Oct. 27. Wm. P. Walsh killed by shifter.

Oct. 29. Vestibule cars crash into each other at Gardner's hill.

Nov. 2. Bailey inquest begins.

Nov. 22. L. & B. R. R. granted franchise for road over Highland avenue.

Nov. 23. Sudden death of Albert B. Russell.

Dec. 4. New England swept by small cyclone, 10 vessels wrecked in Salem and Beverly harbors.

Dec. 8. Fannie Lynch, 13 years old caught robbing the mails.

1901.

Jan. 12. Horace S. Traill, a former proprietor of the Salem Observer, died.

Jan. 13. Fire in Glover building, Lafayette street. Loss about \$4,000.

Jan. 19. Central Baptist church celebrates its 75th anniversary..

Jan. 22. New hall of St. Joseph's parish, Harbor street, opened.

Jan. 24. Mrs. Nancy Colwell Blake of Boston bequeathed about \$40,000 for chapel at Harmony Grove cemetery.

Jan. 25. John C. Best indicted for murder of George E. Bailey at Saugus.

Jan. 27. Death of James Harris.

Feb. 1. Schooner Sarah Potter hauled off the rocks at Salem Neck after many attempts.

- Feb. 2. Memorial service at St. Peter's church in honor of Queen Victoria.
- Feb. 10. Fire in Central House block. Loss about \$10,000.
- Feb. 20. Opening of Almy, Bigelow & Washburn's remodeled store.
- Feb. 23. Frank Webber, 7 years old, had legs crushed by cars and died.
- March 6. Hezekiah Sleeper, sexton of Universalist church for 54 years, died at age of 89 years.
- March 11. Death of Dr. Leroy J. Cherrington.
- March 15. Walter R. Luscomb suffocated at fire in Avertiser building, Boston.
- March 20. Henry P. Moulton appointed U. S. district attorney.
- April 5. Gov. Crane signs bill prohibiting turning of manufacturers' waste into North River.
- April 6. Death of William G. Webber.
- April 7. Fire destroys Gifford's mills; loss about \$50,000.
- April 16. Sudden death of Capt. J. Warren Luscomb.
- April 25. New Salem Theatre opened with presentation of "Way Down East."
- May 1. No license goes into effect.
- May 11. Death of Michael H. Flynn.
- May 12. Death at Andover of Hon. Willard P. Phillips, formerly of Salem.
- May 20. B. J. Mulligan assigns; liabilities about \$200,000.
- June 1. Almost a riot on Essex street caused by clothing gift.
- June 10. Board of trade organized.
- June 13. Sarah McSwiggin burned to death at her home on Boston street.
- June 18. Elias C. Larrabee struck by bicyclist on Bridge street and fatally injured.
- June 26. Aldermen refuse to confirm Packard as city marshal.
- July 2. Fire in Hurley block, Bow street; loss, \$10,000.
- July 10. Death of Gilbert L. Streeter, financier and editor.
- July 10. First public exhibition of wireless telegraphy in this city by Brown & Balch.
- July 24. Death of Zadoc A. Gallup.
- Aug. 29. Death of Capt. E. Augustus Emmerton.
- Sept. 10. Fire at Central House; loss, \$12,000.
- Sept. 14. News of Pres. McKinley's death announced in Salem by fire alarm.
- Sept. 19. National mourning day. Memorial meeting held in Cadet hall.
- Nov. 28. Accident at Cadet shooting range to John Barry.
- Dec. 17. \$15,000 fire on Front street.
- Dec. 31. Whitney house on Loring ave. burglarized; over \$1,000 worth stolen.

1902.

Jan. and Feb. Slight epidemic of small pox.

Jan. 24. R. E. Pollock arrested for attempted bribery.

Feb. 1. Marshal Hart deposed.

Feb. 20. Fatal fire on Front street. Fireman Frank M. Godfrey killed by falling wall.

Feb. 21. Death of Arthur A. Averille.

March 5. Public stations for vaccinations instituted.

March 5. Edward H. Knight appointed city marshal.

April 3. Brown tail moth contest.

June 20. Death of Chas. B. Balcomb.

July 3. U. S. S. Hartford in Harbor.

July 14. Second church damaged by fire.

July 30. Visit of Sec. of Navy Moody.

July 27.-Aug. 2. First celebration of Old Home week.

Aug. 8. Death of Edward D. Ropes.

Aug. 21. Death of Elizabeth S. Archer, 100 years old.

Sept. 5. Opening of electric car route between Salem and Lawrence.

Oct. 7. Mrs. Geo. P. Ferguson killed by train near Castle Hill.

Oct. 18. Frank W. Wilson of Salem and John E. Foster of Beverly drowned in Beverly Cove.

Oct. 29. Death of Hon. William D. Northend.

Nov. 1. Senator George F. Hoar speaks in Salem.

Nov. 13. Body of John E. Foster recovered.

Nov. 21. Frye's Mill burned; loss, \$1,000.

Dec. 3. Gov. Crane and council voted to deposit Pickman silver at Essex Institute.

Dec. 9. Mayor Hurley defeated.

Dec. 14. Severe snow storm. Railway travel delayed.

Dec. 16. Robert Mason found dead in bath tub at Enterprise Social Club rooms.

Dec. 26. Eagle captured near Forest river.

Dec. 30. Death of Charles F. Pickering.

1902-1903. Dec., Jan., Feb., coal famine. Much suffering.

1903.

Jan. 6. Jesse A. Field appointed city marshal.

Jan. 20. Fire at Mass. Broken Stone Co's, Castle Hill; loss, \$3,000.

Jan. 26. John Cronin struck by train and instantly killed.



- Feb. 3. Death of ex-Chief Engineer Daniel B. Lord.
- Feb. 10. Charlotte Fairfield announces herself an independent coal dealer.
- Feb. 11. Death of James Welch.
- Feb. 18. Death of John Battis.
- March 3. National Banks establish savings departments.
- March 7. Employee at Naumkeag Mills loses scalp in machinery.
- March 11. Floating Bridge condemned and closed to travel.
- March 21. Escape of Jack Curtin from Salem Jail.
- March. Resignation of E. P. Farnham from pastorate of First Baptist church.
- April 6. General strike of carpenters and painters.
- April 29. Theory of Old First church being the first church erected in 1635 proved to be false.
- May 13. Alexander Berube killed at Naumkeag Mills.
- May 13. Death of Dr. Solomon H. Holbrook.
- May 15. Charles Nordine killed at Amer-Hide and Leather Co. factory.
- May 17. Enlarged Salem Hospital opened.
- May 26. Sudden death of Juror Thomas E. Cutter at Court House
- May 27. Death of Owen B. Stone, principal of Saltonstall school.
- May 30. Death of Miss Eliz. P. Knight, High school teacher.
- June 1. Col. Peck retires from Cadets.
- June 3. Yellow day.
- June 16. Death of Councilman W. H. Fullam.
- June 17. Degree of D. D. conferred by Tufts College on Rev. Chas. H. Puffer.
- June 23. Farewell reception to Rev. John W. Buckham, pastor of Crombie street church.
- June 27. Death of J. Shove Symonds.
- June 28. Death of Charles F. Fillebrown.
- June 29. Andrew Fitz elected Lt. Col. Second Corps Cadets.
- June 30. Charles H. Stanton killed by fire engine.
- June 30. Mulligan factory burned.
- July 7. Wm. H. Jelly resigns presidency of Five Cents Savings Bank.
- July 29. Explosion of dynamite at Lowell distinctly felt in Salem.
- July 31. John Hogan killed by train.
- Aug. 17. Death of Joseph F. Dane.
- Aug. 20. N. E. Veteran Firemen's League muster.
- Aug. 21. Unusual display of Northern Lights.
- Sept. 2. Death of Capt. Nathan A. Bachelder.
- Sept. 13. Dedication of Hebrew Synagogue,
- Sept. 29. Death of Miss Mary P. Ropes.
- Oct. 20. Death of Edward H. Knight.
- Oct. 26. New system of sewers begun.
- Oct. 27. Death of Charles B. Perkins.
- Nov. 1. Rev. Alexander Blackburn assumes pastorate of First Baptist church.
- Nov. 8. Death of Wm. A. Tiney.
- Nov. 9. Corner stone of new Calvary Baptist church laid.
- Nov. 12. Allen Reed drowned at Beverly.
- Nov. 21. Death of Dr. Charles A. Buxton.
- Nov. 25. Double tracking of Lafayette street.
- Dec. 1. Discovery of theft at postoffice and arrest of one of the clerks.
- Dec. 2. R. R. Commissioners order whistling as a crossing signal prohibited.
- Dec. 13. Brutal assault on Miss Mary Narbonne.
- Dec. 14. Death of Capt. Edward A. Simonds.
- Dec. 19. South church burned.
- Dec. 21. Death of Dr. S. F. Quimby.
- Dec. 22. Suicide of Thomas Perkins.
- Dec. 23. Gray nuns in Charge of St. Joseph's school called to Montreal. Sisters from France to take charge.
- Dec. 26. Fire at Connelly's shoe factory.

## 1904.

- Jan. 1. State removes insane patients from almshouse to state institutions, saving city \$20,000 per annum.
- Jan. 2. D. M. Little appointed collector of port.
- Jan. 5. Deaths of Albert J. Lowd and Joseph F. Pitman.
- Jan. 7. Burglary at S. E. Cassino's.
- Jan. 8. Death of Dr. John H. Batchelder.
- Jan. 14. Death of Mrs. Cath. Thornton, aged 103.
- Jan. 15. Burglary at North street depo
- Jan. 23. Death of Deacon Edmund Caswell, aged 94.
- Jan. 25. Death of Needham C. Millett.
- Feb. 4. Resignation of Father Tierney from Church of Immaculate Conception.
- Feb. 5. Death of John J. Hartigan.
- Feb. 10. Rev. T. J. Murphy takes charge of church of Immaculate Conception.
- Feb. 16. Huge drifts at Gardner's Hill. 100 men unable to keep electric road open to travel.
- Feb. 20. Death of George A. Collins
- March 2. Death of Richard C. Manning.
- March 3. Funeral of Father Vermette, curate of St. Joseph's church.

- March 18. Death of ex-Alderman Miles J. Daley.
- March 19. Omer Francoeur drowned in Palmer's Cove.
- March 21. Earthquake at 1.05 A. M. Most distinct for many years.
- March 23. Burning of mortgages at Wesley church.
- March 26. Death of Snow Rich.
- March 27. Wilson Chamberlain, missing since March 23, found dead near Thompson's Meadows.
- April 2. Death of Miss Margt. Dalrymple, aged 93.
- April 5. Mrs. Emma Brown of Beverly instantly killed at entrance to tunnel.
- April 7. Death of Capt. Chas. W. Gilbert, veteran of Mexican and Civil wars.
- April 7. Death of Wm. F. M. Collins.
- April 21. Death of Rev. J. O. Gadoury at Sharon Springs, N. Y.
- April 22. Death of ex-Chief Engineer James A. Lord.
- April 28. George F. Ashton elected first city engineer.
- May 12. Death of James E. Trask.
- May. Resignation of James F. Brodie as pastor of South church.
- May 17. New Calvary Baptist church dedicated.
- June 1. Death of Elizabeth T. Larkin.
- June 5. Death of Capt. Chas. H. Elwell.
- June 14. Drowning of Arthur Stamper and Harold A. Fuller.
- June 22. Severe storm. Trees uprooted and much damage.
- June 23. Hawthorne centennial observed by Essex Institute.
- July 6. Resignation of Robert S. Rantoul, president of Essex Institute.
- July 8. Salem water debt of \$398,500 paid.
- July 12. County commissioners fix location of new bridge, Rial Side; to be called Endicott bridge.
- July 13. Gen. Francis H. Appleton of Peabody elected president of Essex Institute.
- July 20. Death of Henry D. Johnson.
- Aug. 1. Severe thunder shower. Much damage at Salem Willows.
- Aug. 3. Wreck of steamer Monohansett on Misery Island.
- Aug. 4. Death of Capt. Asa B. Perkins.
- Aug. 10. Standard Barrel Co., Derby wharf, burned out; loss, \$3,000.
- Aug. 13. Work begun on North Bridge.
- Aug. 22. Death of Dr. Harriet R. Goodrich, from injuries sustained from jumping from electric car.
- Aug. 22. Death of Horace A. Brooks.
- Sept. 10. Closing of store of I. P. Harris Co.
- Sept. 18. Fatal yachting accident in harbor. Two young men drowned.
- Sept. 22. \$2,000 loss by fire at store of Herman Harris, Harbor street.
- Sept. 23. Resignation of Rev. Samuel B. Nobbs of Central Baptist church.
- Sept. 26. Formal opening of newly finished rooms in Y. M. C. A. building, and reception to Miss Helen Gould.
- Oct. 15. Rev. Charles R. Crosset begins pastorate of Advent church.
- Oct. 24. Silver house, Brown street, entered by burglars.
- Nov. 2. Party of "Salem Witches" injured in trolley crash at North Andover.
- Nov. 3. Frank Fossa's house, Creek street, gutted by fire.
- Nov. 17. Death of James B. Gifford.
- Dec. 3. 275th anniversary of First church celebrated.
- Dec. 3. Sale of Merritt Express Co. to Munroe & Arnold.
- Dec. 5. Sudden death of Hon. Henry P. Moulton.
- Dec. 8. Death of Lewis B. Moody.
- Dec. 10. Edwin A. Merrill killed in freight yard.
- Dec. 22. Death of Amanda Bailey.
- Dec. 24. Death of John P. Langmaid.
- Dec. 25. Centennial observance at First Baptist church.

1905.

- Jan. 9. Joseph A. Hastings pleads guilty to murder of Mrs. Dora Trask in second degree.
- Jan. 10. Death of Henry A. Cook.
- Jan. 18. County commissioners acquire seven estates for new court house. at cost of \$50,000.
- Jan. 21. Death of Jonathan Brown.
- Jan. 24. Patrick A. Kelley elected street commissioner.
- Jan. 25. Brady shoe factory burned; loss, \$20,000.
- Jan. 31. Peabody building gutted by fire.
- Feb. 4. Mechanic Hall destroyed by fire; loss, \$58,000.
- Feb. 16. Fire at gas house; coal burned for one week.
- Feb. 21. Salem Gas Co. fined \$100 for furnishing inferior gas.
- Feb. 22. Salem Light Infantry observed its 100th anniversary.
- Feb. 27. David N. Cook elected superintendent of water works.
- March 1. Reception to Gen. Nelson A. Miles at Cadet Armory.
- March 1-3. Bill to appropriate \$60,000 for improvement of Salem Harbor passed by Congress.
- March 5. Death of Charles Higbee.

- March 9. Death of Capt. Nathan Hardy Millett.
- March 11. Rufus P. Archer, jr., brutally assaulted.
- March 16. The Babies' Summer Hospital Society incorporated.
- March 19. Ernest Goodspeed held up and robbed.
- March 21. Death of Miss Mary Narbonne.
- March 28. Closing of Cadet Armory to public events ordered by adjutant general.
- April 2. Rev. Milton F. Negus begins pastorate of Central Baptist church.
- April 11. First fatal case of spotted fever.
- May 15. New court house bill passed Senate.
- May 18. Mechanic Hall stockholders voted to sell.
- May 21. 100th anniversary of Universalism observed.
- May 31. Death of George W. Williams.
- June 1. 23d Regiment boulder placed in position.
- June 11. Thomas Brown drowned at Baker's Island.
- June 14. Blake Memorial Chapel dedicated.
- June 26. Terrific storm. Edward P. Osgood drowned at Baker's Island. Trees at Willows seriously damaged.
- June 27. Resignation of Miss Ellen M. Dodge as teacher at State Normal School, after 50 years of service.
- June 30. Capt. Edgar J. Whelpley appointed postmaster of Salem.
- July 4. \$3,000 fire in building belonging to Gardner estate.
- July 11. Work started on out-fall sewer.
- July 13. John H. Broadley killed by electric car.
- July 15. Earthquake shock felt in Salem.
- July 18. H. M. Whitney sold Loring farm property.
- Aug. 5. Sale of buildings to make place for new court house.
- Aug. 28. Visit of Hon. Jos. H. Choate.
- Sept. 2. Death of Judge Safford.
- Sept. 10. Address by Hon. Seth Low in connection with Infantry celebration.
- Sept. 11. Centennial celebration of Salem Light Infantry.
- Sept. 28. 23d Regiment boulder dedicated.
- Oct. 3. Break in water main, cor. Winter and Bridge sts., causing damage of \$5000.
- Oct. 3-7. Meeting of Mass. Interdenominational Sunday School Assoc.
- Oct. 4. George B. Sears, Esq., appointed justice of 1st Dist. Ct.
- Oct. 9. Sale of Plummer Hall to Essex Institute.
- Oct. 14. Death of Prof. Walter P. Beckwith.
- Nov. 2. Schooner Ruth Robinson ashore on Half Tide Rocks.
- Nov. 9. Purchase of Benson estate by Now and Then Assoc.
- Dec. 6. \$5,000 fire at 40 Central st.
- Dec. 22. Resignation of Principal Edwin R. Bigelow of Phillips school.
- Dec. 30. Crombie St. Church voted to unite with South Church.

## 1906.

- Jan. 4. J. Asbury Pitman appointed principal of Salem Normal School.
- Jan. 5. Death of City Treasurer Francis A. Newell.
- Jan. 11. Capt. William A. Hill elected city treasurer.
- Jan. 15. Mrs. Rebecca A. Greene bequeathed \$100,000 in trust to Salem Hospital, to be known as the Browne fund, in remembrance of Charles Allen Browne.
- Jan. 18. Stuart E. Kendall killed in elevator well in Hale block.
- Jan. 29. Mrs. Dennis J. Hagerty and Mrs. Daniel T. Hagerty killed at Forest river crossing.
- Jan. 31. One man killed and five injured in dynamite explosion on Highland ave.
- Feb. 3. Residence of Frank H. Bray burglarized.
- Feb. 14. Death at Cincinnati of Col. Arthur F. Devereux.
- Mch. 10. Guy Cowperthwaite electrocuted by live wire on Canal st.
- Mch. 12. Now and Then Assoc. opened their new home on Washington sq.
- Apr. 16. Brookhouse estate purchased by Masonic fraternity.
- Apr. 16. Death of Rev. Alfred P. Putnam.
- Apr. 25. Winne-Egan Hotel destroyed by fire.
- May 24. First car run over Highland ave. line to Boston. Opened for business May 28.
- June 12. Fire in Stanton and Gifford blocks. Loss, \$20,000.
- June 12. Bold assault on young girl on Willows rd.

# EVENTS OF GENERAL INTEREST

## 1905-1906

1905.

Jan. 1. Surrender of Port Arthur after a siege of 7 months, 26 days.

Jan. 2. Death of Chief Justice Albert Mason of Mass. superior court.

Jan. 5. William L. Douglas inaugurated Governor of Massachusetts.

Jan. 7. Gen. Miles assigned by War Dept. to staff of Gov. Douglas of Massachusetts.

Jan. 9. Carnegie donates \$100,000 to Tufts College for a library.

Jan. 17. Henry Cabot Lodge and W. Murray Crane elected U. S. Senators by legislature.

Jan. 18. End of Fall River strike through mediation of Gov. Douglas. Lasted 6 months.

Jan. 22. Massacre of strikers at St. Petersburg.

Jan. 24. Verdict in Tucker trial of murder in first degree.

Jan. 27. Trial run over Cape Ann course of cruiser Maryland.

Feb. 8. Aged King Oscar of Norway and Sweden leaves throne, turning over government to Crown Prince Gustavus.

Feb. 10. Italian training ship Amerigo Vespucci, arrives in Boston harbor.

Feb. 15. Death of Gen. Lew Wallace at Crawfordsville, Ind.

Feb. 17. Statue of Frances E. Willard unveiled in Statuary Hall, Capital building, Washington.

Feb. 17. Grand Duke Sergius assassinated at Moscow.

Feb. 19. \$1,000,000 fire at Indianapolis.

Feb. 19. Rev. W. J. Dawson, English divine, begins evangelistic work in Boston.

Feb. 21. Fire destroyed piers at Hoosac tunnel docks; loss, \$1,500,000.

Feb. 25. \$2,000,000 fire at Hot Springs, Ark.

Feb. 27. Loss, by fire, at New Orleans over \$5,000,000.

Feb. 27. Former Gov. Boutwell died.

Feb. 28. President signed resolution to return captured Confederate flags.

March 3. Appalling railroad disaster near Pittsburg.

March 4. Inauguration of Pres. Roosevelt at Washington.

March 5. Arrival at New York of new Cunarder, Caronia.

March 7. \$100,000 fire at Madison Square Garden.

March 12. News of destruction by fire of famous hospice St. Gothard in Swiss Alps.

March 13. Mrs. Cassie L. Chadwick of Cleveland, O. charged with borrowing several hundred thousand dollars on worthless securities, found guilty.

March 19. Collapse of five buildings in New York in process of construction.

March 20. Explosion in R. B. Grover Shoe Co's factory at Brockton causes great loss of life.

March 21. Congregational ministers oppose acceptance of Rockefeller's gift \$100,000.

March 22. Death of Elmer H. Capen, President of Tufts College.

March 23. Launching at Bucksport, Me., of Peary's vessel, Roosevelt, for his Arctic expedition.

March 24. Death of Jules Verne, at Amiens, France.

March 26. New monetary system of Mexico, on gold basis, to go into effect May 1.

March 31. King of Italy gives farewell audience to Ambassador Meyer and wife.

April 2. Traffic in Simplon Tunnel, through the Alps, inaugurated.

April 7. American Baptist Missionary Union accepts gift of \$100,000 from John D. Rockefeller.

April 8. "Merrimac," largest of U. S. modern battleships, launched at Newport News.

April 10. Second donation of \$100,000 from John D. Rockefeller to American Baptist Union.

April 14. Bill signed by Gov. Douglas allowing renting militia armories in cases of emergency and public uses.

April 15. The body of Admiral John Paul Jones discovered in Paris.

April 15. Fraud order issued against Ubero Plantation Co. of Boston.

April 21. St. Anne's convent St. Genevieve, near Montreal, burned.

April 22. Arrival at Boston of new White Star liner Arabic.

April 23. Death of Joseph Jefferson.

- April 24. Frank G. Bigelow, defaulting bank president of Milwaukee, Wis., confesses indebtedness to \$2,000,000 or \$3,000,000.
- April 27. Announcement of gift of \$10,000,000 from Carnegie to provide annuities for superannuated college professors.
- April 29. Sudden death of Gen. Fitzhugh Lee.
- May 17. First conviction of a Christian Scientist, in Canada.
- May 19. First centennial celebration of Knights Templar in Boston.
- May 23. Death of Mrs. Mary A. Livermore at Melrose.
- May 23. Collision on elevated railroad at New York.
- May 25. Death of William Ziegler
- May 25. Gov. Douglas vetoed veterans gratuity bill.
- May 29. Russian fleet under Rojestvensky destroyed by Japanese fleet under Togo.
- May 30. Hon. Joseph H. Choate retires as American Ambassador to Great Britain.
- June 1. Attempt to assassinate King Alfonso of Spain.
- June 1. Opening of the Lewis & Clark centennial exposition at Portland, Ore.
- June 1. Victory of the yacht Atlantic in ocean yacht race for Emperor Williams' gold vase.
- June 2. Death of J. Montgomery Sears.
- June 3. \$75,000 fire at Revere beach.
- June 7. Vote of M. I. T. graduates against proposed alliance with Harvard.
- June 7. Union between Norway and Sweden dissolved. Norway becomes an independent and sovereign state.
- June 8. Unsuccessful attempt to assassinate Vice-Pres. Fairbanks at Flint, Mich.
- June 13. Death of Baron Nathaniel de Rothschild at Vienna.
- June 18. Dr. Mann begins ministry at Trinity church, Boston.
- June 21. Wreck of eastbound Twentieth Century Limited at Mentor, O.
- June 22. Pres. Roosevelt received L. L. D. from Clark University, Worcester.
- June 22. New building of Lowell General Hospital opened. Gift of Fred'k H. Ayer.
- June 24. Mt. Vesuvius in eruption.
- June 26. New England visited by cyclonic storm.
- June 28. Hon. Joseph H. Choate chosen pres. of Harvard Alumni.
- June 28. Bust of James Russell Lowell unveiled at Harvard.
- June 29. \$1,000,000 gift to Yale from John D. Rockefeller.
- June 29. Harvard's teachers' endowment fund amounts to 2,400,000.
- July 1. Death of John Hay, Sec'y of State.
- July 5. General encampment of Mass. militia at Westfield.
- July 8. Indictment against 14 men connected with beef packing industries.
- June 16. Death of Gen. W. W. Blackmar.
- July 16. Departure of Lieut. R. E. Peary for the North Pole.
- July 22. Boiler explosion on U. S. gunboat Bennington, 38 killed, many injured.
- July 22. Henderson's pt., Portsmouth, N. H. removed by dynamite explosion.
- July 29. Bursting of reservoir dams at Bridgeport, Conn. \$500,000 damage.
- Aug. 5. U. S. government takes control of yellow fever situation at New Orleans.
- Aug. 9. Peace conference at Portsmouth, N. H. begun.
- Aug. 21. Resignation of Lord Curzon, as viceroy of India.
- Aug. 21. Death of Mary Mapes Dodge, editor of St. Nicholas.
- Sept. 1. New light house on The Graves, outside Boston Harbor, lighted for first time.
- Sept. 2. Death of Judge Daniel E. Safford at Hamilton.
- Sept. 5. Treaty of peace signed by Russian and Japanese envoys.
- Sept. 5. Death of Hezekiah Butterworth.
- Sept. 11. Elevated train in N. Y. city left rails and plunged to street below, 14 killed.
- Sept. 13. Admiral Togo's flagship, Mikasas, burned, 250 lives lost.
- Sept. 14. Death of Mayor Patrick A. Collins of Boston.
- Sept. 27. Typhoon at Manila. Many homeless.
- Sept. 30. Battleship Mississippi launched.
- Oct. 2. Attempt on life of Pres. Palma, of Cuba.
- Oct. 3. Death of Judge J. M. Barker.
- Oct. 11. Judge H. N. Sheldon nominated to fill vacancy caused by death of Judge Barker.
- Oct. 13. Death of Sir Henry Irving at London.
- Oct. 13. Gloucester fishermen forbidden to fish for herring at Bay of Islands, N. F.
- Oct. 14. Ratification of peace treaty between Russia and Japan.
- Oct. 16. Closing of Lewis & Clark exposition.

- Oct. 17. Sec. Root sustained fishermen's claims at N. F.
- Oct. 27. Norway recognized by Sweden as a separate state
- Oct. 31. Emperor Nicholas of Russia resigns the autocratic powers of the Czar.
- Nov. 1. British squadron at Annapolis.
- Nov. 7. John B. Moran elected district attorney.
- Nov. 9. British squadron at New York.
- Nov. 18. Prince Charles, becomes king of Norway.
- Nov. 18. Opening of leper colony at Penikese Island.
- Nov. 19. Steamer Hilda sunk in English channel.
- Nov. 27. Rear end collision of Montreal express and Marlboro local at Baker's Bridge.
- Nov. 29. Three big steamers on the great lakes driven ashore at entrance to Duluth harbor.
- Dec. 1. Gen. Luke E. Wright retires as civil governor of the Philippines.
- Dec. 5. Resignation of the British Conservative ministry.
- Dec. 6. Collapse of Charing Cross station at London.
- Dec. 7. Bill for separation of church and state adopted by French Senate.
- Dec. 8. Execution of Mrs. Mary Rogers.
- Dec. 11. Lightship 58 sunk.
- Dec. 13. Resignation of Pres. Pritchett of Technology.
- Dec. 16. Dedication of Hutchinson High Rock Peace tower.
- Dec. 18. Failure of three Chicago banks.
- Dec. 25. Slaughter, riot and anarchy at Moscow.
- 1906.
- Jan. 11. Death of William R. Harper, L. L. D., pres. of Chicago University.
- Jan. 17. Death of Marshall Field of Chicago at New York.
- Jan. 19. Petition of 30,000 Mass. citizens to house of representatives for preservation of the frigate Constitution.
- Jan. 19. Pulsifer block at Manchester destroyed by fire.
- Jan. 23. Destruction of Brazilian ship Aquidaban by powder explosion, 212 killed.
- Jan. 26. Simplon tunnel opened to travel.
- Jan. 26. Death of Gen. Joseph Wheeler at Brooklyn, N. Y.
- Jan. 29. Death of King Christian IX. at Copenhagen.
- Feb. 1. Gen. Chaffee retired.
- Feb. 15. Leyland liner Devonian ashore at Scituate.
- Feb. 17. Marriage of Miss Alice Roosevelt and Representative Nicholas Longworth of Ohio.
- March 3. Tornado at Meridian, Miss. 400 injured.
- Mch. 5. Death of Lieut.-Gen. John M. Schofield, U. S. A. retired.
- Mch. 12. Mine disaster in France. 1100 dead.
- April 11. Mt. Vesuvius again in eruption.
- April 13. Greene and Gaynor found guilty of conspiracy in connection with government engineering works. Fine, \$575,794.90 and four years imprisonment.
- Apr. 14. Corner-stone of \$3,000,000 office bldg. for house of representatives laid.
- Apr. 18. Severe earthquake at San Francisco. Appalling loss of property. Waterworks damaged. Conflagration followed. Loss estimated at \$350,000,000.
- Apr. 23. Earthquake at Portland, Ore.
- Apr. 25. Sepulture of body of Admiral John Paul Jones at Annapolis with impressive ceremonies.
- Apr. 26. Another earthquake at San Francisco.
- Apr. 27. Loss of fishing schooner Norumbega of Gloucester.
- Apr. 27. Unveiling of statue of Benjamin Franklin at Paris.
- Apr. 30. Arrest in Paris of three men charged with conspiracy to overthrow the republic.
- May 3. Resignation of Premier Witte accepted.
- May 8. The award of the strike commission continued for another three years, dating from April 1, 1906.
- May 10. Opening of the first parliament in Russian history.
- May 11. Arrest of City Treas. James V. Felker of Newburyport.
- May 14. Death of Carl Schurz.
- May 18. Tidal wave at Cape Ann.
- May 21. Assassination of W. H. Stuart, American vice-consul at Batoum, Russia.
- May 23. Death of Henrik Ibsen.
- May 29. Death of Judge Elisha B. Maynard of the superior court.
- May 31. Opening of Wonderland.
- May 31. Death of Michael Davitt, at Dublin.
- May 31. Maxime Gorky in Boston.
- May 31. Marriage of King Alfonso of Spain and Princess Ena of Battenberg, niece of King Edward of England.
- June 4. Electric car overturned at East Providence.

# American Loan and Trust Company

53 STATE STREET, - - - BOSTON, MASS.

Capital, - - - \$1,000,000  
Surplus Earnings, - \$1,700,000

## BOARD OF DIRECTORS:

<i>C. F. Adams, ad</i>	<i>Gordon Dexter</i>	<i>Lester Leland</i>
<i>F. Lothrop Ames</i>	<i>William B. Driver</i>	<i>S. E. Peabody</i>
<i>Hobart Ames</i>	<i>E. C. Dumaine</i>	<i>Francis Peabody, Jr.</i>
<i>Edwin F. Atkins</i>	<i>Eugene N. Foss</i>	<i>Royal Robbins</i>
<i>Frederick Ayer</i>	<i>Wm. A. Gaston</i>	<i>Henry A. Rueter</i>
<i>Charles S. Bird</i>	<i>Elmer P. Howe</i>	<i>P. L. Saltonstall</i>
<i>George W. Brown</i>	<i>N. W. Jordan</i>	<i>R. Paul Snelling</i>
<i>A. G. Bullock</i>	<i>David P. Kimball</i>	<i>Frank W. Stearns</i>
<i>Samuel Carr</i>	<i>John Lawrence</i>	<i>Eugene V. R. Thayer</i>
<i>Gilmer Clapp</i>	<i>Charles W. Whittier</i>	

## EXECUTIVE COMMITTEE:

<i>Samuel Carr</i>	<i>N. W. Jordan</i>	<i>E. V. R. Thayer</i>
<i>William A. Gaston</i>	<i>Philip L. Saltonstall</i>	<i>Charles W. Whittier</i>
	<i>Frank W. Stearns</i>	

<b>N. W. JORDAN,</b>	President	<b>EDWARD A. COFFIN,</b>	Treasurer
<b>CHARLES L. BURRILL</b>	Vice-President	<b>CHARLES H. BOWEN,</b>	Secretary
<b>JAMES H. PERKINS,</b>	Vice-President	<b>GEO. W. AURYANSEN,</b>	Asst. Sec'y

INTEREST ALLOWED ON DEPOSITS SUBJECT TO CHECK.  
SPECIAL RATES ON TIME DEPOSITS.

OUR STOCK COMPRISES EVERY VARIETY OF

# Foreign and Domestic Groceries

Flour, Teas, Coffee and Canned Goods.

SEND FOR  
COMPLETE  
PRICE  
LIST.



ALL GOODS  
BOXED  
FREE  
OF CHARGE.

Send for our Complete Price List,

## THE GOURMET

MAILED FREE FOR THE ASKING.

### OLD CALIFORNIA WINES

OLD AND FRUITY. **\$1.00 per Gallon.** PURE GRAPE JUICE.

Port, Sherry, Angelica, Muscatel and Tokay.

WE CARRY ALL THE WELL KNOWN LEADING BRANDS OF

### IMPORTED and DOMESTIC WINES and LIQUORS.

WHISKEYS.		per gal.	WINES.		per gal.
<i>Cream of Louisville (12 years old)</i>		\$6.00	<i>Alto Douro Port (very old)</i>		\$5.00
<i>Hazel Valley Special Rye</i>		5.00	<i>Old Oporto Port (fruity)</i>		4.00
<i>Hazel Valley Rye (8 years old)</i>		4.00	<i>Burgundy Port</i>		3.00
<i>Sherwood Club Rye</i>		4.00	<i>Tarragona Port</i>		1.75
<i>Old Promingo Rye</i>		3.00	<i>Oloroso Sherry (very rich)</i>		5.00
<i>Old Darling Club Rye</i>		3.00	<i>Duff Gordon Sherry</i>		4.00
<i>Old Jackson Bourbon</i>		2.00	<i>Manzanilla Sherry</i>		3.00
<i>Medford Rum (very old)</i>		4.00	<i>Palido Sherry</i>		2.00
<i>Medford Rum (4 years old)</i>		3.00	<i>Old Madeira (very rich)</i>		4.00
<i>Good Old Rum</i>		2.00	<i>Sicily Madeira (Woodhouse)</i>		2.00

Bass' Ale, Guinness' Porter, Malt Extracts, Cordials, Bitters and Mineral Waters.

## WARREN F. WITHERELL CO.

IMPORTERS AND GROCERS.

91 CAUSEWAY STREET,

Opp. North  
Union Station.

BOSTON, MASS.