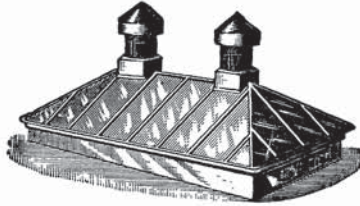


DOUGLAS & HAYES



PROPERTY OF THE

Received December 1917 No. 45706

ers
fing
ON
OF

ALL WORK WARRANTED

REPAIRING PROMPTLY ATTENDED TO
ORDERS SOLICITED FROM ALL PARTS OF ESSEX COUNTY

TELEPHONE 911-W

Office and Yard

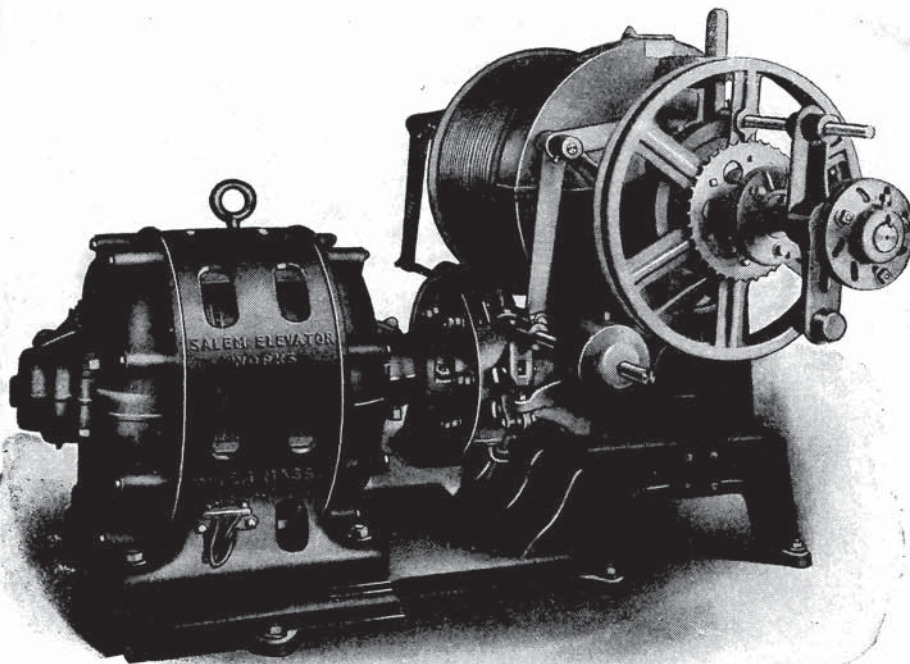
287 BRIDGE ST., SALEM, MASS.

Salem Elevator Works

**ELECTRIC, BELT AND HAND POWER
PASSENGER AND FREIGHT**

ELEVATORS

A Full Line of "Safety First" Appliances. Elevator Cables,
Automatic Folding Hatch Doors, Safety Gates, etc.
Repairing and Inspecting a Specialty



SEND FOR ILLUSTRATED CATALOGUE

Corner Canal Street and Broadway

SALEM, MASSACHUSETTS

Wm. G. Webber Co
SALEM, MASS

Wm. G. Webber Co
SALEM, MASS

The New Corner Store in Town House Square
Auto and Carriage Entrance on Washington Street



ESSEX COUNTY'S LEADING STYLE STORE

Women's and Children's Outfitters from "Head to Foot"
All Electric Cars Stop at Our Door

Only Two Minutes' Walk from the Boston & Maine Station

'Phone 1280 with Exchange connecting Every Department
Mail Orders Receive Prompt Attention

The Store in the Square

The Store "On the Square"

Eagle Iron Foundry

(INCORPORATED)

ALBERT F. SMITH

Pres & Treas.

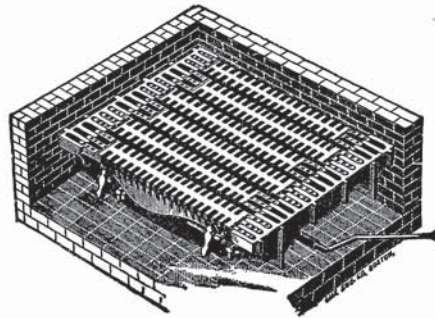
Manufacturers of

Smith Patent Grate Bars

—AND—

Hub Patent Shaking Grate

GRATES FOR ALL KINDS OF FUEL
CONSTANTLY ON HAND



**Also all kinds of Machinery and Building Casting
and Mouthpieces for Steam Boilers**

JUNCTION OF CANAL AND POND STREETS,
SALEM, MASSACHUSETTS

Telephone 227-W

THE
MORRIS
PLAN

THE
MORRIS
PLAN

THE SALEM MORRIS PLAN CO.

125 Washington Street Town House Square
SALEM, MASS.

CAPITAL \$50,000.

OFFICERS

George R. Jewett, President
George A. Morrill, Vice Pres.
Silas Boyes, Vice Pres
Carl F. A. Morse, Treasurer & Manager

BOARD OF DIRECTORS

Henry P. Benson	John J. Mack
Silas Boyes	Robert M. Mahoney
W. Herrick Brown	Frederick N. Moore
John F. Cabeen	George A. Morrill
William F. Cass	Carl F. A. Morse
William D. Chapple	Wm. S. Nichols
Wallace A. Chisholm	Vincent S. Peterson
Leland H. Cole	Arthur H. Phippen
Dan A. Donahue	George W. Pickering
George R. Felt	George W. Pitman
Wm. S. Felton	Emile Poirier
H. P. Gifford	John C. Robson
Josiah H. Gifford	Nathaniel G. Simonds
William H. Gove	E. G. Sullivan
Henry A. Hale	A. P. Thompson
Gardner R. Hathaway	George H. Vose
G. W. Hooper	C. R. Washburn
Harry E. Jackson	S. Herbert Wilkins
George R. Jewett	James Young, Jr.
Christian Lantz	

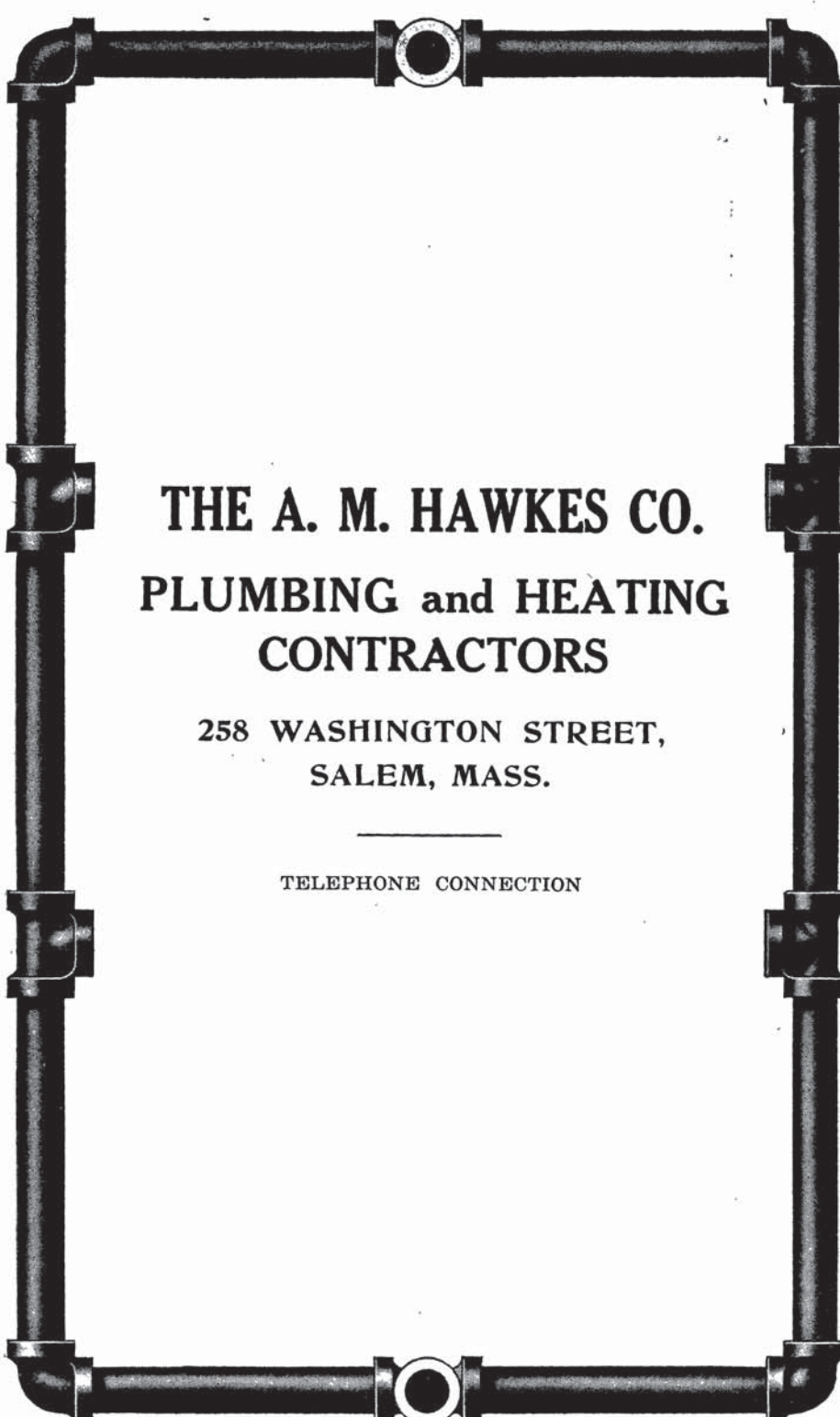
"CHARACTER IS THE BASIS OF CREDIT"
LOANS,—repayable on easy terms, made on the basis of character, to wage earners, salaried employees, business men and the general public.

This Company loans you money at reasonable rates and permits you to make weekly payments that may be used to repay the loan when it falls due.
Call or write for booklet explaining the plan.

OFFICE HOURS—8.30 A. M. to 3 P. M. Daily
Thursdays 8.30 A. M. to 8 P. M.
Saturdays 8.30 A. M. to 1.30 P. M.

THE
MORRIS
PLAN

THE
MORRIS
PLAN



THE A. M. HAWKES CO.
PLUMBING and HEATING
CONTRACTORS

258 WASHINGTON STREET,
SALEM, MASS.

TELEPHONE CONNECTION



Almy, Bigelow & Washburn

INCORPORATED

ESSEX COUNTY'S GREATEST STORE

35 Complete Stores under one roof
Broad and Daylight Aisles

Perfect Ventilation System and Excellent Delivery Service
to all parts of Essex County by Auto and team, or
Parcel Post, make this an ideal shopping
Mecca for North Shore Residents

The test of this store's capabilities is best seen
in the fullness and completeness of its stock

184-196 ESSEX STREET

Salem, Mass.

Cor. CABOT and FEDERAL STS.
BEVERLY, MASS.

Pleasant St., Gloucester, Mass.



Naumkeag Trust Co.

217 ESSEX STREET

Capital \$250,000

Surplus and Profits \$180,000

SUCCEEDING

Salem National Bank, 1803
Asiatic National Bank, 1824

Mercantile National Bank, 1826
Naumkeag National Bank, 1831

DIRECTORS

George H. Allen
Henry P. Benson
Walter K. Bigelow
Leland H. Cole
Stephen J. Connolly
Walter T. Creese
Eugene J. Fabens

Herbert Humphrey
William L. Hyde
Patrick J. Lynch
Robert M. Mahoney
Francis Peabody
George W. Pickering
Frederic G. Pousland

Charles B. Price
Charles S. Rea
Matthew Robson
Nathaniel G. Simonds
Ira Vaughan
S. Herbert Wilkins
Charles I. Wilkinson
James Young, Jr.

OFFICERS

EUGENE J. FABENS - *Président*
LELAND H. COLE - *Vice President*
WILLIAM O. CHAPMAN - *Treasurer*
GEORGE A. VICKERY - *Secretary*
JOHN G. WATERS - *Assistant Treasurer*
ELMER A. DRESSER - *Assistant Treasurer*

CLARENCE H. MILLETT, Vault Officer
J. EDWIN AUSTIN, First Paying Teller
MAURICE L. HOPKINS, Second Paying Teller
CHARLES F. GRUSH, First Receiving Teller
PERCY A. WELSH, Second Receiving Teller
DANIEL L. HODGKINS, Assistant Teller
PERCIVAL WILDES, Assistant Teller
WALDO D. GARDNER, Collection Clerk

EDWIN F. WOODMAN, Auditor
ALFRED NEWHALL, Bookkeeper
HARRY R. TYLER, Bookkeeper
AARON B. COOSE, Bookkeeper
HAROLD G. MACOMBER, Bookkeeper
RACHEL C. KERANS, Assistant Bookkeeper
LUCIENNE M. BEAUDRY, Clerk
PEARL L. GRANT, Clerk

GRACE E. PHILPOTT, Clerk
MABEL L. MARTIN, Acting Check Teller
EMMA C. MARTIN, Assistant Check Teller
ELMIRA L. TAYLOR, Stenographer
ELIZABETH M. ROWE, Stenographer
WINFRED J. POITRAS, Messenger
MILDRED E. COTTLE, Telephone Operator

ROLL OF HONOR

ALFRED I. SHATSWELL, 101st Reg. Field Artillery
CLARENCE J. PERKINS, 101st. Reg. Field Artillery

SALEM SAFE DEPOSIT And Trust Company

116 WASHINGTON STREET, SALEM, MASS.

NEXT TO THE POST OFFICE

Capital	-	-	-	\$200,000
Surplus	-	-	-	25,000

OFFICERS

MAJOR W. BARBER

President

CHARLES SANDERS

WILLIAM H. GOVE

Vice Presidents

BENJ. F. NASON

HARRY M. WILKINS

Treasurer

Asst. Treasurer

WILLIAM C. LONG

ALBERT W. TOWNE

Receiving Teller

Paying Teller

EMILE R. POIRIER

RALPH T. JENKINS

Bookkeepers

ALFONS F. FISCHER

Custodian Savings Dept.

HENRY P. DOWNING

ELLA M. CHANDLER

Collection Clerk

Check Teller

MARION P. HILL, Stenographer

JOSEPH McDERMOTT

Messenger

DIRECTORS

Major W. Barber

Forrest L. Evans

William H. Gove

Oscar E. Jackson

E. Kendall Jenkins

David I. Robinson

Charles Sanders

Accounts Solicited. Interest Allowed on Deposits Subject to Check.
Special Rates on Time Deposits.

UNITED STATES SECURITIES OF ALL KINDS AND
FOREIGN EXCHANGE



THIS TRADE-MARK IS
A GUARANTEE OF

::QUALITY::

....USE....



HAMPDEN CREAM

IT IS THE BEST

NOTE: This trade-mark cap is on every jar of pure,
heavy HAMPDEN CREAM



ALL HAMPDEN dairy products are put up under the
most sanitary conditions

Hampden Creamery Co.

EVERETT, MASS.

TEL. EVERETT 150



LYNN BRANCH

39 Pacific St.
Tel. Lynn 3640

DORCHESTER BRANCH

339 Codman St.
Tel. Milton 264





G. F. AMES & CO.

DESIGNERS AND BUILDERS OF

CEMETERY MEMORIALS

OFFICE: LYNN 1750

TELEPHONES

RESIDENCE, LYNN 4631

OFFICE AND WORKS
390-394 BROADWAY

LYNN, WASS.

FIFTY-NINTH YEAR

J. S. WATERMAN & SONS

INCORPORATED

UNDERTAKERS2326 and 2328 Washington St., Boston
(Adjoining Dudley Street Elevated Station)303 Harvard Street, Brookline
(Coolidge Corner)**Funeral, Cemetery, Cremation,
& Transfer Arrangements**

Chapels Extensive Salesrooms

Registered in Maine, New Hampshire
Vermont, Massachusetts and Connecticut*City and Out-of-Town Service—Carriage
and Motor Equipment*

DAY AND NIGHT MANAGEMENT

Frank S. Waterman, President
Joseph S. Waterman, Vice-President
Frank S. Waterman, Jr.Telephones Roxbury 72-73-74 Brookline 431
Telegraph and Cable Address
"Undertaker, Boston"

Obrion Russell & Co.

INSURANCE

of every description

108 Water Street

BOSTON - - - MASS.

Telephone 6600 Main

“THE ZONES”—Full Set, Thirty-one Strips Printed from 2200 Blocks



SCENIC WALL PAPERS

We Invite Your Inspection of Our Large and Complete
Line of the Choicest Foreign and Domestic Productions in

Upholstery and Drapery Work

PAINTING AND DECORATING

GREGORY & BROWN COMPANY

6 Hamilton Place, Boston

TEL. 526 FORT HILL

JOSEPH DUBE'S

Always Sweet **QUALITY** Always Clean

BREAD.

Wrapped direct from the oven to preserve
freshness and protect from impurities
Made Clean, Baked Clean, Sold Clean



PURITY — NUTRITION — CLEANLINESS

Absolutely applies to **QUALITY BREAD**. It is made from the highest standard of flour, milled from the choicest selections of **HARD WHEAT** renowned for the superior quality and quantity of gluten it contains.

QUALITY BREAD is the cheapest, because most nutritious. It is rich in flavor and retains its moisture for several days. It is made under the most sanitary rulings, hence the most cleanly.

**THE ABOVE FACTS ARE THE REASONS FOR THE GREAT POPU-
LARITY OF THIS CELEBRATED BREAD. IT IS GUARANTEED.**

"Purity and Cleanliness" our Motto.

Inspection of our Bakery Solicited.

Telephone 70

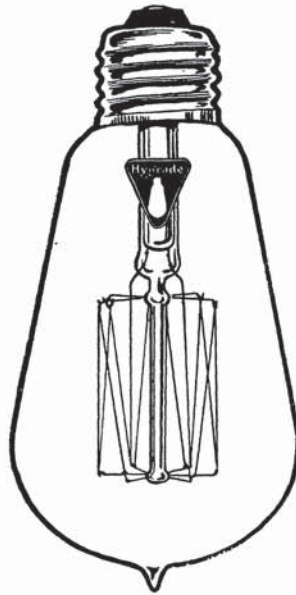
85 Leavitt St., Salem, Mass.

HYGRADE LAMP CO

GENERAL OFFICE
AND FACTORY



SALEM MASS



PROMPT DELIVERIES OF TUNGSTEN
VACUUM & GAS FILLED LAMPS IN
STANDARD PACKAGE QUANTITIES

FOR SALE IN LESS THAN STANDARD PACKAGES BY

LEE & OSBORN

126 WASHINGTON STREET, SALEM

J. P. Langmaid & Sons

≡≡≡ LUMBER ≡≡≡

FLOORING UNDER HEAT

A New Plant Centrally Located

Drain Pipe	Cement	Flue Lining
Fire Brick	Lime	Iron Columns
Hydrated Lime	Sand	Hard Plaster
Wall Board	Hair	Building Paper

Slate Covered Shingles

Bishopric Stucco Board

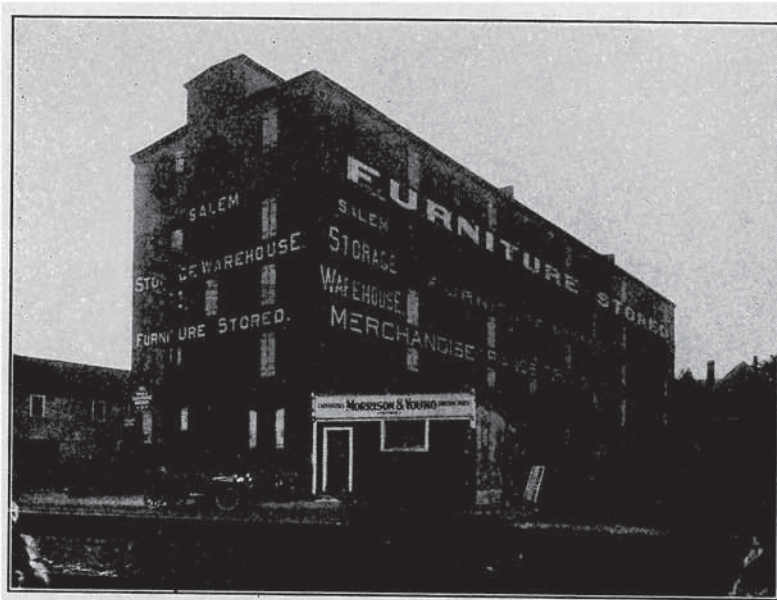
311 DERBY ST., - - SALEM

Telephone 840

SALEM STORAGE WAREHOUSE COMPANY

For Terms and Information Apply at Office to
E. B. TRUMBULL, Manager

Telephone 1003



STORAGE For FURNITURE, PIANOS, PICTURES, TRUNKS and MERCHANDISE in a New Five Story Brick Building, with all the modern equipments. ¶ Lowest Rates of Insurance. Separate Rooms of all sizes with locked doors. . . Spur track of the Boston & Maine Railroad delivers merchandise at our doors. . . A Large elevator takes a wagon loaded with furniture to any room in the building. Lowest rates compatible with proper storage.

295 Bridge Street, Above North Street

BEACHCOMBER DORY
BUILT BY
William H. Chamberlain



BUILDER OF

**Power Dories, Launches, Sailing and
Rowing Dories, Skiffs, Etc.**

14 ORNE STREET,

MARBLEHEAD, MASS.

Morrison & Young

General Contractors

— FOR —

BUILDINGS

OF ALL DESCRIPTIONS

oooooooo

Re-enforced Concrete Work

oooooooo

297 BRIDGE STREET
SALEM, MASS.

Telephone 150

Members of the North Shore Master Builders' Association

Hughes & Kingston Trucking Co.

WALL & WARMAN, Prop's

Furniture and Piano Movers

Also Packers of Household Goods and Office Furniture
China, Bric-a-brac, Cut Glass, Silverware, Antiques, Wedding Gifts, etc.

For Shipment to All Parts of the World



LONG DISTANCE MOVING A SPECIALTY

Trucking of All Kinds

29 New Derby St., - Salem, Mass.

Telephone 181

CHARLES F. MAURAS

CONTRACTOR
and BUILDER



Shop: 3 Dodge St. Ct.

**ALL KINDS OF JOBBING PROMPTLY
ATTENDED TO**

TELEPHONE 1849-M

Res. 5 Meadow Street,

-

Salem, Mass.

SALEM SAVINGS BANK

125 Washington Street, Salem, Mass.

OPPOSITE POST OFFICE

Incorporated 1818—The Second Savings Bank Incorporated in the United States

Assets, October 1, 1917	\$12,402,104.26
Deposits, “	11,129,898.88
Surplus and Undivided Profits Oct 1, 1917	1,204,163.67
Dividends Paid since 1818	17,226,856.35

President

Charles S. Rea

Vice Presidents

George H. Allen

Wallace A. Chisholm

George R. Jewett

William P. McMullan

George West

Trustees

Charles S. Rea

George H. Allen

George R. Jewett

George West

Robert Osgood

Wallace A. Chisholm

George W. Grant

Henry O. Fuller

William P. McMullan

George A. Vickery

John Pickering

Henry P. Benson

Frederic G. Pousland

George A. Morrill

William D. Chapple

George R. Felt

John J. Mack

Richard Wheatland

Robert M. Mahoney

Eugene J. Fabens

William E. Northey

Treasurer

James Young, Jr.

Clerk of Corporation

Frank S. Perkins

Finance Committee

Charles S. Rea

George R. Jewett

George H. Allen

Robert Osgood

Wallace A. Chisholm

**Deposits Commence Interest the Third Wednesday of January,
April, July and October**

Deposits Received and Accounts Opened by Mail

Dividends are Payable after the Third Wednesday of April & October

A Permanent Order May Be Registered and Dividends Mailed
Semi-annually.

Dividends in Recent Years Have Been at the Rate of 4 Per Cent

Hours: Daily from 8.45 a. m. to 1.15 p. m.

Saturday Evenings from 7 to 9

SERVICE

WE are at your service when you wish to consult directories throughout the United States & Canada. Our **DIRECTORY LIBRARY** of over 300 volumes is kept up for your convenience.

You may wish to find a person or a business firm in some distant state. Call or telephone us and we will gladly give you the desired information free of charge.



FREE INFORMATION LIBRARY

MAINTAINED BY

The Henry M. Meek Publishing Co.

12 Washington Sq., (West) - Salem, Mass.

Telephone 650

LAKE CROFT INN

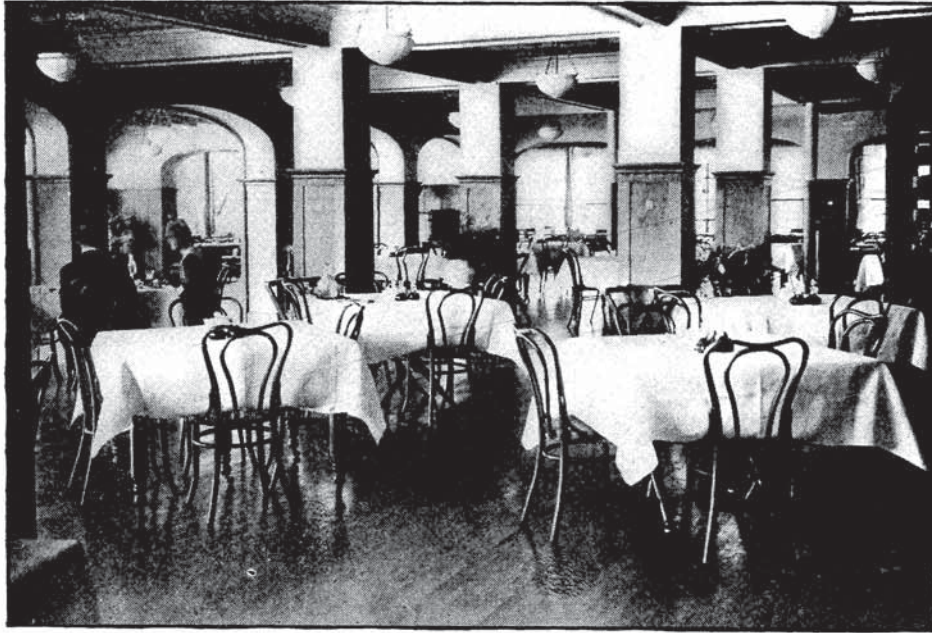
FORMERLY WINNEPAYKEN HOTEL

CHEBBACCO LAKE, HAMILTON, MASS.

JOHN C. RAUCH, Proprietor and Manager

Open the Year Round

Licensed Inn



The Dining Room Lake Croft Inn

Accommodation for Automobile, Private Dinner and Supper Parties

A LARGE DUTCH ROOM OVERLOOKING
THE LAKE AND A VIEW OF THE PINES

Enclosed in a glass in stormy weather, with a seating capacity of 300
has been added

28 Miles From Boston

Telephone 8200-3

This Inn has been entirely rebuilt, with every thought for the comfort of its guests. The beauties and comforts are too numerous to describe—one must see for oneself. Adequately lighted and heated.

Week end accommodations may be had at Lake-Croft Inn, and parties desiring such during the driving season will do well to give reasonable notice of such intentions. The Hotel telephone is 8200-M, Hamilton. A supply of gasoline is kept constantly on hand for those who require such.

CHICKEN, LOBSTER AND STEAK DINNERS

Large Open Air Dance Hall Directly Over the Lake. Orchestra

SUNTAUG LAKE INN

Lynnfield, Mass.



OPEN THE YEAR ROUND

C. A. EAGLESTON CO.

Telephones, Lynn 8490 and 8494

H. M. MEEK PUB. CO.

DISTRIBUTORS and PRINTERS of

SERVICE



THE HOME OF SERVICE

Are you in need of

- ¶ The Services of a Stenographer?
- ¶ Lists of Names or of Firms in Any City, Town, County or State?
- ¶ Invoices, Statements, Clerical Work of Any Kind?
- ¶ Extra Assistance at Your Busy Season?
- ¶ Some one to Handle Addressing and Mailing of Your Catalogues or Lists?

If so we are prepared to furnish such SERVICE promptly, accurately at moderate prices.

12 WASHINGTON SQ. (west)

SALEM, MASS.

Telephone 650

The A. L. SMITH IRON WORKS

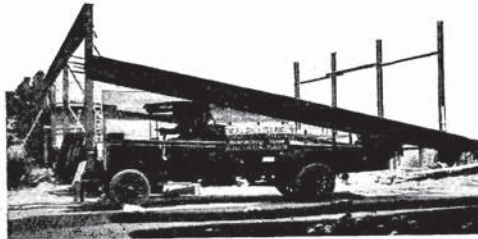


OFFICE & WORKS

217-233 Everett Ave., near Carter St.

PHONE CHELSEA 1205

CHELSEA, MASS.



Beams, Channels, Angles, Columns, Girders, Trusses, Industrial
Tracks, Fire Escapes, Stairs, Ornamental Iron Work, Hangers,
Anchors, Bolts, Coal-Hole Covers, Chimney Clean-out Doors.

REINFORCING RODS

AUTO TRUCK DELIVERY

Cedar Acres Gladioli

"THE ORCHID OF THE GARDEN"



Bulbs that bloom !

Gladioli have been developed and improved until now they are without exception the most useful and beautiful flower in the garden. The richness of coloring, diversity of shadings and profusion of bloom have been secured without sacrificing the sturdiness of the plant.

Write for Information

Let me help you to raise better Gladioli than any you have ever seen.

For years I have devoted all my time and thought to improving the Gladiolus and raising better bulbs. It is both my business and my pleasure. I will gladly answer any questions in regard to the "Orchid of the Garden," its culture, the best varieties, etc. There will be no charge.

Send for beautiful illustrated booklet describing many varieties and giving the real truth about each.

Reached by trolley from Beverly

B. HAMMOND TRACY

CEDAR ACRES

BOX A

WENHAM, MASS.

W. IRVING LEE

HERBERT P. OSBORN

LEE & OSBORN

SUCCESSORS TO W. S. LEE EST.

ELECTRICAL CONTRACTORS



SUPPLIES-CONSTRUCTION-REPAIRS

NO JOB
TOO LARGENONE
TOO SMALL**201 WASHINGTON STREET****Near Depot****SALEM, MASS.**

Telephone, Salem 762



1843

1917

The Mutual Life Insurance Company OF NEW YORK

In Massachusetts alone has paid in matured endow-
ments and death claims - - \$16,532,926.83
And in addition thereto has paid its living policy holders
large sums in dividends, surrender values, etc.



J. EDWARD HAMMOND
DISTRICT MANAGER

Office 252 Essex Street, Room 8

Telephone 1172-W

Residence 162 1-2 North St.

Telephone Connection



WILLIAM E. GALLAHER

ALBERT L. WHITE

Gallaher & White

SLATE ROOFING

Also Tin and Copper

SHEET METAL WORK

COPPER AND GALVANIZED IRON GUTTERS AND
CONDUCTORS, CORNICES, FINIALS AND SKYLIGHTS

Jobbing of all kinds
Promptly attended to.

Estimates furnished and work in the surrounding places solicited

Office and Works
5 Vale Street, Salem, Mass.

Telephone 2367-W

Residence, 5 VALE STREET

William S. McIntire
Pres. & Treas.

Peter F. Leonard
Secretary

Salem Iron Foundry

INCORPORATED

MANUFACTURERS OF

LIGHT and HEAVY
MACHINERY CASTINGS

CLOVER and ROSE STREETS
SALEM, MASSACHUSETTS

Telephone 1716-M

F. C. SARGENT



CONTRACTING
MASON
JOBGING

Brick, Stone and Drain
Laying, Concrete and
Granolithic Work a Spe-
cialty.

Plastering and White-
washing.

JOBGING PROMPTLY ATTENDED TO

Special Attention Given to the Building of

PLAIN AND FANCY FIREPLACES

OFFICE

19 Crombie Street, Salem, Mass.

TELEPHONE



Naumkeag Directory

FOR

SALEM

Beverly, Danvers, Marblehead

Peabody

CONTAINING AN

ALPHABETICAL LIST OF THE INHABITANTS AND BUSINESS FIRMS OF THE DISTRICT, STREET OR HOUSEHOLDERS' DIRECTORIES AND OTHER MISCELLANEOUS MATTER FOR EACH TOWN



Number 25

1917



Compiled and Published by

The Henry M. Meek Publishing Co.

12 Washington Square, Salem, Mass.

Price - - \$5.00

Copyright 1917 by Alice R. Meek

Table of Contents

Salem	Page	Salem	Page
Abbreviations	66	Street and Householders' Directory	85
Advertisements (general)	2-1611	Teachers	490
Advertisers in Boston, etc	47	Temperance Societies	512
Advertisers, Index to	41	United States Board of Examining Surgeons for Pensions	495
Almshouse	492	Villages, Hills, etc.	155
Assessors	488	Ward Boundaries	522
Board of Health	492	Water Department	492
Buildings, Halls, etc.	154	Wharves	155
Business Directory	47-1473		
Buyers' Guide	47-1473	Beverly	
Calender	65	Abbreviations	66
Cemeteries	155	Advertisements	1611
Census of 1915	929	Banks	920
Churches	493	Buildings, Halls, etc.	714
City Government	487	Business Directory	1473
City Officers	487	Cemeteries	714
Clubs	482	Churches	918
Commissioners of Trust Funds	492	City Government and Officers	914
Constables	489	Fire Alarm	915
Copyright Law	525	Fire Department	915
Courts	514	Inhabitants, Names of	731
Custom House	512	Police Department	915
Essex Institute	495	Post Offices	925
Essex County Officers	494	Railroad Stations	714
Fire Alarm	520	School Department	916
Fire Department	489	Societies, Institutions, etc.	919
Fire Limits	522	Street and Householders' Directory	673
Governor's Vote	518	Ward Lines	927
Hackney Carriage Regulations	524	Wharves	714
Holidays	521		
Home for Aged Men	495	Danvers	
Home for Aged Women	495	Abbreviations	66
Inhabitants, Names of	173	Advertisements	1627
Institutions	495	Banks	1109
Labor Organizations	485	Buildings, Halls, etc.	1003
Libraries	1610	Business Directory	1473
License Commissioners	492	Cemeteries	1004
License Question, Vote on	520	Churches	1108
Mails (arrival and departure)	513	Danvers State Hospital	1110
Masonic Societies	487	Fire Alarm	1107
Mayor, Vote for	515	Fire Department	1106
Military	509	Inhabitants, Names of	1023
Nicknames in Salem	156	Peabody Institute	1112
Odd Fellows	488	Post Offices	1113
Park Commissioners	492	Railroad Stations	1004
Peabody Academy of Science	496	School Department	1107
Plummer Farm School	497	Societies, Institutions, etc.	1109
Police Department	488	Street and Householders' Directory	985
Poor Department	491	Town Officers	1106
Post Office	512	Wharves	155
Precinct Boundaries	522		
Precinct Officers	469	Marblehead	
Probate and Insolvency	494	Abbreviations	66
Railroad Stations	155	Abbott Hall	1247
Registrars of Voters	492	Advertisements	1639
Registry of Deeds	515	Banks	1247
Salem Athanaeum	498	Beaches	1162
Salem Hospital	500	Buildings, Halls, etc.	1161
Salem Public Library	500		
School Committee	490		
Schools	490		
Sheriffs and Deputies	515		
Societies	480		
State Normal School	522		

TABLE OF CONTENTS

39

Marblehead	Page	Peabody	Page
Business Directory	1473	Banks	1436
Cemeteries	1162	Buildings, Halls, etc.	1298
Churches	1246	Business Directory	1473
Custom House	1250	Cemeteries	1298
Fire Alarm	1245	Churches	1434
Fire Department	1244	City Government & Officers	1431
Inhabitants, Names of	1173	Fire Alarm	1432
Post Offices	1250	Fire Department	1433
Railroad Stations	1162	Inhabitants, Names of	1307
School Department	1245	Peabody Institute	1438
Societies, Institutions, etc.	1246	Police Department	1431
Street and Household- ers' Directory	1141	Post Office	1439
Town Officers	1244	Railroad Stations	1298
Wharves	1162	School Department	1433
Peabody		Societies, Institutions, etc.	1435
Abbreviations	66	Street and Household- ers' Directory	1269
Advertisements	1647		

Index to Advertisers

Adams Academy of Dancing 145 Essex - - - - -	1697	Blood J B Co Lynn - - - - -	head lines Mhd and foot lines Pea names
Aiken Chas F (est) Dan - - -	1634	Bodwell Oscar R Dan - - - -	1735
Allard Almon 47 School - - -	1605	Boston Coffee House 271 Essex - - - - -	1736
Almy Bigelow & Washburn Inc 184-196 Essex and Beverly - - - - -	backbone and 8	Boston Economy Lamp Div Dan - - - - -	head lines Dan
Amer Degreasing Co Pea head lines Pea house guide		Boston Safe Deposit & Trust Co Boston - - - - -	front cover
Amer Law & Collection Agency 101 Wash head lines Sal names		Boucher Ovide A 231 Derby	1739
Ames A P & Co Pea - - - - -		Bowden T J & Son Mhd - - -	1642
head lines Pea names		Boyle John Co Pea - - - - -	1711
Ames G F & Co Lynn - - -	12	Bradstreet A J Dan head lines Dan	
Anderson & Co 289 Essex - - -	1664	Bradstreet H P Pea - - - - -	1648
Appleton T A 237 Essex and Beverly - - - - -	1615	Bragdon Clifford E Dan - - - -	foot lines Dan names
Appleton & Norton 252 Essex - - - - -	back cover	Brennan & Palmer 125 Wash	
Aranson M & Son 6 Mill - - -	1733	Bridge St Greenhouses 50	
Atlantic Garage Mhd - - - -		Bridge - - - - -	1669
head lines Mhd names		Brisbois Emile J 221 Essex - -	1708
Atlantic House Juniper Point foot lines Sal house guide		Brockway-Smith Corp The Boston and Lynn - - - - -	back cover
Atwood & McManus Box Co Chelsea - - - - -	foot lines bus dir'y	Brooks C H, Mrs Pea - - - - -	1685
Babcock C R Miss 264½ Essex	1661	Bruhm R C Bev - - - - -	1623
Bagley P B & G Peabody - - -	1654	Buck W N & Co 267 Essex	1720
Bailey E M 12 Wash sq (west) - - - - -	1706	Burnes Percy L Dan - - - - -	1635
Baldwin Edward S 289 Derby front cover		Burns' Detective Bureau Boston - - - - -	map
Balentine Linwood P 67 North - - - - -	1729	Bushby & Co Pea - - - - -	head lines Pea
Ballard W W Inc 179 Essex	1726	Butler Ferdinand A Dan - - -	foot lines Dan
Ballentine John O Pea - - -	1695	Bve Herbert Bev - - - - -	1622
Banks & Bradstreet Pea - - -	1678	Cabeen John F 295 Essex and Bev - - - - -	foot lines Sal names and 1728
Barrett Co Boston - - - - -	back cover	Cahill Katherine A 264 Essex	1719
Barry D A Pea - - - - -	1735	Cahill P M Pea - - - - -	1651
Barry Francis J 284 Wash - - -	1729	Cann George L Bev foot lines Bev names	
Bay State Creamery Co So Mason - - - - -	head lines Salem house guide	Capitol Oil Co 130 Canal - - -	1722
Beckett C L Co The Pea - - -	1655	Carney Wm J & Son Dan - - -	1636
Belleau Elzear & Son 125 Canal - - - - -	1738	Caron Bros 8 Charter - - - - -	1689
Bellefontaine A A Co 11 Front	1702	Carr W F 5½ Hardy - - - - -	1724
Berry William A Dan - - - -	1693	Carroll John T Dan - - - - -	1628
Berube Alfred 6 Ward - - - -	1663	Cassidy Chas V Pea - - - - -	1651
Beverly Board of Trade Bev - -	1619	Cedar Acres Gladiolus Farm Wen - - - - -	31
Beverly Evening Times Bev - -	1624	Central House Pea - - - - -	1648
Beverly Gas & Electric Co Bev - - - - -	1612	Central Paper Co 102 Jackson - - - - -	1725
Beverly Morning Citizen Bev	1625	Chamberlain Wm H Marble- head - - - - -	20
Beverly Nat'l Bank Bev - - -	1611	Chaput Paul N 209a Wash - -	head lines Sal names
Beverly Savings Bank Bev - - -	1613	Choate A K Bev - - - - -	1623
Beverly Storage Warehouse Beverly - - - - -	1613	Citizen Printing Co Bev - - - -	1625
Bixby H M Co 242 Essex bottom edge		City Fish Market 25 Front - - -	1700
Blackburn Joseph J Pea - - -	1655	Clapp William C 51 Wash - - -	1713
		Clapp & Tapley Co Dan - - - -	1714
		Coffin Horace E 150 Essex - - -	1661

ANCHOR POST IRON WORKS

W. F. CROWLEY, Manager

**GATES
and
RAILINGS**



**WIRE
and
IRON
FENCES**

SEND FOR CATALOG

79 Milk Street, Tel. Fort Hill 2359 Boston

INDEX TO CONTENTS

	Page	Salem	Page
Abbreviations	74	Fire Department	466
Academy Hall, Plan of seats	1703	Fire Limits	502
Advertisements (Automobile)	669	Governor Vote	498
Advertisements (general)	1743	Hack Fares	505
Advertisements (leather)	681	Holidays	502
Advertisers in Boston, etc ..	49	Home for Aged Men	473
Advertisers, Index to	41	Home for Aged Women	473
Amphitheatre	468	Hotels	1598
Arms Memorial Hall plan ..	1707	Inhabitants, Names of	171
Assessors	464	Institutions	473
Auctioneers	1559	Insurance Companies	1600
Bands	1562	Justices of the Peace	1604
Banks	1562	Labor Organizations	485
Board of Health	469	Lawyers	1608
Boarding Houses	1563	Libraries	1608
Boston Theatre Plans	1707	Life Insurance Companies	1608
Buildings, Hall, etc.	1707		
City Directory	1707		
.....			
.....			
.....			

Salem	Page	Danvers	Page
Precinct Officers	469	Justices of the Peace	1604
Probate and Insolvency	494	Lawyers	1606
Railroad Stations	149	Notaries Public	1619
Registrars of Voters	469	Peabody Institute	1141-1737
Registry of Deeds	494	Physicians	1627
Salem Athanaeum	476	Post Offices	1142
Salem Hospital	478	Railroad Stations	1052
Salem Public Library	478	School Department	1136
Salem Theatre	1699-1701	Societies, Institutions, etc. .	1138
School Committee	466	Street and Household-ers' Di- rectory	1035
Schools	466	Town Officers	1135
Sheriffs and Deputies	494	Wharves	1052
Societies	480	Marblehead	
State Normal School	502	Abbreviations	74
Street and Household-ers' Di- rectory	83	Abbott Hall	1272-1736
Teachers	467	Advertisements	131
Temperance Societies	490	Banks	127
Theatres and Hall Plans ..	1695	Beaches	1206
United States Board of Ex- amining Surgeons for Pen- sions	495	Buildings, Halls, etc.	1206
Villages, Hills, etc.	150	Business Directory	156
Ward Boundaries	502	Cemeteries	1206
Water Department	468	Churches	1
Wharves	150	Clergymen	
Beverly		Custom House	
Abbreviations	74	Fire Alarm	
Advertisements	1003	Fire Department	
Banks	932	Inhabitants, Names of	
Buildings, Halls, etc.	731	Justices of the Peace	
Business Directory	1557	Lawyers	
Cemeteries	731	Notaries Public	
Churches	929	Physicians	
City Government and Officers	925	Post Offices	
Clergymen	1572	Railroad Stations	1
Fire Alarms	926	School Department	
Fire Department	926	Societies, Institutions, etc. .	
Governor, Vote for	941	Street and Household-ers' Di- rectory	1
Inhabitants, Names of	749	Town Officers	12
Justices of the Peace	1604	Wharves	126
Lawyers	1608	Peabody	
License Question, Vote on ..	942	Abbreviations	7
Mayor, Vote for	940	Advertisements	15
Notaries Public	1619	Banks	14
Physicians	1627	Buildings, Halls, etc.	11
Post Office Department	926	Business Directory	17
		Cemeteries	11
		Churches	1
		Clergymen	
		Custom House	
		Fire Alarm	
		Fire Department	
		Inhabitants, Names of	
		Justices of the Peace	
		Lawyers	
		Notaries Public	
		Physicians	
		Post Offices	
		Railroad Stations	1
		School Department	
		Societies, Institutions, etc. .	
		Street and Household-ers' Di- rectory	1
		Town Officers	12
		Wharves	126

Colbert Bros 51 Derby - - -	1657	Dupre & St Pierre 35 Cen-	
Conley & McElroy Mach &		tral - - - - -	1690
Eng Co 97 Rantoul - - -		Durgin Mabel P Masonic Tem-	
head lines Bev names		ple - - - - -	1743
Conant Harry A 39 Church -	1687	Eagle Iron Foundry 17 Canal	5
Conant the Florist 129 Essex -	1701	Edwards Stephen A D Bev - -	1620
Consolidated Elect Lamp Co		Eldridge H A & Co Bev - - -	1622
Dan - - - - - head lines Dan		Eldridge Wm W Dan - - - -	1633
Cook Henry 67 North - - -	1684	Elliott Chas L jr Dan - - -	1635
Cook R M Mhd - - head lines Mhd		Emerson's Specialty Shop Bev	
Cotter Bros 25 Aborn foot lines Sal		front cover	
Crediford McLarren Bev -	1619	Essex House Stables r 11	
Creese & Cook Co Dan - - -	1714	Church - - - - -	1738
Cressy & Splaine Bev - - - -		Essex Metal & Refining Co	1730
foot lines Bev house guide		Essex Trap Rock & Construc-	
Cronan Thomas F 5 Web-		tion Co Pea - - - - -	1694
ster - - - - -	1668	Fairfield Charlotte 79a Wash	
Crosby Frank H Bev - - - -	1622	and 35-39 Derby - - - -	1688
Crosby William H Dan - - - -	1740	Fallon Machine Co 19 Oak-	
Crosby & Cann Bev - - - -		land - - - - -	1715
foot lines Bev names		Fanning George H 221 Essex	1671
Cross Press The Pea - - - -	1732	Farley J A Co 34 Front - - -	1733
Croughwell E A Pea - - - -	1653	Farrington George C Pea and	
Crowe John N 11 Woodside -	1691	Dan - - - head lines bus dir'y	
Crowell Charles M Lynn and		Federal Theatre Federal c	
Mhd - - - - -	1644	Wash - - - - -	1739
Curtis Charles E & Son 132		Felton Wm S & Co 261 Essex	1706
Canal - - - - -	1720	Fennessey Richard T Dan - -	1708
Daland Co Inc 215 Essex - -	1705	Ferguson Arthur T 74 North	1677
Dalton J Frank 218 Essex - -	1708	Field & Kennedy Bev - - - -	1618
Danvers Bleachery and Dye		Fisk Fred A 52 Webb and 21	
Works Pea - - - - -	1647	Essex - - - - -	1736
Danvers Board of Trade Dan	1680	Fleming Charles H 252 Essex	1707
Danvers Coal Co Dan - - - -		Flynn Coal Co 49 Bridge - -	1688
foot lines Dan		Flynn Thomas P Dan foot lines Dan	
Danvers Hardware Co Dan -	1629	Foote M A S 297 Bridge - - -	1668
Danvers Lamp Co Dan head lines Dan		Ford A S & Co 221 Essex - -	1659
Danvers Mirror Dan - - - -	1631	Foss E G Dan - - - - -	1636
Danvers National Bank Dan -	1627	Foss Simeon H 5 Oak - - - -	1704
Danvers Savings Bank Dan -	1629	Foster Sumner Dan - - - -	1634
Dawe William B 70 Wash		Fowler John C Bev - - - -	1621
head lines Sal names		Frye David 126 Wash	
Dawson Charles A 64 North -	1667	head lines Salem names	
Dawson M J Mrs Dan - - - -	1636	Fuller & Hutchinson 73 1/2	
Day Jay E & Co Dan - - - -	1693	North - - - - -	1666
Day Ralph A Co 245 Essex - -	1709	Gallaher & White 5 Vale - -	34
Delaney Thomas F Bev - - -	1616	Gates George W Dan - - - -	1653
Dennis John F 1 Oak - - - -	27	Gilbert & Cole Co Mhd - - -	foot
Dionne Joseph 12 Palmer - -	1668	lines Mhd	
Doane Ernest S Mhd - - - foot lines		Gilman H S 43 Front - - - -	1737
Mhd names		Girdler John Bev - - - - -	
Doane Howard A & Co Bev	1620	head lines Bev names	
Dobinson W J Engraving Co		Godsland George J 7 Franklin	
Boston - - - - -	1659	foot lines Sal names	
Dodge A & Son Corp Bev - - -	1619	Goodwin Benj F & Son Mhd	
Dodge C Furniture Co Man -	1703	foot lines bus dir'y	
Dodge William J Pea - - - -	1711	Goodwin D J Bev - - - -	
Dooling & Coffey 200 1/2 Essex -	1731	head lines Bev names	
Douglas M E Mhd - - - - -	1645	Gould J N 1 North - - - -	1729
Douglas & Hayes 287 Bridge	2	Gove Lumber Co Bev - - - -	1616
Doyle's Garage 39 Bridge - -	1676	Grady James L Bev - - - -	1623
Draper Richard B Pea		Grady Michael Bev - - - -	1626
foot lines Pea house guide		Graves James E Mhd - - - -	1644
Driscoll & Co Inc 13 Dodge -	1745	Greene & Hayes Pea - - - -	1712
Dube Joseph E 85 Leavitt - -	16	Gregory J J H & Son Mhd - -	
Dullea's Express Pea - - - -	1648	foot lines Bev	
Dunbar & Fessenden 208		Gregory & Brown Co Boston -	15
Bridge - - - - -	1691	Gulf Refining Co Bev - - - -	1722
Dunnels Lorenzo Dan - - - -	head	Hallowell M Pea - - - - -	1654
lines Dan names		Hamblet Hardware Co Pea -	
		foot lines Pea	

Hammond Frank W & C Bev	1692	Knowlton's Garage Bev	1624
Hampden Creamery Co Ever-		Koen Bros Inc Federal c	
ett	11	Wash	1739
Harmony Grove Greenhouses		Lafayette West Wash Laundry	
30 Grove	1742	Porter	1710
Harper Garage Co Bev and 76		Lake Croft Inn Hamilton	26
Laf Sal		Lakeside Farm Mid	1638
head lines Bev names and	1675	Lane Edward A Man	
Hathaway Gardner R Mhd	1642	head lines bus	dir'y
Hawkes A M Co 258 Wash	7	Lane Geo W & Son 187 Derby	1657
Hay Edward W 118 Wash and		Langmaid J P & Sons 311	18
12 Forrester	1707	Derby	18
Heffernan J E 66 Wash	1697	Lapointe Joseph 44 Ward	1658
Heller & Bixby 144-146 Essex	1709	Leal John Pea	1653
Hemeon J N Bev	1692	Leclerc Edmond 107 Leach	1602
Henderson R E & Co Bev		Le Courier De Salem 209	
foot lines Bev	names	Wash	1665
Hennessy J Edward 4 and 6		Lee Charles F & Co Bev	1614
Sewall	head lines Salem	Lee Edward C 40 North	1678
Henshaw John B 19 Foster	1719	Lee W S Co 241 Essex	
Henshaw Wallace L 29 Sy-		head lines bus	dir'y
monds	1719	Lee & Osborn 201 Wash	32
Herndon Bros Bev		Lefavour's Music Store 166-	
head lines Bev	names	168 Essex	front cover
Herrick F W 34 Norman	1664	Lemelin & Gagnon Jefferson	
Herrick Wm B Bev	1619	ave	1658
Highland Ave Garage 428 Es-		Leslie Wm J 7 Derby sq	1724
sex	1678	Levesque N 15 Harbor	1740
Hill B F 78 Wash	1705	Lewandos 72 Wash and Bos-	
Hines Charles J 16 Walter	1717	ton	back cover
Holyoke Insurance Partner-		Lewis' Cleaners & Dyers 54	
ship Agents 114 Wash	1707	Laf	head lines bus
Horgan M J & Son 24 Ab-		Lewis Samuel A jr 35 Laf	1667
bott	1664	Lindsey N B Co Inc Mhd	1646
Hudon Joseph F 209a Wash	1707	Lindsey's Bakery Mhd	1646
Hughes Garage Co 29 New		Litchman William T Mhd	1644
Derby	1674	Lloyd Andrew J Co 230 Essex	1723
Hughes & Kingston Trucking		Locke Milton P & Son 65	
Co 29 New Derby	22	North	65
Humphrey Coal Co Mhd	1646	Loring ave Conservatories 123	
Hunt W H & Son 197a Wash	1671	Loring ave	1701
Hurd Geo H Bev	1627	Lougree J L Co 275-281 Es-	
Hurd Laundry Co Bev	1618	sex	foot
Hurlburt Roy D 151 North	1664	lines misc dept and	1702
Hussey's Garage Bev	1618	Lovelace Bros Pea	1655
Hygrade Lamp Co Boston c		Lovett Charles W Lynn back	cover
Bridge	17	Low Daniel & Co Inc 231 Es-	
Ideal Baby Shoe Co Dan	1714	sex and 121 Wash	
Irving Box Co Inc 340 Bridge	1683	insert opp page 49	
Irving & Grant r 63 Flint	1677	Lowe Lawrence S Pea	1652
Jeffers John D Pea	1652	Ludham Charles Boston	1678B
Jodoin Joseph A r 272 Essex	1669	Lutes Carvel R Co Pea	1647
Johnson John A 10 Barton		Lyman Dupuis Shea Co 66 Laf	1728
sq	1683	Lynn Gas & Electric Co Mhd	
Johnson A B & Son Bev	1622	head lines Mhd	
Jones Fred S Bev	1621	Lyons W C Dan	1635
Jordan Fred H Pea	1653	McDonald Walter T 11 Wal-	
Joyce David r 26 Charter	1662	nut	1665
July J M Mrs 56 Bridge	1669	McKenney & Waterbury Bos-	
Kaplan Simon 36 Webb	1657	ton	1784
Karelitz Louis Pea	1650	Manning Arthur H Pea	1656
Kelley E G Pea	1651	Marblehead Messenger Mhd	1646
Kelley Mark E Co Pea		Marblehead Savings Bank	
head lines Pea	names	Mhd	1639
Kelsey Harlan P 209a Wash		Marblehead Transportation Co	
foot lines Sal	names	Marblehead	1640
Kerans Chas H Dan	1740	Marchand E & Son 4 Hathorne	
Ketchum C A & Co Inc 102		bdg and 73 Lawrence	1662
Jackson	1705	Marchand J Arthur 209a	
Kilham J F Bev	1721	Wash	1734
Kimball Bros 7-9 Dodge	1720	Marsh G E Co Lynn	
King Alex Mhd	1642	head lines Peabody house	guide

Marston-Sturtevant Co Bev -	1625	Odams Herbert 9 Bridge - - -	1715
Marston & Tapley Co Dan - -	1631	Odell Charles H & Co 70 Wash	1727
Marston's Express - - - - -	1631	Ohlman Marion V Pea - - - -	1704
Martin John S Co Inc Mhd -	1645	Oliver & Co 63 North - - - -	1727
Martin Joshua jr 15 Green - -	1669	O'Malley M D 266 Essex - - - -	1717
Maurais Charles F 3 Dodge st		Osborn Arthur G 34 Pea - - - -	1723
ct - - - - -	23	Osborne Calvin P Co Pea - - -	1711
Merchants National Bank		Ouellette Napoleon 1 Harbor	1658
253-257 Essex insert opp page	172	Page & Shaw Inc 254 Essex -	
Merrill A H Pea - - - - -	1647	head lines Salem names	
Merrill William G Dan - - - -	1634	Palmer's Clothing House 250	
Merritt Express Co 5 Norman		Essex - - foot lines Salem names	
front cover		Parmenter & Polsey Co Pea	
Michaud Alex 33 New Derby	1677	head lines Pea house guide	
Michaud M 37 Naumkeag - -	1663	Parsons A N Dan - - - - -	1632
Miller Wm 152 North - - - -	1704	Patten Paul B Co New Derby	
Miller's Music Parlor 145 Es-		c Dodge st ct - - - - -	1717
sex - - - - -	1726	Pauling E C 396 Essex - - - -	1726
Moody L B Co Inc 131 Wash	1739	Peabody Board of Trade - - - -	1682
Moore B N & Sons Co Inc Pea	1712	Peabody Check Printing Co	
Moore S M Est Dan - - - - -	1636	Pea - - - - -	1732
Morin Albert 278 Jefferson ave		Peabody Electric Light Plant	
foot lines Sal names		Pea - - - - -	1716
Morrison & Young 297 Bridge	21	Peabody Electric Shop Pea - -	1698
Morse C H Co 292 Essex - -	1724	Peabody Enterprise Pea - - - -	1648
Munroe & Arnold Merritt Ex-		Peabody Furniture Co Pea -	1703
press Co 5 Norman* - - front cover		Peabody Garage Pea - - - - -	
Murney John M Bev - - - - -	1614	foot lines Pea house guide	
Murphy James J 8½ Allen - -	1662	Peabody George M Dan - - - -	1633
Mut Benefit Life Ins Co 118		Peabody Press Co Pea - - - -	1648
Wash - - - - -	1707	Peabody Steam Laundry Pea -	1710
Mutual Life Ins Co of N Y		Peabody Tallow Co Pea - - - -	
252 Essex - - - - -	33	head lines Pea house guide	
National Grand Bank Mhd - -	1639	Peabody Woburn Machine Co	
Naumkeag Steam Cotton Co		Pea - - - - -	1713
Congress - insert opp page	672	Pendar S A 27 Derby sq - - - -	1691
Naumkeag Trust Co 217 Es-		Perkins Arthur S 11 13 and	
sex - - - - -	9	15 Sewall - - - - -	1738
Needle Kraft Bev - - - - -	1615	Perley Edward L 1 City Hall	
Nelson J S & Son 37 and 43		ave - - - - -	1678A
Bridge - - - - -	1660	Perron John 24 New Derby	1689
New Central Garage Pea - - -	1678	Peterson Vincent S 62 North	
New England Coal & Coke Co		and 237 Essex - - - - -	1690
Bev - - - - -	1621	Pettingell & Dwelly Dan - -	1638
New England Mut Life Ins Co		Philbrook J A Dan - - - - -	1634
70 Wash - - head lines Sal names		Philinte E A Bev - - - - -	
New Essex House 176 Essex		head lines Bev house guide	
foot lines Sal house guide		Pickering George W 124	
New York Life Insurance Co		Wash and Bev - - - - -	1688
252 Essex - - - - -	1707	Pitman Frank L Pea - - - - -	1682
Newcomb & Gauss 1 City Hall		Pitman J A & A M 49 School	1751
ave - - - - -	1731	Pitman & Brown Co 9 to 11	
Newell & Knowlton Inc Pea -	1715	Wash and 40 Bridge - - - -	
Newhall Milo A & Co 20-22		insert opp page	1473
Central - - - - -	1731	Polish Industrial Association	
Newhall Walter 221 Essex - -	1734	226 Derby - - - - -	1734
Newmark's Woman's Store		Poor O G Lumber Co Swamp	1717
163 Essex - - - - -	1709	Porter J F & Son Bev - - - - -	1617
Nichols Andrew Dan - - - - -	1628	Porter Bros Dan - - - - -	1703
Nichols M D Tool Co Bev - -		Porter Charles W Bev - - - -	1020
head lines Bev house guide		Porter E H Co Pea - - - - -	1696
North Salem West Wash		Porter J V Co Bev - - - - -	1623
Laundry 12 Nursery - - - -	1710	Power Dempsey Mode Co 140	
North Shore Creamery Co Bev		Wash - - - - -	1703
head lines Bev names		Preston Chas H Dan - - - - -	1629
North Shore Ferneries Co		Preston C A Bev - - - - -	1618
Bev - - - - -	1615	Putnam Bros Pea - - - - -	1655
North Street Greenhouses 90		Putnam Geo O Dan - - - - -	1637
North - - - - -	1701	Putnam & Ruxton Dan - - - -	1635
Northey Wm E 126 Wash - - -	1689	Raby Eustache r 23 Brown -	1685
Norton B K Co Pea - - - - -	1650	Radford W P & Co 159 Wash	1661
O Brion Russell & Co Boston -	14		

Ramsdell Arthur S Mhd - - -	1318	Saturday Evening Observer 1	
Ray & Murray Pea - - - - -	1440	City Hall ave - - - - -	1731
Reid Angus Pea - - - - -		Sawyer E C Bev - - - - -	1677
	insert opp page 1325	Shaughnessy John P 42 North	1729
Richardson Ernest S Dan - -	1630	Shea William A Pea - - - -	1687
Riley Drug Co 118 Essex - -	1697	Sheehan & Murphy 15 Bow	
Robb Malcolm E 221 Essex 1725		and Beverly head lines Bev	
Roberts Lillian E 244 Essex 1735		and Salem names	
Robertson Robert Co Bev - -		Shepard Arthur K 11 Andover	1685
	foot lines Bev names	Shortell M & Son Bev - - - -	1713
Roger Conant Co-operative		Sillars Addison P Pea - - - -	1650
Bank 125 Wash - - - - -	1678A	Simmons Wm H Pea - - - - -	1650
Rolfe J Frank 263a Essex - -	1727	Sinclair C E r 8 North - - -	1685
Roope & Polkins 73½ North -	1690	Slee Chas A Mhd - - - foot lines Mhd	
Ropes Brothers 49-55 Central		Smith A L Iron Works Chelsea	30
and Dan - - - insert opp page 985		Smith Everett C 37 Wash - -	
Roscoe & Steele Mhd - - - -	1642		foot lines Salem house guide
Russell & Jones 129½ Essex 1726		Smith Frank E 139 Essex - -	1741
Ryan Joseph G 70 Wash - - -	1734	Smith H E & Co Dan - - - - -	1628
Ryan Katherine A 264 Essex 1719		Smith Obed H Mhd - - - - -	1645
Salem Art Shop 293 Essex - -	1727	Smith William M Bev - - - -	1616
Salem Auto Supply Co 6 Wash		Snow Thomas D Mhd - - - - -	1641
sq (west) head lines Salem	names	Sophos Emmanuel J Pea - - -	1654
Salem Brass Foundry 7		Southard Fred E 13 Central	1716
Franklin foot lines Salem	names	Southwick L B Co The Pea - -	1712
Salem Chamber of Commerce		Southworth Bros 71 Webb	
126 Wash - - - - -	1686	and Bev - - - foot lines Bev names	
Salem Electric Lighting Co		Spaulding J E Pea - - - - -	foot
205 Wash - - - insert opp page 48			lines Pea
Salem Elevator Works Canal		Spaulding Willard Pea - - -	1652
c Broadway - - - - -	3	Star Laundry Bev - - - - -	1625
Salem Evening News 122		State St Garage Mhd foot lines Mhd	
Wash - - - - -	1666	Sterling Confectionery Co 209	
Salem Five Cents Savings		Wash - - - - -	1689
Bank 210 Essex - - - front cover		Stockwell H E Pea - - - - -	1741
Salem Gas Light Co 247-		Stockwell & Millett 14 Wash	
251 Essex - - - insert opp page 1472		sq (west) - - - - -	
Salem Granite Co 275 Bridge	1742		head lines Sal House guide
Salem Kindling Wood Co		Stone M Philip Pea - - - - -	1629
340-342 Bridge - - - - -	1683	Stone Samuel H & Co Inc Bev	1616
Salem Iron Foundry Inc Clover		Stuart R V & Co 200½ Essex	1782
and Ross - - - - -	35	Suntaug Lake Inn Lynnfield	28
Salem Laundry Co 51-55 Laf		Sutherland A D 202 Bridge -	1739
ayette - - - - -	1710	Sylvester Co (The) Dan - - -	1630
Salem Merchants' Assoc 209a		Tapley C R & Co Dan front cover	
Wash - - - - -	1718	Taylor George E 221 Essex -	1723
Salem Morris Plan Co 125		Temple Court 15 Lynde	
Wash - - - - -	6		foot lines Salem names
Salem Oil & Grease Co 60		Titus A C & Co Jefferson ave	1659
Grove - - - - -	1659	Tompkins C F Co 87 Wash Sal	
Salem Plumbing & Lighting		and Beverly - - - - -	1703
Co 44 Laf - - - - -	1698	Tracy B H Wen - - - - -	31
Salem Press Co 300 Essex - -	1732	Trask J W & Co Pea - - - - -	1654
Salem Regrinding Co 55 Wash	1716	Trask Roofing Co 206 and 208	
Salem Rubber Co 156 Essex 1736		Bridge - - - - -	1736
Salem Safe Deposit & Trust		Trow James H 4 St Peter - -	1728
Co 116 Wash - - - - -	10	United Shoe Machinery Co	
Salem Savings Bank 125 Wash		Bev and Boston - - - - -	730
back cover and 24		Verner B & Co Mhd - - - - -	1640
Salem Storage Warehouse Co		Wadleigh Co 81 North - - -	1737
295 Bridge - - - - -	19	Walk-Over Boot Shop 263 Es-	
Salem Window Shade and		sex - - - - -	1683
Screen Co 4½ Ward - - - -	1703	Walke Wm T 123 Loring ave	1701
Salem Window & House		Walker Lithograph & Pub-	
Cleaning Co r 201 Essex - -	1687	lishing Co Boston - - - - -	1699
Salkins & Laskey Mhd - - - -	1644	Walton Carrie E 2 River - -	1738
Sanderson Edward T 221 Es-		Ward J M & Co Pea - - - - -	1647
sex - - - - -	1671	Ward Ralph W Bev - - - - -	1701
Sands Ernest L 200 High-		Wards Insurance Agency 62	
land ave and Dan - - - - -	1719	Wash - - - - - top edge and	1706
Sargent Fred C 19 Crombie	36	Warren Five Cents Savings	
		Bank Pea - - - - -	1649

Warren Nat'l Bank Pea - - -	Wilson J Colby Bev - - - - -	1724
insert opp page 673	Wilson & Robinson 27 Derby	
Waterman J S & Sons Inc Bos-	sq - - - - - front edge and	1698
ton - - - - -	Winer's Specialty Shop Inc	
13	243 Essex - - - - -	1709
Waters & Brown 69 Wash	Witch City Auto Co 71 Laf	1673
front cover	Witch City Bottling Works	
Webb A N & Co 27 and 29 En-	Inc 4 and 6 Sewall	
dicott - - - - -	head lines Salem names	
1730	Witch City Forge 6½ Margin	1658
Webber Wm G Co Essex and	Witch City Vulcanizing Co	
Wash - - - - -	72 Laf and 2 New Derby	1672
4	Woelfel Embossing and Decor-	
Welch James J & Co 15 Front	ating Co Pea - - - - -	1711
and Beverly insert opp page 984	Wonson Carlton W Bev - - -	1614
Wendell Floyd B 17 Beacon -	Wood C H W Co Danvers -	1637
1663	Wood Robert I Bev - - - - -	
Wenham Lake Ice Corp 20	foot lines Bev names	
March - - - - -	Woodbury Albert K 50 Howard	1683
1661	Woodbury H P & Son Bev - -	
Whidden A H & Son Inc Pea-	head lines Bev names	
body - - - foot lines Pea	Wright Ernest Bev - - - - -	foot
names	lines Bev house guide	
Whipple G W & Co 290 Essex	Wright Fred M Lynn - -back	cover
1667	Wright F E Leather Co Pea -	1713
Whipple S & Son 179 Derby	Wright Harry G 70 Wash - -	1721
1657	Young Richard Co Pea - - -	1715
Whitcomb-Carter Co Bev - -	Zwicker Joshua N Dan - - -	1637
foot lines Salem and Bev		
names		
Whitten C E Lynn - - - - -		
1675		
Whittier Joseph M Dan - - -		
1632		
Whittier J Bev - - - - -		
1615		
Whittredge W C & Co Lynn		
foot lines bus dir'y		
1632		
Wilkins Alvin A Dan - - - -		
1638		
Wilkins Warren A Dan - - -		
1638		

BUYERS' GUIDE
OR
BUSINESS DIRECTORY
FOR
Advertisers in Boston, Lynn, Etc.

Animals		Bottle Box Mnfrs	
Ludlam Charles 69 Bromfield Boston - - - - -	1678B	Atwood & McManus Box Co off Everett ave Chelsea - - foot lines bus dir'y	
Antiseptics		Box Mnfrs	
Barrett Co The, 35 Wendell Boston - - - - -	back cover	Atwood & McManus Box Co off Everett ave Chelsea - - foot lines bus dir'y	
Asphalt Materials		Box Printers	
Barrett Co The, 35 Wendell Boston - - - - -	back cover	Atwood & McManus Box Co off Everett ave Chelsea - - foot lines bus dir'y	
Atlases		Box Shooks	
Walker Lithograph & Pub- lishing Co 400 Newbury Boston - - - - -	1699	Atwood & McManus Box Co off Everett ave Chelsea - - foot lines bus dir'y	
Automobile Insurance		Builders Iron Work	
OBrion Russell & Co 108 Wa- ter Boston - - - - -	14	Smith A L Iron Works 217- 233 Everett ave Chelsea - -	28
Automobile Painting		Building Materials	
Whitten Charles E 40 Central ave Lynn - - - - -	1675	Poor O G Lumber Co Elm pl Swampscott - - - - -	1717
Automobile Repairers and Supplies		Whittredge W C & Co 358 Broad Lynn - -	foot lines bus dir'y
Whitten Charles E 40 Central ave Lynn - - - - -	1675	Building Paper	
Automobiles		Barrett Co The, 35 Wendell Boston - - - - -	back cover
Whitten Charles E 40 Central ave Lynn - - - - -	1675	Butter, Cheese, Etc.	
Automobiles Rented		Blood J B Co 94-122 Summer and Silsbee Lynn - - - - -	head lines Mhd and foot lines Pea
Whitten Charles E 40 Central ave Lynn - - - - -	1675	Hampden Creamery Co Orient ave Everett - - - - -	11
Banks		Cabinet Makers	
Boston Safe Deposit and Trust Co 100 Franklin Boston - - front cover		Dodge C Furniture Co off North Manchester - - - - -	1703
Bird Stores		Canned Goods	
Ludlam Charles 69 Bromfield Boston - - - - -	1678B	Blood J B Co 94-122 Sum- mer and Silsbee Lynn - - - head lines Mhd and foot lines Pea	
Bird and Cage Supplies			
Ludlam Charles 59 Bromfield Boston - - - - -	1678B		

Salem Electric LIGHTING COMPANY Salem, Mass.

ORGANIZED 1880



General Offices

201 Devonshire St., Boston

President, ALBERT B. TENNEY

1st Vice-Pres. D. E. Manson

2nd Vice-Pres. H. T. SANDS

Local Office,

205 Washington St., Salem

Manager, S. FRED SMITH

Office Manager, GEORGE E. TEEL

Station,

25 Peabody St., Salem, Mass.

Auto Charging Station,

33 Peabody St., Salem, Mass.

ELECTRICITY For Lighting and Power ALSO FOR AUTOMOBILES

Schedule of rates covering different classes of Service may be obtained
upon request.

Special attention given to the charging of automobile batteries.

Electricity furnished for heating and cooking.



"Daniel Low's" Is More Than a Jewelry Store!

¶ It is a leather goods store, a stationery store, a china and cut glass store, a half a dozen gift shops — all in one. And more: It carries twice as much Jewelry and silverware as the ordinary jewelry store, not to mention scores of other things not found in any other store.

How many of the following are there that you "did not know Low's carried"?

- | | | |
|-------------------------|----------------------------------|---------------------------|
| Artificial Flowers | Initials | Percolators |
| Automobile Conveniences | —stamped and applied | Questions gladly answered |
| Birthday Gifts | Jardinieres | Rosaries |
| Bags (traveling) | Jewelry | Sewing Articles |
| Chafing Dishes | —Black Onyx | Silver |
| Class Pins | —Cameo | —Sterling |
| Clocks | —Diamond | —Plate |
| China | —Green Gold | —Sheffield |
| Colonial Articles | —Ivory | —Dutch Reproductions |
| Diamonds | —Japanese | —Polish |
| —set and remodeled | —Mother of Pearl | Stationery |
| Designs for | —Peacock | —Wedding |
| —Monograms | —Platinum | —Dies |
| —Jewelry | —Seed Pearl | —Calling Cards |
| —Tableware | —Vermicelli | —Birth Announcements |
| —Sampler Trays | —Wedgewood | —Christmas engraved |
| Door Plates | —Rare old Jewelry | Souvenirs of Salem |
| Emblems | —Rhinstone | Suit Cases and Fittings |
| Electric Lamps | Leather Goods | Toilet Articles |
| —Toasters | Medicine Cases | Tea Sets |
| Eyeglasses | Mirrors (Colonial reproductions) | —Special Sets to order |
| —fitted and repaired | Monograms | Thermos Bottles |
| Flower Bowls | Mahogany Colonial Articles | Travelers' Articles |
| Favors | Motor Restaurants | Umbrellas |
| Fans | Manicure Sets | Vases |
| Fountain Pens | Novelties | Watches |
| Frames (photo) | Old gold & silver bought | Witch Novelties |
| Glassware | Opera Glasses | Wedding Rings |
| Garden Baskets | Optical Goods | Work Baskets |
| Golf Novelties | Pottery | |
| Hand-made Silver | Pictures (Colonial) | |
| | Pearl Necklaces | |

¶ New things arrive almost daily. Make it a point to come in every so often to see them. You will find our salesforce courteous, attentive and helpful with suggestions whether your purchase involves little or much — or if you come in merely to look around.

DANIEL LOW & CO., SALEM, MASS.

Diamond Merchants—Jewelers—Silversmiths

1867—FOR 50 YEARS—1917

Chicken and Steak Dinners		Doors, Sash and Blinds	
Lake-Croft Inn Hamilton - -	26	The Brockway-Smith Corp 90- 98 Canal Boston and 57	
Suntaug Lake Inn Grove n		Munroe Lynn - - - - -	back cover
Suntaug Lake Lynnfield - -	28		
Chimney Tops and Fire Clay		Drain Pipe	
Whittredge W C & Co 358		Whittredge W C & Co 358	
Broad Lynn - - foot lines bus dir'y		Broad Lynn - - foot lines bus dir'y	
Cider Mnfrs		Dyers	
Lakeside Farm 19 Lake Mid- dleton - - - - -	1638	Lewandos 70 Market Lynn 72	
		Wash Salem 286 Boylston	
		Boston - - - - -	back cover
Cleansers		Electrotypers and Stereotypers	
Lewandos 70 Market Lynn 72		Dobinson W J Engraving Co	
Wash Salem 286 Boylston		275 Wash Boston - - - - -	1699
Boston - - - - -	back cover		
Coal Tar		Embalmers	
Barrett Co The, 35 Wendell		Waterman J S & Sons Inc	
Boston - - - - -	back cover	2326 Wash Boston - - - - -	13
Coal Tar Products		Engravers	
Barrett Co The, 35 Wendell		Dobinson W J Engraving Co	
Boston - - - - -	back cover	275 Wash Boston - - - - -	1699
		Walker Lithograph & Pub- lishing Co 400 Newbury	
		Boston - - - - -	1699
Collections		Express	
Lovett Charles W Security		Wright Fred M 103 Central	
Trust bldg Lynn and 84		Lynn - - - - -	back cover
Equitable bldg Boston	back cover		
Columns and Posts		Fertilizers	
The Brockway-Smith Corp 90- 98 Canal Boston and 57		Marsh George E Co 393 Chest- nut Lynn - - - - -	
Munroe Lynn - - - - -	back cover	head lines Pea house guide	
Corporation Law		Fire Escape Mnfrs	
Lovett Charles W Security		Smith A L Iron Works 217- 233 Everett ave Chelsea -	28
Trust bldg Lynn and 84			
Equitable bldg Boston	back cover		
Cream Dealers		Freight Claims	
Hampden Creamery Co Orient ave Everett - - - - -	11	Lovett Charles W Security	
		Trust bldg Lynn and 84	
		Equitable bldg Boston	back cover
Dairy Products		French Dyeing and Cleansing	
Hampden Creamery Co Orient ave Everett - - - - -	11	Lewandos 70 Market Lynn 72	
		Wash Salem 286 Boylston	
		Boston - - - - -	back cover
Decorators		Funeral Directors	
Lane Edward A 55 School		Waterman J S & Son Inc	
Manchester - head lines bus dir'y		2326 Wash Boston - - - - -	13
Detective Agencies		Furniture	
Burns Detective Bureau 1		Dodge C Furniture Co off	
Beacon Boston - - - - -	map	North Manchester - - - - -	1703
		Gregory & Brown Co 6 Ham- ilton pl Boston - - - - -	15
Dining Rooms		Furniture Repairing	
Lake Croft Inn Hamilton - -	26	Dodge C Furniture Co off	
Suntaug Lake Inn Grove n		North Manchester - - - - -	1703
Suntaug Lake Lynnfield - -	28		
Disinfectants			
Barrett Co The, 35 Wendell			
Boston - - - - -	back cover		

Furniture and Piano Mover
Wright Fred M 103 Central
ave Lynn - - - - - back cover

Garage

Whitten Charles E 40 Central
ave Lynn - - - - - 1675

Gas and Electric Fixtures

McKenny & Waterbury 181
Franklin Boston - - - - - 1784

Gold Fish and Aquariums

Ludlam Charles 69 Bromfield
Boston - - - - - 1678B

Granite Workers

Ames G F & Co 390-394
Broadway Lynn - - - - - 12

Gravel Roofing Materials

Barrett Co The, 35 Wendell
Boston - - - - - back cover

Hotels

Lake Croft Inn Hamilton - - 26
Suntaug Lake Inn Grove n
Suntaug Lake Lynnfield - - 28

House Finish

Poor O G Lumber Co Elm pl
Swampscott - - - - - 1717

Information

Burns Detective Bureau 1
Beacon Boston - - - - - map

Insurance and Real Estate

O'Brien Russell & Co 108
Water Boston - - - - - 14
Tapley C R & Co 87 Kilby
Boston - - - - - front cover

Interior Decorators

Gregory & Brown Co 6 Hamil-
ton pl Boston - - - - - 15

Investigations

Burns Detective Bureau 1
Beacon Boston - - - - - map

Iron Columns

Smith A L Iron Works 217-
233 Everett ave Chelsea - - 30

Iron Girders and Trusses

Smith A L Iron Works 217-
233 Everett ave Chelsea - - 30

Iron Stairs

Smith A L Iron Works 217-
233 Everett ave Chelsea - - 30

Iron Timber Hangers and Anchors

Smith A L Iron Works 217-
233 Everett ave Chelsea - 30

Justices of the Peace

Lovett Charles W Security
Trust bldg Lynn and 84
Equitable bldg Boston back cover
Tapley C Ralph 87 Kilby
Boston - - - - - front cover

Lamps (Electric and Gas Fixtures)

McKenny & Waterbury 181
Franklin Boston - - - - - 1784

Launderers

Lewandos 70 Market Lynn #2
Wash Salem 286 Boylston
Boston - - - - - back cover

Lawyers (Patent)

Lovett Charles W Security
Trust bldg Lynn and 84
Equitable bldg Boston back cover

Life Insurance

O'Brien Russell & Co 108
Water Boston - - - - - 14

Lighting Fixtures (Electric and Gas Lamps)

McKenny & Waterbury 181
Franklin Boston - - - - - 1784

Lime, Cement and Sand

Whittredge W C & Co 358
Broad Lynn foot lines bus dir'y

Lithographers

Walker Lithograph & Pub-
lishing Co 400 Newbury
Boston - - - - - 1699

Lock Corner Boxes

Atwood & McManus Box Co
off Everett ave Chelsea - -
foot lines bus dir'y

Lost and Found

Burns Detective Bureau 1
Beacon Boston - - - - - map

Lumber Dealers

Poor O G Lumber Co Elm
pl Swampscott - - - - - 1717

Machinery Mnfrs

United Shoe Machinery Co
205 Lincoln Boston - - - - - 730

Mantels and Medicine Cabinets

The Brockway-Smith Corp 90-
93 Canal Boston and 57
Munroe Lynn - - - - - back cover

Map Publishers		Paper Hangings	
Walker Lithograph & Publishing Co 400 Newbury Boston - - - - -	1699	Gregory & Brown Co 6 Hamilton pl Boston - - - - -	15
Marble and Granite Works		Patent Copyright and Trade Mark Law	
Ames G F & Co 390-394 Broadway Lynn - - - - -	12	Lovett Charles W Security Trust bldg Lynn and 84 Equitable bldg Boston back cover	
Masons' Supplies		Patent Solicitors and Experts	
Whittredge W C & Co 358 Broad Lynn - foot lines bus dir'y		Lovett Charles W Security Trust bldg Lynn and 84 Equitable bldg Boston back cover	
Mausoleums		Paving Materials	
Ames G F & Co 390-394 Broadway Lynn - - - - -	12	Barrett Co The, 35 Wendell Boston - - - - -	back cover
Missing Friends Located		Piano and Furniture Mover	
Burns Detective Bureau 1 Beacon Boston - - - - -	map	Wright Fred M 103 Central ave Lynn - - - - -	back cover
Monumental Works		Planing, Sawing Furniture	
Ames G F & Co 390-394 Broadway Lynn - - - - -	12	Dodge C Furniture Co off North Manchester - - - - -	1703
Mortgages and Real Estate		Plate Glass Insurance	
Tapley C R & Co 87 Kilby Boston - - - - -	front cover	O Brion Russell & Co 108 Water Boston - - - - -	14
Mouldings and Turned Work		Printers	
The Brockway-Smith Corp 90-98 Canal Boston and 57 Munroe Lynn - - - - -	back cover	Walker Lithograph & Publishing Co 400 Newbury Boston - - - - -	1699
Notary Public		Printers (wood)	
Lovett Charles W Security Trust bldg Lynn - - - - -	back cover	Atwood & McManus Box Co off Everett ave Chelsea - - - - -	foot lines bus dir'y
Ornamental Iron		Private Detectives	
Smith A L Iron Works 217-233 Everett ave Chelsea - - - - -	30	Burns Detective Bureau 1 Beacon Boston - - - - -	map
Packing Box Shooks		Provisions	
Atwood & McManus Box Co off Everett ave Chelsea - - - - -	foot lines bus dir'y	Blood J B Co 94-122 Summer and Silsbee Lynn - - - - -	head lines Mhd and foot lines Pea
Packing Boxes		Publishers	
Atwood & McManus Box Co off Everett ave Chelsea - - - - -	foot lines bus dir'y	Walker Lithograph & Publishing Co 400 Newbury Boston - - - - -	1699
Painter		Real Estate	
Lane Edward A 55 School Manchester - - - - -	head lines bus dir'y	Tapley C R & Co 87 Kilby Boston - - - - -	front cover
Paints, Oils and Glass		Road Maps	
Lane Edward A 55 School Manchester - - - - -	head lines bus dir'y	Walker Lithograph & Publishing Co 400 Newbury Boston - - - - -	1699
Paper Hanger		Road Preservatives	
Lane Edward A 55 School Manchester head lines bus dir'y		Barrett Co The, 35 Wendell Boston - - - - -	back cover

Roofing Materials		Undertakers	
Barrett Co The 35 Wendell Boston - - - - -	back cover	Waterman J S & Sons Inc 2326 Washington Boston -	13
Secret Service Agents		Upholsterers	
Burns Detective Bureau 1 Beacon Boston - - - - -	map	Dodge C Furniture Co off North Manchester - - - -	1703
Shingle Stain		Gregory & Brown Co 6 Ham- ilton pl Boston - - - - -	15
Barrett Co The 35 Wendell Boston - - - - -	back cover	Wall Papers	
Slate and Slate Cement		Gregory & Brown Co 6 Ham- ilton pl Boston - - - - -	15
Barrett Co The, 35 Wendell Boston - - - - -	back cover	Water Proof Materials	
Soap Manufacturers		Barrett Co The, 35 Wendell Boston - - - - -	back cover
Marsh George E Co 393 Chest- nut Lynn hd lines Pea house	guide	Wood Preservatives	
Solicitors of Patents		Barrett Co The, 35 Wendell Boston - - - - -	back cover
Lovett Charles W Security Trust bldg Lynn and 84 Equitable bldg Boston - - -	back cover	Wood Printers	
Structural Iron & Steel		Atwood & McManus Box Co off Everett ave Chelsea - -	foot lines bus dir'y
Smith A L Iron Works 217- 233 Everett ave Chelsea	30	Wood Workers	
Teas, Coffees and Snices		Dodge C Furniture Co off North Manchester - - - -	1703
Blood J B Co 94-122 Sum- mer and Silsbee Lynn - -	head lines Mhd and foot lines Pea	Wooden Boxes	
Trust Companies		Atwood & McManus Box Co off Everett ave Chelsea - -	foot lines bus dir'y
Boston Safe Deposit and Trust Co 100 Franklin Boston - -	front cover		

