





# POLK'S SALEM

(Essex County)

(MASSACHUSETTS)

## CITY DIRECTORY

(for the Year beginning Dec. 1, 1933)

Vol. **1933-34** XXXV.

Including

### PEABODY, DANVERS and MARBLEHEAD

Containing an Alphabetical Directory of Business Concerns and  
Private Citizens, a Street and Avenue Guide and Directory  
of Householders, and Much Information of a  
Miscellaneous Character; also a

### BUYERS' GUIDE

and a Complete

### Classified Business Directory

FOR DETAILED CONTENTS SEE GENERAL INDEX

PRICE



\$15.00

### R. L. POLK & CO. of New England Publishers

6 New Derby St.  
Salem, Mass.  
Tel. 2152

354-360 Fourth Ave.,  
New York, N. Y.  
Tel. Caledonia 5-8500

DIRECTORY LIBRARY FOR FREE USE OF PUBLIC AT  
SALEM CHAMBER OF COMMERCE

Member Association of North American Directory Publishers

Copyright, 1934, by R. L. Polk & Co. of New England

Section 28, Copyright Law  
In Force July 7, 1909

That any person who wilfully and for profit shall infringe any copyright secured by this act, or who shall knowingly or wilfully aid or abet such infringement, shall be deemed guilty of a misdemeanor, and upon conviction thereof shall be punished by imprisonment for not exceeding one year, or by a fine of not less than one hundred dollars nor more than one thousand dollars, or both, in the discretion of the court.



PUBLISHERS' NOTE

The information in this Directory is gathered by an actual canvass and is compiled in a way to insure maximum accuracy.

The publishers cannot and do not guarantee the correctness of all information furnished them nor the complete absence of errors and omissions, hence no responsibility for same can be or is assumed.

The publishers earnestly request the bringing to their attention of any inaccuracy so that it may be corrected in the next edition of the directory.

R. L. POLK & CO., of New England, Publishers.

# GENERAL INDEX

---

	Salem	Peabody	Danvers	Marblehead
Abbreviations .....	52	—	—	—
Alphabetical List of Names.....	53	545	771	903
Apartment Buildings .....	1040	1040	1040	1040
Buildings—Office and Public.....	1051	1051	1052	1052
Business Directory .....	1039	1039	1039	1039
Buyers' Guide .....	21	21	21	21
Cemeteries .....	1053	1053	1053	1053
Chamber of Commerce.....	Y	—	—	—
Churches .....	1054	1054	1055	1055
City Government .....	14	541	—	—
Classified Business Directory.....	1039	1039	1039	1039
Clergymen .....	1055	1056	1056	1056
Clubs .....	1057	1058	1058	1058
Convents .....	1063	1063	—	—
County Officers .....	17	541	767	899
Courts .....	18	543	—	901
Fire Department .....	15	542	768	900
Fraternal Organizations .....	1115	1115	1116	1116
Halls .....	1078	1078	1078	1079
Homes .....	1080	1080	1080	1080
Hospitals .....	1080	1080	1080	1080
Index to Advertisers.....	8	—	—	—
Labor Organizations .....	1084	1084	—	—
Legal Blue Book..... opp.	1085	—	—	—
Libraries .....	1087	543	768	901
Mass. Commonwealth of .....	18	—	—	—
Parks .....	1101	1102	—	1102
Police Departments .....	16	543	768	901
Post Offices .....	18	543	768	901
Public Schools .....	1112	1112	1112	1112
Railroad Stations .....	18	543	1107	901
Street & Householders Directories	405	699	861	993
Title Page .....	5	—	—	—
Town Governments .....	—	—	767	899

# INDEX TO ADVERTISERS

	Page		Page
Almy Bigelow & Washburn...back bone and	4	Lloyd Andrew J Co.....	45
Ames A P Co.....	37	Lord & Herlihy Inc.....	36
Association of North American Directory Publishers.....	X	Lovett Charles W.....back cover	
Audet Alfred.....left bottom lines and	28	Low Daniel & Company.....	41
Baker Elliott R.....	49	Lubets & Lubets.....	
Beaver Automobile Co.....	23	back cover and right top lines	
Bedell Clyde I.....	44	Manning Wm F.....left bottom lines	
Belleau Adelard.....left top lines and	48	Martin John S Co.....	29
Berry Wm A.....right top lines and	31	Maurais Charles F.....	31
Bixby H M Co The.....left bottom lines and	34	Merchants National Bank...left top lines and	24
Blaney George A Insurance Agency Inc....		Metcalfe J S.....	22
left bottom lines and	39	Michaud's Bus Service.....left bottom lines	
Boston Expert Auto Radiator Works.....		Miller Raymond P.....left top lines	
back cover		Miller's.....	43
Burlen Robert & Son.....	28	Moody L B Co.....	49
Business Aid Shop.....	50	National Grand Bank of Marblehead.....	26
Cabeen John F Co.....left bottom lines and	46	National House Furnishing Co.....	36
Chamber of Commerce.....	Y	Naumkeag Steam Cotton Co.....	33
Chaput Paul N Inc.....left top lines and	39	Naumkeag Trust Co.....	2
Clark & Friend.....	29	New Essex House The.....	39
Colonial Garage Inc.....left bottom lines and	23	Newcomb & Gauss Co.....	47
Colonial Wall Paper Co.....left top lines and	45	Newhall Milo A & Co.....	47
Cote E Theodore.....	35	North Shore Fuel Corp.....back cover	
Crosby Wm H.....left top lines		North Shore Publishing Co Inc.....	44
Croughwell Henry J.....front cover		Norton Fred A.....front cover	
Danvers Co-operative Bank.....	26	O'Neil Contracting Co.....right top lines and	32
Danvers National Bank.....	26	O'Rourke Bros.....	43
Danvers Savings Bank.....	26	Ouellette Napoleon.....	48
Davison S G.....front cover and	22	Page & Goodwin Printing Co.....	47
Delande's Supply Co.....left top lines and	46	Parsons Laundry.....	42
Deschamps Bros.....	Z	Pauling Fredk S.....right top lines	
Dickinson E R.....front stencil		Pickering George W Coal Co.....	30
Donovan D J.....	40	Pickering John L Co.....right top lines	
Dooling & Coffey.....	46	Pitman & Brown Co.....bottom stencil and	3
Dow Lumber Co.....left top lines and	42	Polk R L & Co.....	22
Earley Radio Service Co.....left top lines and	48	Power D B H Inc.....	36
Elliott C L.....	29	Putnam George O.....	39
Falkowski Francis J.....left top lines		Roger Conant Co-operative Bank.....	27
Flynn Coal Co.....	29	Ropes Drug Co.....right top lines	
Ford Arthur S & Co.....	40	Rowe Motor Co.....	24
Frye David.....right top lines		Royal Beverage Shop.....left bottom lines	
Gardner Mattress Corp.....back cover		Salem Auto Spring Service.....	22
Gilbert & Cole Co.....top stencil		Salem Co-operative Bank.....	27
Goodell Zina Corp.....left bottom lines and	37	Salem Electric Lighting Co.....	34
Graves James E Inc.....	51	Salem Evening News.....	44
Harmony Grove Cemetery.....	35	Salem Five Cents Savings Bank...front cover	
Hawkes Plumbing & Heating Co.....		Salem Gas Light Co.....	37
left bottom lines		Salem Laundry Co.....	42
Hawthorne Hotel.....	38	Salem Morris Plan Co.....	27
Hickey Mary Louise.....	34	Salem Rubber Co.....	49
Hill B F Co.....	38	Salem Savings Bank.....	25
Holyoke Insurance Office.....		Salem Storage Warehouse Co.....	50
front cover and right top lines		Salem Sunday Tribune.....	44
Hutchinson Lumber Co.....	43	Silver's Supply Co Inc.....left top lines and	46
Hygrade Sylvania Corp.....	41	Skeffington Richard W.....back cover	
Irving Box Co Inc.....	28	Smith A C.....right top lines and	50
Jackman Motor Co.....left top lines and	23	Thomas Studio.....left bottom lines and	45
Kimball Bros.....left bottom lines		Trask Roofing Co.....	48
Lafayette Laundry.....	42	Warren Five Cents Savings Bank.....	27
Langmaid J P & Sons.....	43	Warren National Bank.....	25
LaPorte's Inc.....left top lines		Waters & Brown.....	38
Larrabee & Hingston.....	51	Webber Wm G Co.....right top lines	
Lavender Printing Co.....	47	Welch J J & Co.....	31
Learoyd & Co Inc.....	40	Welch & Moynihan Co.....	31
Lee & Osborn.....back cover		Whitten C E & Sons...left bottom lines and	24
Lefavour Music House.....front cover		Wilson Square Auto Supply.....	23
Leslie Sign System.....left top lines		Wilson & Emmerton...right top lines and	35
Leslie W J Co.....	28	Wilson & Robinson Inc.....right top lines	
Lincoln Hotel.....left bottom lines and	38	Witch City Auto Body Co.....back cover	

# INTRODUCTION

---

R. L. POLK & CO., publishers of the Salem City Directory, as well as more than 750 other city, county, state and national directories, present to subscribers and the general public, this, the 1933-34 edition of the Salem Directory, which also includes Peabody, Danvers and Marblehead. The present edition represents the third Polk directory of this community, and is completely standardized.

Confidence in the growth of the community's industry, population and wealth, and in the advancement of its civic and social activities, will be created as sections of this directory are consulted, for the directory is a mirror truly reflecting the community to the world.

The enviable position occupied by R. L. POLK & CO.'S directories in the estimation of the public throughout the country, has been established by rendering the best in directory service. With an unrivaled organization, and having the courteous and hearty cooperation of the business and professional men and residents, the publishers feel that the result of their labors will meet with the approval of every user, and that the Salem Directory will fulfill its mission as a source of authentic information pertaining to the community.

## Five Major Departments

The several essential departments are arranged in the following order:

THE MISCELLANEOUS DEPARTMENT for Salem, pages 14 to 19, presents a variety of information, such as lists of city and county officials; post office and public school directories; statistical review; historical sketch; and manufacturing, trade and civic surveys. Similar departments for Peabody, Danvers and Marblehead will be found at the beginning of their respective sections.

THE BUYERS' GUIDE, pages 21 to 52, printed on tinted paper, contains the advertisements of leading manufacturing, business and professional interests of Salem, Peabody, Danvers and Marblehead. These pages will be found particularly interesting and instructive to substantial purchasing factors. The advertisements have been carefully grouped by departments and are indexed under headings descriptive of the business represented. This is reference advertising at its best, and, as such, merits a survey by all buyers eager to familiarize themselves with sources of supply. The community's activities, in many interesting phases, are authentically pictured. In an ambitious and progressive community like Salem and vicinity, the necessity of having this kind of information immediately available, is very great, and frequently pressing. General appreciation of this fact is evidenced by the liberal support the city directory enjoys in the many fields which it serves.

THE ALPHABETICAL LIST OF NAMES of residents, business firms and corporations of Salem is included in pages 53 to 404. A feature of this section is the inclusion of the wife's name in parentheses following that of her husband. A similar list for Peabody appears in pages 545 to 697; for Danvers, in pages 767 to 859, and for Marblehead, in pages 903 to 992.

THE DIRECTORY OF HOUSEHOLDERS, INCLUDING STREET AND AVENUE GUIDE, for Salem, covers pages 405 to 540. In this section the names of the streets and avenues are arranged in alphabetical order; the residences and business houses are arranged numerically under the name of each street and avenue, and the names of householders and business concerns are placed opposite the numbers. A similar directory for Peabody, occurs in pages 699 to 766; for Danvers, in pages 861 to 898; and for Marblehead, in pages 993 to 1038.

THE CLASSIFIED BUSINESS DIRECTORY is included in pages 1039 to 1126. This department lists the various manufacturing, mercantile and professional interests of the whole community in alphabetical order under appropriate headings. This feature constitutes an invaluable and indispensable epitome of the business interests of the community. "The Directory is the common intermediary between Buyer and Seller." As such it plays no small part in the daily doings of the business world. "More goods are bought and sold through the Classified Business Directory than through any other medium."

#### Community Publicity

The directory reflects the achievements and ambitions of the community, depicting in truthful terms what it has to offer as a place of residence, as a business location, as an industrial site and as an educational center. To broadcast this information, the publishers have placed copies of this issue of the directory in Directory Libraries, where they are readily available for free public reference, and serve as perpetual and reliable advertisements of Salem, Peabody, Danvers and Marblehead, for business men, everywhere, realize that the city directory represents a community as it really is.

#### The Salem Directory Library

Through the courtesy of the publishers of the Salem City Directory, a Directory Library has recently been established in the offices of the Salem Chamber of Commerce, for free reference by the general public. This is one of more than 450 Directory Libraries installed in the chief cities of the U. S. and Canada by members of the Association of North American Directory Publishers, under whose supervision the system is operated.

The publishers appreciatively acknowledge the recognition by those progressive business and professional men who have demonstrated their confidence in the city directory as an advertising medium, with assurance that it will bring a commensurate return.

R. L. POLK & CO., Publishers.





# SALEM

CENTER OF THE BEAUTIFUL NORTH SHORE OF MASSACHUSETTS; THE MOST HISTORIC CITY IN THE EAST.

(Courtesy Salem Chamber of Commerce)

## Statistical Review

Form of Government—Plan B, consisting of mayor, 5 councillors-at-large and 6 ward councillors, who are elected for a period of 2 years.

Incorporated as a city.

Population—43,353 (1930 U. S. Census report). White population of age—males, 12,746; females, 14, 144. Total colored population—101; males 48; females 53. American-born population is 76.8% of the whole.

Area—8.2 square miles.

Altitude—Town House Sq. is 30 ft. average above low water.

Climate—Mean annual temperature, 51.8 degrees F.; average annual rainfall (or precipitation), 41.06 inches.

Parks—25, with total acreage of 375.22. Valuation of 14 parks \$148,430.00.

Assessed Valuation—\$58,223,510, with \$32.00 tax rate.

Bonded Debt—\$1,770,500 (net), 1933.

Financial Institutions—3 banks and 1 trust company. National Bank resources, \$3,578,891.25 (Oct. 25, 1933); deposits, \$3,251,158.11 (Oct. 25, 1933). Savings banks, with total deposits of \$41,875,908.73 (Dec. 1933). Building and loan associations, with total assets of \$7,338,859.35 (Oct. 1933).

Telephones in Service—5720.

Churches—24, representing leading denominations.

Building and Construction—Number of building permits issued, 460, valued at \$522,435 (July 1, 1932, to July 1, 1933).

Real Estate—From Jan. 1, 1933, to Dec. 26, 1933, 4,835 deeds recorded for Essex County.

Number of Manufacturing Establishments—106, employing 4,518 men and women, paying wages of \$4,165,968 annually, and having products valued at \$18,416,612 annually as per report covering the year 1932.

Trade Area—Retail area has radius of 16 miles, and population of 125,000.

Newspapers—1 daily, 1 Sunday and 1 weekly; also a Polish paper.

Hotels—4, with total of 200 rooms. Newest hotel opened in 1925 (Hawthorne Hotel).

Railroads—1, Boston & Maine.

Highways—The following highways run through, or to, the city: 2 State highways, (Loring Ave.), (Highland Ave.)

Airports—1, municipally owned airport in Beverly.

Amusements—4 moving-picture theatres, with total seating capacity of 3,400 persons; 1 "legitimate" theatre, with total seating capacity of 1,003 persons. Number of golf courses in, or near, the city—2.

Hospitals—1, with total of 150 beds.

Education—Chief institutions of higher learning, State Teachers College, Salem Commercial School, Hawthorne Institute. Number of public schools, 19.

including 1 senior high school. Number of parochial schools, 7. Number of pupils in public schools, 5,926; in parochial schools, 3,629. Number of teachers in public schools, 203. Value of public school property, \$595,668; parochial school property, \$298,440; college property, \$303,750, (as of June, 1933).

Public Libraries—1 public library and three branches, with total of 90,117 volumes.

City Statistics—Total street mileage, 63.7. Number of water meters, 5,755 (1932; light meters, 12,550; gas meters, 9,741 (as of Nov. 30, 1933). Capacity of water works, 2 reservoirs (10,000,000 and 20,000,000 capacity, with daily (1932) average pump of 4,247,868 gallons, 81-1 miles of mains, and plant valued at \$2,736,785.50 (1932). Sewers, sanitary 53.44 miles, surface 14.58 miles. Fire department has 59 permanent paid men, 33 call men, with 11 autos, 9 engines, 3 hose and chemical wagons, and 2 hook-and-ladder trucks. Value of fire department real estate and equipment, \$208,000.00. Police department has 74 men, with 2 stations and 9 pieces of motor equipment. Value of police department equipment, \$11,723.27.

### History

Salem was founded in 1626, and is one of the oldest cities in the United States. It has taken an active part in all the historic events of the country, and is today a prosperous, industrial and residential city, preserving more historic landmarks, relics and articles of Colonial interest than any other city in New England.

Here is the scene of the famous Witchcraft Delusion of 1692, the meeting place of the first Provincial Congress, and the site of the old North Bridge, where occurred the Colonies' first armed resistance to the British in the Revolution. Nathaniel Hawthorne, the celebrated author, was born in Salem in 1804, and here he lived and wrote, drawing most of his plots from the town of his birth.

Modern Salem is the shire town of Essex County and the retail center of about 200,000 people. It is a city of diversified industry and is famous for the manufacture of cotton goods, leather, shoes, incandescent lamps, radio tubes, games, etc. It has about seventy different kinds of manufacturing, represented by one hundred and fifty factories. Salem has a population of more than 43,000.

It is a city of homes. About sixty-five per cent of the dwellings are owned by the occupants. It is rated as a "B" city by the fire underwriters, which gives the city the lowest insurance rate possible.

### Location

Salem is located on the Eastern Division of the Boston & Maine Railroad, thirty minutes from Boston. It is sixteen miles north of Boston and has excellent train service. It is on the direct automobile route from Boston to Maine and New Hampshire summer resorts.

This city is located upon Salem Harbor, is cooled throughout the summer by delightful east winds and is sheltered from the extreme weather in winter. Salem is a shipping center with direct rail connections.

### Education

The high standard of Salem's schools is generally recognized. The State Teachers College is one of the oldest in America. In the Department of Education, a degree of Bachelor of Science in education is granted at the completion of four years. It is one of the largest normal schools in the state.

The High School is splendidly equipped with recreation rooms, libraries, laboratories, auditorium, study halls and gymnasium. It has nearly fifteen hundred students and a corps of sixty teachers.

There are sixteen grade schools with an enrollment of over forty-five hundred and one hundred and forty-two teachers. There are six parochial schools, two commercial schools, and two private schools.

The Public Library was formerly the home of Captain John Bertram. In 1887 this magnificent estate was given to the city for a public library. The Library, with 3 branches, contains 90,117 volumes.

### Clubs and Fraternities

The Rotary Club meets Tuesdays at 12:15 and the Kiwanis Club, Thursdays at 12:15, at the Hawthorne Hotel. There are three women's clubs: Salem Woman's Club, Thought and Work Club and the Society for Higher Education; also Salem Fraternity, the oldest boys' club in America, Y. M. C. A. (the first boys' branch in the world was organized in Salem), Young Woman's Association, Masons, Elks, Knights of Columbus, Odd Fellows and many others.

### Recreation

Salem has four motion-picture theatres, and two splendid golf courses—the North Shore Golf and Tennis Club and the Salem Country Club.

At Forest River Park there is a tourist camp, with running water and toilet facilities. It has a splendid salt water swimming pool and a new and attractive bath house. The park is under city supervision and is free.

The Salem Willows is a noted recreational park on the North Shore, with boating, bathing, fishing, shore dinners, ball park, open air theatre, dancing, bowling, etc. It is beautifully located on Salem Harbor.

### Churches

Salem has many beautiful churches, representing almost every denomination. The architecture of some of the churches is noteworthy.

The first meeting house for Congregational worship in America was erected in Salem in 1629, and continued as a place of worship for nearly three hundred years.

### Retail Trade

The retail section of Salem is the purchasing centre of approximately 200,000 people, and its stores are of a distinctly metropolitan character.

### Industry

The industries of the city are remarkably diversified. Good wages are paid. The living conditions are excellent. The city is unusually free from labor troubles. There is a splendid electric lighting plant, furnishing ample light and power for local needs, with a large super-power plant under construction to supply the growing demand of this section. The water supply is of the best.

Salem is a good city in which to live, and offers splendid inducements to prospective manufacturers.

### Hotels

The Hawthorne Hotel, erected by citizens of Salem, is situated at the junction of the Hawthorne Boulevard and Washington Square. It is of a distinctive type due to Colonial traditions and is undoubtedly the finest tourist and commercial hotel north of Boston. It affords a cool, charming stopping place for use of summer tourists as headquarters from which to enjoy, not only the historic treats of Salem, but many fine motor trips along the coast and through the woodlands of what many people consider the most attractive section of New England. It affords a central point for traveling men doing business anywhere in Essex County. Good meals, a comfortable night's rest, and an early start, without traffic complications, make it ideal for this class of patronage.

A commodious garage is located a short distance from the hotel. There are five smaller hotels, and two summer hotels at the Salem Willows.

### The Pioneers' Village

Forest River Park, Salem, Massachusetts. A correct reproduction of life in a Puritan settlement. Covers three acres and has 12 buildings. Built by the citizens of Salem as part of the Massachusetts Tercentenary of 1930. It has proved of such interest and educational value that it is being maintained as a permanent historical feature of the city. Open daily until dusk.

# POLK'S SALEM CITY DIRECTORY 1933-34

Copyright, 1934, by R. L. Polk & Co. of New England

## Miscellaneous Information

For information not found in this department see regular **Alphabetical Section** or under proper headings in the **Classified Business Directory**

### GOVERNMENT

#### CITY

City election is held on the Tuesday next following the first Monday in December  
Terms begin first Mon of January

#### OFFICERS

Municipal Bldg, 93 Washington  
Mayor—Hon George J Bates  
President of the City Council—Timothy W Fitzgerald  
Councillors-at-Large — Timothy W Fitzgerald, Jas R Dooley, Steph Francis, Steph A Whipple, Wm O Safford  
Ward Councillors—Ward 1, John P Rybicki; Ward 2, Thos A Kelleher, Ward 3, H Francis Dolan; Ward 4, Philip J Durkin; Ward 5, Edmund Talbot, jr; Ward 6, Wm B Griffin  
Agent Board of Health—John J McGrath  
City Auditor—John V Cook  
City Clerk—John J Connelly  
Assistant City Clerk—E Mabel Curtis  
City Collector—Arthur T Brennan  
City Electrician—Charles H Ashby  
City Engineer—Frank P Morse  
City Messenger—James B Kelleher  
City Physician—Israel Kaplan  
City Solicitor—James Kinsella  
City Treasurer—Charles G F Coker  
City Marshall—John C Harkins  
Acting Chief Fire Department—Joseph H Flynn  
Clerk of Committees—John V Cook  
Clerk of Committee on Military Aid—Charles H McGee  
Supt of Schools—George M Bemis

Inspector of Animals—Dr John H Seale  
Inspector of Buildings—Wm M Osgood  
Inspector of Milk—John J McGrath  
Measurers of Lumber—Daniel J O'Brien, George F Nichols, Herbert L Strickland  
Plumbing and Sanitary Inspector—Peter P Griffin  
Public Welfare Dept—Edith N Stoddard, clerk  
Purchasing Agent—David W Hamilton  
Sealer of Weights and Measures—George L Day  
Supt of Congress St Bridge—Patrick F Ahern  
Supt of Park and Shade Trees—Daniel J Phalen  
Supt of Hay Scales—John H Kane  
Supt of Public Buildings—Wm M Osgood  
Supt of Streets—Patrick J Kelley  
Supt of Infirmary—Wm T Jeffrey, off Fort av  
Water Dept—Elisha J Dionne, clerk  
Assessors—Patrick A McSweeney, chairman; Joseph F Hudon and Charles J Collins  
Board of Appeal—Alfred Audet, Geo W Hooper, James H Boulger, James F Lynch, John M Gray  
Board of Commissioners of Trust Funds—Mayor George J Bates, chairman, ex-officio; James J Welch, William J Sullivan, Josiah H Gifford, Ralph C Browne, E Mabel Curtis, secretary

School Committee—Mayor George J Bates, chairman, ex-officio; Elmer W Liebsch, Eleanore G Marchand, Louis A Kotarski, Norman R Auger, J Elmer Callahan, John A Murphy  
 Licensing Board—Richard D Seamans, chairman; Peter F Leonard, J Andrew Foisy  
 Board of Cemetery Commissioners—Geo B Farrington, chairman; Michael F McGrath  
 Board of Control—John C Harkins, City Marshal, sec; George L Day, Sealer of Weights and Measures, chairman; John J McGrath, Inspector of Provisions  
 Board of Health—Dr Wm V McDermott, Francis Brown and Napoleon Levesque  
 Dental Clinic—Dr Robt E Egan, dentist 5 Broad  
 Board of Public Welfare—Wm O Safford, Emile Brunet  
 Park Commissioners—Christian Lantz, chairman; John J Brophy, Paul N Chaput, Willard B Porter, Max Shribman  
 Registrars of Voters—Wm J Carson, chairman; James R Treadwell, Albert J Ledoux, John J Connolly, clerk and member ex-officio  
 Salem Planning Board—J Asbury Pitman, chairman; Harry S Perkins, Harry E Webber, Richd H Wiswall; Henry J O'Donnell, secretary

#### FIRE DEPARTMENT

Headquarters 30 Church Tel. 234  
 Joseph H Flynn, acting chief; Fred A Harney, acting deputy chief; Joseph W Gahagan, acting deputy chief; Henry C Wilson, aid to chief; James G Woods, aid to deputy chiefs; Raymond H Cheney, supvr  
 Engine No. 1—George I Crowley, captain; Charles J Burkinshaw, lieut, 30 Church  
 Engine No. 2—James P Buckley, captain; Richard T Hart, lieut, 142 North  
 Engine No. 3—Robert J Griffin, acting captain; 30 Church  
 Engine No. 4—John J Cunningham, lieut; Raymond Falkowski, acting lieut 415 Essex  
 Engine No. 5—George W Whelton, captain; Terence Nolan, lieut 64 Loring av  
 Engine No. 6—Edward W Flynn, captain; Arthur J Mulcahy, lieut 121 Webb  
 Ladder No. 1—Richard J Collins, captain; Arthur L Flynn, lieut 415 Essex  
 Ladder No. 2—James A Brennan, captain; William R Hart, lieut 142 North

#### Fire Alarm Telegraph

12 Salem Terminal Co  
 13 Essex near English  
 14 Derby and Daniels  
 15 Derby and Hardy  
 16 Allen and Webb  
 17 Derby and Becket  
 18 Washington and Front  
 19 Charter and Hawthorne Blvd  
 112 Derby and Central  
 114 Derby and Union  
 121 Plummer Farm School  
 122 Fort and Columbus aves  
 123 Columbus and Bay View aves  
 124 Fort and Bay View aves  
 125 Bay View ave near Cross ave  
 126 City Home  
 161 Salem Savings Bank 125 Wash  
 162 Salem Laundry 51 Lafayette  
 163 Peabody Museum 161 Essex  
 164 Geo W Pickering Coal Co 197 Derby  
 165 Naumkeag Trust Co  
 21 Essex and Central  
 23 Essex and Wash sq  
 24 Essex and Wash sq (east)  
 25 Spring and Webb  
 26 Washington sq and Briggs  
 27 Bridge and March  
 28 Bridge and Conant  
 29 Salem Jail  
 212 Gas Works, Bridge  
 213 Bridge and Pierce ave  
 214 B&M R R Car Shops, Northey  
 215 Cross and Saunders  
 217 Boardman and Emerton  
 218 Bridge and Northey  
 219 St Peter and Brown  
 221 Bridge near Ash  
 223 Essex and Derby sq  
 224 Essex and Liberty  
 225 Phillips School  
 261 Essex Inst 132 Essex  
 32 Margin and High  
 34 Essex and North  
 35 Jefferson ave opp Hathorne  
 36 Jefferson ave and Wheatland  
 37 Jefferson ave and Lawrence  
 39 Flint and Broad  
 312 Norman and Crombie  
 313 Summer and Broad  
 314 Summer and Endicott  
 315 Chestnut and Hamilton  
 316 Essex and Munroe  
 317 Highland ave near High School  
 318 Highland ave near Proctor  
 321 Nurses' Home Highland ave  
 322 Salem Hospital Highland ave  
 327 Highland ave & Swampscott rd  
 361 Holyoke Mutual Fire Ins 114 Wash  
 41 Washington and Federal  
 42 Essex and Barton sq  
 43 Town House sq  
 45 Essex and Boston  
 46 Federal and Beckford  
 47 Bridge and Lynn

48 Bridge and Goodhue  
 49 Federal and Flint  
 412 Proctor and Pope  
 413 Peter Sim & Sons 40 Beaver  
 414 Beaver near Silver  
 415 Summit and South  
 416 Ord and Maple  
 417 Bow and Logan  
 418 Boston near Safford  
 419 Boston and Prospect ave  
 421 Butler and Prospect  
 422 Nichols and Butler  
 423 Hanson and Grafton  
 424 Boston and Hanson  
 461 Hygrade Lamp Co 60 Boston  
 51 Washington and Dodge  
 52 Lafayette and Dodge  
 53 Lafayette and Gardner  
 54 Lafayette and Laurel  
 56 Lafayette and Ocean ave  
 57 Saltonstall School  
 58 Leach and Glover  
 512 Lafayette and Porter  
 513 Cabot and Cypress  
 514 Cabot and Roslyn  
 515 Leach opp Summit ave  
 516 Shore and Clifton aves  
 517 Lafayette near Naples rd  
 518 Lafayette near Raymond rd  
 521 National Lead Company  
 522 Lafayette and Loring ave  
 523 Forest ave and Linden  
 524 Hemenway and Savoy rds  
 525 Ocean ave and Canal  
 526 Loring ave and Broadway  
 527 Loring and Jefferson aves  
 528 Loring ave and Grant rd  
 532 Naumkeag Mills East Gardner  
 534 Palmer and Perkins  
 535 Harbor and Congress  
 536 Lafayette and Harbor  
 537 Salem and Palmer  
 541 Loring ave and Lincoln rd  
 543 Vinnin sq Swampscott line  
 551 Canal and Ropes  
 61 North and Bridge  
 62 North and Franklin  
 63 Barr and Harmony  
 64 Mason and Tremont  
 65 Mason and Oak  
 67 Mason and Grove  
 68 Flint and Oak  
 612 Dearborn and Felt  
 613 Mason and Buffum  
 614 Dearborn and Walter  
 615 North and Dearborn  
 616 Dunlap and Devereux  
 617 Tremont and School  
 621 Irving and Harrod  
 622 Balcomb and Oakland  
 623 Liberty Hill ave and Fairmount  
 624 North and Granite  
 625 North and Nursery  
 626 Chandler and Symonds  
 631 Cabot Farm  
 632 Kernwood  
 633 Lee and Orne  
 634 North and Orne

635 North Shore Babies Hospital  
 2 Blows—All out  
 2 Blows—Repeated 3 times; Water Department  
 3 Blows—Following alarm; Ladder Truck  
 4 Blows—Repeated 3 times; Military Call  
 5 Blows—Repeated 3 times; Out of City Call  
 7 Blows—Red Cross  
 10 Blows—Repeated 3 times; Police Call  
 General Alarm—One Round of Same Box  
 No School Signals—High School: 3 blows at 7:10 a. m.; Grammar, Primary and Kindergarten, 7:30 a. m. Evening Schools: 6:30 p. m. No Afternoon Session, 12:15 p. m. Tests—6:15 a. m. and 12.45 p. m. Curfew—8:45 p. m.

#### LIBRARY DEPARTMENT

##### Salem Public Library

370 Essex

Trustees—George J Bates, Mayor, chairmn ex-officio; Arthur H Phippen, secretary and treas; Frank W Benson, Wm V McDermott, John C Robson, J Foster Smith

Ralf P Emerson, librarian; Lilly S Abbott, Ruth E Sandstrom, Hazel F King, Carrie H Kinsman, Olive Owen, Elizabeth H McIntire, Natalie Towle, Mary H Polloch, asst; Ezekial S Call, jan; Jos Raymond, asst jan

Main Library—Week days from 9 a. m. to 9 p. m. Sundays (Reading Room only) from 2 to 6 p. m. Children's Room, Week days from 9 a. m. to 6 p. m.

South Branch—Martha T Pond, librarian; cor Lafayette and Ocean ave—Week days 2 to 6 and 7 to 9 p. m.

East Branch—Alice R Plummer, librarian; Washington Sq—Mondays, Wednesdays and Fridays, 2 to 6 and 7 to 8 p. m.

North Branch—Ruth E Sandstrom, librarian; Cogswell Schoolhouse, School St—Tuesdays and Fridays, 3 to 6 and 7 to 8 p. m.

#### POLICE DEPARTMENT

Headquarters: 17 Central

Tels 38 and 2049

John C Harkins, city marshal; John D Brennan, Gideon F Pelletier, captains; John P Barrett, Charles A R Duffee, Patrick J Lehan, lieuts; John J Brennan, Thomas F Hyde, sergeants; Wm E Lawson, clk

**SCHOOL DEPARTMENT****School Committee**

George J Bates, mayor and chairmn;  
Elmer W Liebsch, vice chairmn; J  
Arth Kenneally, sec; Norman R Au-  
ger, Dr Louis A Kotarski, Eleanore  
G Marchand, John Allen Murphy,  
James J Callahan  
Administrative Offices—School Ad-  
ministration Building, corner Sum-  
mer and Broad Streets  
Superintendent of Schools—George M  
Bemis  
Secretary to the Superintendent—J  
Arthur Kenneally  
Supervisor of Attendance—Thomas C  
Brown  
Clerk to Supervisor of Attendance—  
Aurore M Boivin  
Clerk of the Census—Catherine E Fox  
Bookkeeper—Helen C Ellard  
Supervisor of Drawing—Ruby M  
Clark  
Supervisor of Music—George H Mur-  
phy  
Director of Instrumental Music—  
Claude H Phillips  
Supervisor of Evening Schools—  
Nicholas T McNeil  
Supervisor of Physical Education—R  
William Broderick  
Teacher of Household Economics—  
Mabel E Hartford  
Teacher of Elementary Manual Train-  
ing—Harry Miller  
Supervisor of Health and Health  
Teaching—Agnes E Callahan  
School Physician—Charles H Hogan,  
M. D.; Office, 31 Pleasant  
Assistant School Physician—Dr Kath-  
arine C Sheehan, Office, 90 Federal  
Supervisor of Penmanship—Florence  
A Woodbury  
Teacher of Crippled Children—Mary J  
Henahan  
General Utility Man—James Kinsella

**COUNTY OFFICERS**

County Commissioners—Robert H  
Mitchell (Haverhill), chairmn; Fred-  
erick Butler (Andover), Raymond H  
Trefry (Marblehead)  
Associate Commissioners—Edwin C  
Lewis (Lynn), Edgar S Rideout  
(Beverly)  
Meetings held at Ipswich, 2nd Tues  
of April; Salem, 2nd Tues of July;  
Newburyport, 2nd Tues of Oct;  
Lawrence, last Tues of Aug; Salem,  
Newburyport or Ipswich, 4th Tues  
of Dec, as the commissioners may  
determine, also at Salem every Tues  
and Fri of each week  
Clerk of County Commissioners—  
Archie N Frost, (Andover)

Masters in Chancery—John M Barry,  
Alfred W Ingalls, William A Kel-  
ley and Frederick W Ryan (Lynn)  
County Treasurer—Harold E Thurs-  
ton (Lynn), office Court House,  
Salem  
Registrars of Deeds, Southern District  
—Moody Kimball (Newburyport)  
Assistants—Robt W Osgood (Swamp-  
scott), Arthur C Martinson (Sa-  
lem), office Court House, Salem  
Northern District—John E Fenton  
(Lawrence); Assistant, Jennie M  
Marston (Lawrence); Office Court  
House, Lawrence  
Sheriff of Essex County—Frank E  
Raymond (Salem); Earl E Wells  
(Lynn), Special Sheriff  
Deputy Sheriffs—William A Proctor  
(Amesbury), William R Tucker  
(Beverly), William E Dennett  
(Gloucester), Henry K Palmer  
(Georgetown), Alfred T Poole  
(Hamilton), Fred O Raymond  
(Haverhill), Louis D Brisson (Hav-  
erhill), John A Arthur (Lawrence),  
Gustave A Stachlhaus (Lawrence),  
Frank Marshall (Lawrence), J  
Frank Knapp (Lawrence), James  
Radcliffe (Lawrence), Frank E  
Wells (Lynn), Richard J White, jr  
(Lynn), Earl E Wells (Lynn), Ed-  
ward R Ayers, jr (Newburyport),  
Arthur Bishop (Rowley), Harry D  
Wheeler (Salem), Emil Levesque  
(Salem), William A Harrigan (Sa-  
lem), Walter H Brown (Peabody),  
Robt C Clark (Gloucester), Philip  
F Norcross (Salem), Edw P Ken-  
ney (Salem), George Bunting (Law-  
rence), Edward P Carlin (Salem),  
Harry M Cole (Lynn), Romeo C  
King (Lawrence), James R Mosher  
(Andover), Louis Silverman (Law-  
rence), Francis A Smith (Haverhill)  
Med. Examiner—James E Simpson;  
Associate, Ignatius Zielinski  
Keeper of Jail and Master of House of  
Correction, (Salem)—Frank E Ray-  
mond  
Deputy Master and Keeper—Edward  
P Carlin  
Keeper of Jail and Master of House of  
Correction, (Lawrence)—Geo Bunt-  
ing  
Public Administrator—Guy Newhall  
(Lynn)  
Commissioners to Qualify Public Of-  
ficers—Charles H Tucker, Joseph W  
Atwill, Frank A Turnbull (Lynn)  
State Aid Chief and Soldiers' Relief—  
Walter R MacDay, Agent  
Probation Officers—Ellen deS Barrett  
(Newburyport), Fred M Barr, Chas  
A Salisbury (Andover)  
County Engineer—Robert R Evans  
(Haverhill)

**COURTS**

First District Court of Essex County—George B Sears, judge; Robert W Hill, special justice; Charles A Murphy, associate justice; Morgan J McSweeney, clk; Blanche O Safford, asst clk; Helena V Sawyer, Cath L Begley, assts; William H Hart, probation officer; Pauline P Gould women and children probation officer; Grace E Jones, asst; George B Moreland, janitor; sessions daily except Sun and Holidays at 31 Central

Clerk of Courts for Essex County—Superior and Supreme Judicial, Office Court House, Salem—Archie N Frost, clerk (Andover)

Assistant Clerks—Ezra L Woodbury (Salem), Hollis L Cameron (Beverly), Charles H Metcalf (Beverly), Melville Rowand (Salem)

Deputy Assistant Clerks—Jere J Twomey (Andover), E Philip Littlefield (Danvers)

Superior Court—Chief Justice, Walter Perley Hall (Fitchburg)

District Attorney for Essex County—Hugh A Cregg (Methuen)

Assistant District Attorneys—Chas A Green (Salem), John E Wilson (Lynn), John J Ryan jr (Haverhill)

Court of Probate for Essex County—Judges Harry R Dow (N Andover), Edward B O'Brien (Marblehead)

Register—William F Shanahan (Swampscott), First Assistant—Arthur D Fowler (Marblehead), Second Assistant—Lucy S Brown (Salem)

Probate Records are kept at the office of the Register in the Court House, Salem

Probate Court sits at Salem 1st, 3rd and 5th Mon of the month, except 3rd and 5th Mon in August. Newburyport 4th Mon in Jan, Feb, March, May, June, July, Sept, Nov and Dec. Haverhill, 4th Mon in April and Oct. Lawrence every month except Aug.

Law Libraries, Essex County Law Library Assn., Salem—Sumner Y Wheeler, (Rockport), librarian

**MASS COMMONWEALTH OF**

Department of Public Safety, 126 Washington

Inspectors of Boilers and Examiners of Engineers—Henry Bushek and Edw F Masterson

Building Inspector—Harold J McCann  
Fire Inspectors—James A Trainor and Neal P Boyle

State Police—Lieut Detective Wm F Murray

Income Tax Division, 70 Washington, rm 12—Mial D Chase, income tax assessor

Commonwealth of Mass State Armory, 136 Essex

**MILITARY**

State Armory, Daniel J Fitzgerald, Armorer, 136 Essex

**UNITED STATES OF AMERICA**

Customs House, Danl F Connolly, depy collr, 178 Derby; Post Office, Federal Building, Margin St.—Albert Pierce, postmaster; Harry E Webber, asst postmaster; Thomas F Campbell, supt of mails; Thomas F Sheehan, asst supt of mails; John H J Trainor, formn

Sub Stations: One—Ellen M Lynch; Two—Walter P Upton; Four—Harry Boyd; Five—Arthur H Sinclair  
Hours: Lobby open 6 a m to 8:30 p m. Windows open 6:45 a m to 6:30 p m. Money Order Window open 8 a m to 6 p m daily except Sundays and Holidays

Internal Revenue—Federal Building, Margin St., Henry P Martin, dep collr; Henry Dolan, agt

Home Owners Loan Corp—Federal Building, Margin St., Timothy W Fitzgerald, br mgr

**RAILROAD STATIONS**

Boston & Maine Railroad; Boston & Maine freight house, 1 Jefferson av; Carltonville, 68 Flint; North Street, 61 North; Salem Station, Wash c Norman

**WARD BOUNDARIES****City of Salem****WARD 1**

All that part of the city enclosed by a line commencing at the eastern end of Essex at Collins' Cove and running southwesterly and westerly across the tracks of the Boston and Maine Railroad and thru the middle of Essex to the center of Town House Square, so



called, thence turning and running southerly by the middle of the location of the Boston and Maine Railroad to and thru the passenger station of said railroad to a point where the middle of New Derby, if extended, would cross said location, thence turning and running easterly by said extension of the middle line of New Derby across Washington, then thru the middle of said New Derby to the channel of the South River and thence by said channel to Salem harbor and by Salem harbor around Winter Island and Salem Neck and thru Collins' Cove to the point begun at, together with all the islands in the harbor.

## WARD 2

All that part of the city enclosed by a line commencing at the eastern end of Essex at Collins' Cove and running southwesterly and westerly across the tracks of the Boston and Maine Railroad and thru the middle of Essex to the center of Town House Square, so called, thence turning and running northerly thru the middle of Washington and continuing in a straight line to the channel of the North River, thence turning and running northerly and easterly by the channel of the said river to the Beverly city boundary line on Essex bridge and thence by Beverly Harbor and Collins' Cove to the point begun at.

## WARD 3

All that part of the city enclosed by a line commencing at the center of Town House Square, so called, and running westerly and southwesterly thru the middle of Essex and Highland av to the Lynn city boundary line thence turning and running easterly by the Lynn and Swampscott bounds to the middle of the location of the main line of the Boston and Maine Railroad, thence turning and running northeasterly and then northerly by the middle of said location to the center of Town House Square and the point begun at.

## WARD 4

All that part of the city enclosed by a line commencing at the center of Town House Square, so called, and running westerly and southwesterly thru the middle of Essex and Highland av to the Lynn city boundary line, thence turning and running westerly along the Lynn bounds to the Lynn, Peabody, and Salem bound stone at Spring Pond, so called, thence turning and running northeasterly, northerly, easterly and again northerly by the Peabody bounds to the bound stone at the North River canal, so called, thence turning and running southeasterly and northeasterly by said canal and the channel of the North River to the angle formed by the boundary lines of ward two, in said channel, thence turning and running southerly by the boundary lines of ward two to the center of Town House Square and the point begun at.

## WARD 5

All that part of the city enclosed by a line commencing at the eastern end of New Derby at its junction with Lafayette, thence running westerly thru the middle of New Derby and across Washington to the middle of the location of the Boston and Maine Railroad within the passenger station of said railroad, thence turning and running southerly and southwesterly by the middle of said location of the main line of said railroad to the boundary line of Swampscott, thence turning and running easterly, northeasterly and northerly by the Swampscott and Marblehead bounds to Salem harbor, thence by said harbor to the channel of the South River, thence by said channel to Lafayette to New Derby and the point begun at.

## WARD 6

All that part of the city lying northerly and westerly of the channel of the North River, and northerly and easterly of the North River canal, so called.

# When You Want to Know:

- where a person lives.
- what his occupation is.
- who lives at a certain number on a street.
- where a street is located.
- the correct spelling of a name.
- the officers of a corporation.
- the partners in a firm.
- the solution to any of scores of problems that pop up unexpectedly to annoy and baffle you.
- you can quickly find the answer in the City Directory.**

# **CLASSIFIED BUYERS' GUIDE**

OF THE CITY OF  
**SALEM, PEABODY, DANVERS  
AND MARBLEHEAD**

(MASSACHUSETTS)

**1933-34**



**The Buyers' Guide contains the advertisements and business cards of the more progressive business men and firms in the city, classified according to lines of business**

**R. L. Polk & Co., of New England**

Publishers

6 New Derby St.  
Salem, Mass.

354-360 Fourth Av.  
New York, N. Y.

**ADDRESSING & MAILING****Addressing and Mailing**

With large and fully equipped addressing and mailing departments in the larger cities, we can handle up to the largest campaigns quickly and at attractive prices.

**R. L. POLK & CO.**

**Directory Publishers, Mailing List Compilers, Addressing and Mailing Service**

New York, N. Y.      Philadelphia, Pa.      Los Angeles, Cal.      Milwaukee, Wis.      Indianapolis, Ind.  
Chicago, Ill.      Pittsburgh, Pa.      San Francisco, Cal.      Seattle, Wash.      Cleveland, Ohio

**ANTIQUES**

**J. S. METCALFE**

**Antiques**

Antique Clocks

Antique Furniture

Works of Art

73-75 FEDERAL, Cor. NORTH

Tel. SALEM 3503

**AUTOMOBILE SPRINGS**

**SALEM AUTO SPRING SERVICE**

*Axles and Wheels Straightened Cold*

TRUCK BODIES  
REPAIRED



ALL KINDS OF  
WOODWORK

31 Bridge Street

TEL. 4177

SALEM, MASS.

**AUTOMOBILE TIRES--BATTERIES--GREASING**

**S. G. DAVISON**

**Automobile Tires, Batteries & Greasing**

72 Lafayette, Cor. New Derby St.,  
SALEM, MASS.

TEL. 204

**WILSON SQ. AUTO SUPPLY**

*Accessories and Supplies*

Wilson Square, 1 Andover Street, Peabody, Mass.

Telephone 870

**AUTOMOBILES**

**DODGE BROTHERS**

*Motor Cars and Trucks*

**PLYMOUTH MOTOR CARS**

**BEAVER AUTOMOBILE CO.**

281 Derby Street

Tels.:  
2050 - 2051

 Salem, Mass.

**COLONIAL GARAGE, INC.**



Pontiac  
Cadillac and LaSalle  
Motor Cars



283 DERBY ST.

Tels. 1375 - 3906

SALEM, MASS.

**JACKMAN MOTOR CO.**

Sales *Packard* Service

**GENERAL REPAIRING**

274 DERBY STREET

SALEM, MASS.

**AUTOMOBILES****ROWE MOTOR COMPANY***Sales**Service*

20 - 22 FOSTER STREET

Telephone 840

Peabody, Mass.

**C. E. WHITTEN & SONS***Buick Motor Cars*

LYNN

SALEM

BEVERLY

Tels. Salem 2196, 2197

**BANKS****The Merchants National Bank**

OF SALEM, MASS.

The Oldest Banking Institution in the city, offers a complete  
BANKING SERVICE TO EVERY ONE

## DEPARTMENTS

Commercial  
Foreign Exchange  
Trust  
Safe Deposit Vault

Storage  
Travellers Checks  
Letters of Credit  
Thrift

Savings Department

JOSIAH H. GIFFORD - - - - - President  
ARTHUR L. LOUGEE - - - - - Vice President  
CARL F. A. MORSE - - - - - Vice President and Cashier  
ALBERT H. BARNETT - - - - - Assistant Cashier  
RALPH H. PORTER - - - - - Assistant Cashier

# Salem Savings Bank

125 Washington Street, Salem, Mass.

*"The Bank with the Chime Clock"*

---

**Assets - - over \$22,375,000**

**Deposits - - over \$20,000,000**

---

Deposits put on interest the 16th day of each month.

Dividends payable on and after April 16th and October 16th.

"LARGE ENOUGH TO SERVE YOU"

"SMALL ENOUGH TO KNOW YOU"

"STRONG ENOUGH TO PROTECT YOU"



# Warren National Bank

PEABODY, MASS.

No. 616

FOR OVER A CENTURY  
A LOCAL INSTITUTION

Owned and Managed by Local Men in the  
Interest of Local Business

**BANKS****Danvers Co-operative Bank**

11 Maple Street

**Danvers, Mass.**NEW SHARES ON SALE  
FEBRUARY AND AUGUSTHARRY E. JACKSON, President      LESTER S. COUCH, Vice President  
ARTHUR E. PERKINS, Treasurer and Clerk**The Danvers National Bank, Danvers, Mass.**

COMMERCIAL BANKING

United States Government Depository

17 MAPLE STREET

Phones 9 and 25

**DANVERS SAVINGS BANK**

1 CONANT STREET

DANVERS, MASS.

Incorporated 1850

ASSETS	-	-	-	-	\$8,000,000
DEPOSITS	-	-	-	-	\$7,100,000

Deposits begin to draw interest on the first day of each month.  
Dividends are payable on or after April first and October first.  
Office Hours—8 A. M. to 2 P. M.  
Saturday—8 A. M. to 12 M. and 6 to 7:30 P. M.

**NATIONAL GRAND BANK**  
MARBLEHEAD, MASS.ESTABLISHED 1831**GENERAL BANKING SERVICE**R. B. HAMSON, President  
FRANK COLE, Cashier





**Roger Conant Co-operative Bank**

Salem Savings Bank Building  
 125 WASHINGTON ST. SALEM, MASS.  
 TOWN HOUSE SQUARE

Vincent S. Peterson, President  
 Josiah H. Gifford, Vice President  
 J. B. Merrill, Treasurer  
 M. J. Reardon, Attorney

**SALEM CO-OPERATIVE BANK**

Incorporated April, 1888

71 Washington Street, Salem, Mass.

Ernest P. Lane, President                      S. Herbert Wilkins, Vice-President  
 Norman U. Armour, Treasurer              Wilfrid W. Brouillette, Asst. Treasurer

**SYSTEMATIC SAVINGS**

**The SALEM MORRIS PLAN CO.**

Ropes Drug Co. Building                      35 New Derby St.

**LOANS**



**INVESTMENTS**

L. 15      HOURS 8:30 A. M.—1:30 P. M. and 6-8 P. M. SATURDAYS

**WARREN FIVE CENTS SAVINGS BANK**

10 MAIN STREET, PEABODY, MASS.

Tels. 134 - 135

Deposits, \$11,100,982.99      Surplus, \$878,408.20

Deposits draw interest from the 15th day of each month

Dividends payable May 15th, Nov. 15th

Bank Hours—8:30 A. M. to 1:15 P. M.

Saturdays—June through September, 8:30 to 12:15

Open for Deposits Every Saturday Evening 7 to 9

**BOOKBINDERS****ROBERT BURLIN & SON***Bookbinders Paper Rulers*

Specialize in Embossed College and School Year Book Covers

Edition and Leather Flexible Binding

301 CONGRESS ST. BOSTON, MASS.

Telephones Hancock 6790 — 6791

**BOTTLED GOODS**

RETAIL LIQUOR BOTTLE STORE—PHONE 2498

**ALFRED AUDET**

ALL OBTAINABLE LIQUORS

*High Grade and Popular Brands*

11 FRONT STREET

SALEM, MASS.

**W. J. LESLIE CO.**

The Finest Assortment of

**Wines - Liquors - Beers - Ales**

JUST OFF ESSEX STREET

Delivery Service

11 DERBY SQUARE  
IN THE MARKETSALEM, MASS.  
TEL. 2335**BOX MANUFACTURERS***Irving Box Company, Inc.*

Estab. 1890

*Wood & Paper Boxes*PACKING CASES, CORRUGATED CASES, KINDLING WOOD  
TACKING BOARDS, SHOOKS, CANDY TRAYS

340 BRIDGE STREET

SALEM, MASS.

# Clark & Friend

225 ESSEX STREET, SALEM  
Telephone 579

Men's Clothiers and Haberdashers

New and exclusive high grade merchandise  
LADIES' COATS AND FURNISHINGS

## COAL

# CHARLES L. ELLIOTT COAL

Office and Yard  
141 Pine Street  
Tels. 498 - 499

Downtown Office  
31A Maple Street  
Tel. 1540

# FLYNN COAL COMPANY

*Coal - Wood - Cement*

Agents New England Coke

47 JEFFERSON AVE.

SALEM, MASS.

Phone Salem 959

# JOHN S. MARTIN COMPANY

*Coal - Oil - Coke - Wood*

ROOFING MATERIALS

MASONS' SUPPLIES

MOTOR ::

The Modern Automatic

STOKOR ::

Coal Burner

Phones 118 - 119

6 Cliff St., Marblehead



## GEORGE W. PICKERING COAL COMPANY

*Since 1838*

*The Name The Guarantee*

### OFFICES:

122 WASHINGTON ST. . . . .	SALEM . . . . .	Phone 5500
269 CABOT ST. . . . .	BEVERLY . . . . .	" 1442
25A MAPLE ST. . . . .	DANVERS . . . . .	" 547
PEABODY SQUARE . . . . .	PEABODY . . . . .	" 930
104 WASHINGTON ST. . . . .	MARBLEHEAD . . . . .	" 989

Telephone Your Nearest Office for

New England  
COKE



Range & Fuel  
OIL

NEW RIVER AND POCAHONTAS BITUMINOUS

**GEORGE W. PICKERING COAL COMPANY**

**JAMES J. WELCH & CO.**

ALSO

**WELCH & MOYNIHAN CO.**

*General Contractors*

Estimates and Complete Contracts Made and Performed for  
Masonry, Grading, Excavating, Concrete Work, Granolithic Walks,  
Steam Drill Work, Blasting

LOAM, GRAVEL AND STONE FOR SALE  
STEAM AND GAS SHOVEL TRUCKING AND TEAMING

Cement Floors, Landscape Work, Sewer Work and Land Drainage  
Stone Work of All Descriptions  
MEN BY THE DAY

15 FRONT STREET  
SALEM  
Tel. 2199-R

WILLOW STREET  
HAMILTON  
Tel. 250

QUARRY AT NEWBURY, MASS.  
Tel. 1780

**WILLIAM A. BERRY**

*Contractor and Builder*

JOBGING OF ALL KINDS

Office and Shop:

6 SCHOOL STREET Tel. 1057 DANVERS, MASS.

Residence—Cor. School and Poplar Sts.—Tel. 1431

Telephone 3970

**CHARLES F. MAURAI**

*Contractor and Builder*

Also

Appraiser of Building Fire Losses

43 LINDEN STREET

SALEM, MASS.

**CONTRACTORS**

L O A M

Sand — Cinders — Gravel

Lawns and Driveways Built

Grading of All Kinds

**O'NEIL CONTRACTING CO.**

76 WASHINGTON STREET

PEABODY, MASS.

Tel. Peabody 1199

**POLK'S BANKERS ENCYCLOPEDIA**

(PUBLISHED SEMI-ANNUALLY)

A full and complete list of Banks, Bankers, Trust Companies and Savings Banks in the U. S. and Canada, showing year established, and population of city or town where located. Gives more necessary data regarding Banks than any other Directory published.

A Synopsis of the Banking Laws of each state and Territory, along with Maps of each State and the principal Reserve Cities.

Price \$15.00 per volume—in Canada and foreign countries \$20.00.

**POLK'S BANKERS ENCYCLOPEDIA COMPANY**

431 Howard St., Detroit, Mich.

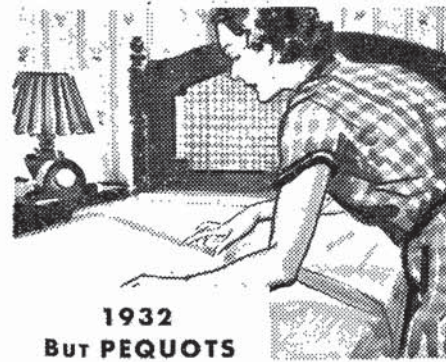
354-60 4th Ave., New York



1925  
SHE BOUGHT 2  
KINDS OF SHEETS



1930  
ONE BRAND  
WORE OUT



1932  
BUT PEQUOTS  
ARE STILL IN USE

**SHE  
COMPARED!**



"Pequots outwear any brand of sheets I've tried so far. Seven years ago I bought six [redacted] brand, and three Pequots..."

"They all had equal use. My wash is sent back from the laundry rough dry, but sheets are mangled at home. The last rag of [redacted] brand disappeared nearly 2 years ago. I replaced them with Pequot..."

"The original 3 still show no sign of wear, except, of course, to be a bit softer than the newer ones."

*Quoted from an unsolicited letter from a housewife in Council Crest, Portland, Oregon.*

**PEQUOT**



**SHEETS**

*America's most popular sheets*

*—because they wear longer!*

**PEQUOT MILLS — SALEM, MASS.**

## 34 Dancing & Dramatic Interpretation Teachers

*Mary Louise Hickey*

Teacher of

**Dramatic Interpretation**

Dramatic Coaching  
CONCERT READER

Studio:

48 MAIN STREET

Phone 336 Peabody, Mass.

Residence 52 Main St.

*Bessie M. Hickey*

Teacher of

**Dancing**

AND

**Physical Education**

Studio:

56 MAIN STREET

Phone 336 Peabody, Mass.

Residence 52 Main St.

## DRAPERIES

**The H. M. BIXBY CO.**

**RUGS — CARPETS — LINOLEUM  
WALL PAPERS — DRAPERIES**

Telephones 272 and 310

242 Essex Street

Salem, Mass.

## ELECTRIC LIGHT & POWER COMPANIES

**POWER**

*All our  
modern accomplishments  
lead back to POWER*

Without power, rapid transportation, communications, industry, as we know them today, would be impossible.

The benefits of electric power are not limited to your own personal use of that power in your home or business. They are reflected in all your other bills—for there is scarcely a commodity, the cost of which is not DECREASED by the use of electric power.

Do not hesitate to call us if you have an electric problem to solve. We are always at your service.

Telephone 1330

**Salem Electric Lighting Company**





**WILSON & EMMERTON**  
***Electrical Contractors*****HOUSE WIRING AND MOTOR WORK**

34 NORMAN STREET

SALEM, MASS.

PHONE 2209

**FLORISTS****Harmony Grove Cemetery**

SALEM, MASS. Tel. 554

ARTHUR L. PATTEE, Treas.-Supt.

**THE CEMETERY:** Guy H. Clark, Asst. Supt.

Lots of all sizes are available for purchase. All lots now sold are cared for perpetuity.

**BLAKE MEMORIAL CHAPEL:**

No charge is made for the use of the chapel; if desired an organist can be furnished for a moderate fee.

**THE CREMATORY:**

Is of the most modern construction; cremations can be arranged for direct or through any undertaker; if desired, commitment services can be held in the Hall of the Crematory. Niches in the Columbarium for deposit of ashes can be acquired.

**THE GREENHOUSES:** George W. McFarlane, Jr., Mgr.

Designs, cut flowers and flowering plants in great variety are for sale. Telephone orders receive careful attention. Tel. 4073.

**FURNITURE****E. T. COTE**  
**FURNITURE STORE**Stoves, Chamber and Parlor Suites, Buffets, Tables,  
Chairs, Washing Machines, Refrigerators,  
Gas Stoves, Oil Cloth, Feathers, Etc.

105 CONGRESS ST., SALEM, MASS.

TEL. 2669

**FURNITURE**

S. D. KERR

TEL. 3298

J. KERR

**NATIONAL HOUSE FURNISHING CO.****"THE HOME FURNISHERS"**

Cor. Front and Washington Sts., Salem, Mass.

MAIN AND ELM STS., GLOUCESTER

**D. B. H. POWER, INC.***Complete Home Furnishers*

Glenwood Ranges — Florence Burners

CASH

TERMS

Good Quality Always

**D. B. H. POWER, INC.**

140 WASHINGTON ST.

Phone 367

SALEM, MASS.

**GARAGES****LORD & HERLIHY, Inc.***Service Repairing**Storage*

Official Bendix and Brake Service

—◆◆—  
Official Headlight Station  
—◆◆—

154 Maple Street

Danvers, Mass.

Tel. 313

**“Serve the Public  
WELL and TRULY”**

*This means:*

Planning and carrying on our business so that we earn, deserve and obtain not alone the respect of the public for our companies as businesses, but also the public's good will toward us as servants intrusted with a vital job.

This is the ideal toward which all business should strive, and the ideal toward which our company is striving. Please let us know if we fail to serve you satisfactorily.

Telephone 1330

**Salem Gas Light Company**



**GRAIN**

**A. P. AMES COMPANY**

**Manufacturers of**

**Poultry and Dairy Rations**

10 WALNUT STREET

PEABODY, MASS.

TEL. PEABODY 350

**HARDWARE**

**ZINA GOODELL CORPORATION**

FRED L. WALL, Pres.

WILLIAM KINGSTON, Treas.

**MACHINE SHOP**

**HEAVY HARDWARE**

AUTO REPAIRING

TRUCKING

86-92 LAFAYETTE ST.

SALEM, MASS.

Telephones—780 - 781

**HARDWARE****B. F. HILL CO.**

DEALERS IN

**HARDWARE**Cutlery, Cordage, Agricultural Tools, Paints,  
Brushes, Flower and Garden Seeds

Kitchen Utensils, Electric Household Appliances, Marine Hardware

78 WASHINGTON ST.

SALEM, MASS.

**WATERS & BROWN***Builder's, Cabinet & Boat Hardware*MECHANICS' TOOLS AND  
CONTRACTORS' SUPPLIESPAINTS—OILS—VARNISHES  
BRUSHES, ETC.

Seeds — Fertilizers — Garden Tools and Cutlery

57-59 WASHINGTON, Cor. CHURCH ST.

SALEM

TEL. 1007 SALEM

**HOTELS****HAWTHORNE HOTEL**Where Reasonable Rates both for  
Rooms and Meals prevail.

EDGAR C. WRIGHT, Manager

Washington Square, cor. Essex Street, Salem, Mass.

Telephone 4080

**THE LINCOLN HOTEL**

ORILLE A. L'HEUREUX, Mgr.

ModernConvenient

Rooms by Day, Week or Month

117 LAFAYETTE ST.

Tel. 1589

SALEM, MASS.

## HOTELS

39

*The Family Hotel*

### **The New Essex House**

In the heart of the business and shopping district  
SPECIAL RATES TO PERMANENT GUESTS

Dining Room in connection

C. BOHANON, Manager

176 ESSEX ST., SALEM, MASS.

Tel. Salem 184

## ICE

Telephone 1095

### GEORGE O. PUTNAM

### ICE - WOOD

33 Holten Street

Danvers, Mass.

## INSURANCE

### George A. Blaney Insurance Agency, Inc.

### *Insurance - Surety Bonds*

20 MASONIC BLDG.

Tel.

70 WASHINGTON ST.

301

SALEM, MASS.

### **PAUL N. CHAPUT, Inc.**

NORMAN R. AUGER, Pres. & Mgr.

### *Insurance Brokers*

INSURANCE OF EVERY DESCRIPTION

106 Lafayette St.

Salem, Mass.

PHONE 965

**INSURANCE**

Established 1904

**D. J. DONOVAN**  
**INSURANCE**

SALEM OFFICE, 208 ESSEX ST.

Tel. Salem 322

PEABODY OFFICE, 154 LOWELL ST.

Tel. Peabody 710

**ARTHUR S. FORD & CO.**  
*Insurance, Real Estate*  
*and Mortgages*

221 Essex Street

Salem, Mass.

Telephone 404

Robert W. Learoyd

**LEAROYD and COMPANY**  
INCORPORATED  
**INSURANCE**

52 Maple Street, Danvers, Mass.—Danvers 268

207 Grossman Bldg., 16 Central Ave., Lynn—Tel. Jackson 2484

**CAUTION**

Pay no money in advance to itinerant Directory Canvassers. We are led to mention this from the fact that certain parties have been fraudulently using our publications as specimens, and by that means collecting money in advance. Before signing an order, see that it has the name of R. L. Polk & Co. printed thereon. We ask no payment until the work is delivered, and our solicitors have strict orders not to take payment for either advertising or subscriptions.

# Daniel Low & Company

DIAMONDS  
 JEWELRY  
 LEATHER GOODS  
 LUGGAGE  
 SILVERWARE  
 GIFT NOVELTIES  
 FINE CHINA  
 GLASSWARE



Established 1867

Now Nationally Known as  
 a Most Delightful Place to  
 Shop, by Mail, by Phone or in  
 Person.

The Busiest Corner in Salem  
 ESSEX AND WASHINGTON STREETS

## LAMPS

# Hygrade Lamps

A complete line of large style incandescent lamps, for lighting homes, mills, factories, public and office buildings, mines, railroads, street railways, stores, store windows, streets, traffic signals, signs, etc.

A complete line of radio receiving tubes, transmitting tubes; broadcasting, police and special transmitters, photo electric cells and commercial apparatus using electronic tubes.

*Sylvania*  
 RADIO TUBES

**Hygrade Sylvania**  
 CORPORATION  
 SALEM MASS

Executive-Sales Office, 500 Fifth Ave., New York City  
 Factories: Salem, Mass.; Emporium, Pa.; St. Marys, Pa.; Clifton, N. J.

## LAUNDRIES

**THE LAFAYETTE LAUNDRY**  
**COMPLETE LAUNDRY SERVICE**  
**ALL KINDS OF WORK**

**Phone 981**

**22 Porter St., Salem**

Salem, Beverly, Danvers, Hamilton & Wenham, Ipswich,  
 Middleton, Marblehead, Peabody

OUR TRUCKS COVER BEVERLY, PEABODY, DANVERS,  
 HAMILTON AND WENHAM  
 We Are Completely Equipped For All  
 Classes of Work

**PARSONS' LAUNDRY**

**QUALITY -- SERVICE**

12 NURSERY STREET

SALEM, MASS.

Telephones 392 and 4067

AN EFFICIENT LAUNDRY

**SALEM LAUNDRY COMPANY**

51-69 LAFAYETTE ST.—Phones 1340 - 1341—SALEM, MASS.

Everything Washable, Finished, Ready to Wear, Home Service,  
 Semi-Finished, Damp Wash and Thrifty Service

Laundry Work Collected and Delivered in Salem, Danvers, Marblehead, Pea-  
 body, Beverly, Swampscott, Topsfield, Wenham and adjacent North Shore.

RUG CLEANING—For cleaning all types and sizes of Oriental and Domestic Rugs. Custom  
 or Shampoo Process—all rugs insured while in our possession.

DRY CLEANING—Finest Grade Everything Insured FUR STORAGE—Fully Insured  
 In Our Own Vaults

## LUMBER

**DOW LUMBER COMPANY**

AARON B. COOSE, Manager



*Superior Retail  
 Lumber Service*

To All Points in the Salem District

YARD AND OFFICE

CANAL STREET EXTENSION

SALEM, MASS.

Tel. Salem 2876



**HUTCHINSON LUMBER CO.**



Hutchinson Wharf, Lynn, Mass.

Rough and Finished Lumber—Doors, Windows, Blinds,  
Builders' Hardware

**SERVICE**      Hardwood Floors—From our own Hot Kilns  
That Satisfies

Priv. Branch Exch. Jackson 940

H. J. HARDING, Pres. & Treas.

**J. P. LANGMAID & SONS**

*Lumber and Building Materials*

DRAIN PIPE  
FIRE BRICK  
WALL BOARD  
HYDRATED LIME

HAIR  
SAND  
LIME  
CEMENT  
ASPHALT SHINGLES

FLUE LINING  
IRON COLUMNS  
HARD PLASTER  
BUILDING PAPER

311 DERBY ST.

Telephone 840

SALEM, MASS.

**MONUMENTS**



*Permanency*

**O'Rourke Bros.**

**Monumental  
Work**

73 North Street, Salem

Tel. Salem 871

**MUSICAL INSTRUMENTS**

**MILLER'S**

(Miller's Music Store)

**FURNITURE**

MAYTAG WASHERS  
FRIGIDAIRE

**PIANOS --- RADIOS**

"Complete Home Outfitters"

149 ESSEX ST. - SALEM

Tel. 142



## NEWSPAPERS

# SALEM EVENING NEWS

Established 1880

The News of the World  
All the Local News



MEMBER OF THE ASSOCIATED PRESS  
AUDIT BUREAU OF CIRCULATION



155 Washington St.

Salem, Mass.

TELEPHONES:

Business Office—359 - 3637

Editorial Rooms—23 - 2880

# Salem Sunday Tribune

Established 1927

*All The Week End News*

*Sports — Social — Clubs*

4-6 SEWALL STREET

Telephone 433

SALEM, MASS.

## OPTICIANS

# CLYDE I. BEDELL

## OPTICIAN

EYES EXAMINED

GLASSES MADE

PRESCRIPTION WORK A SPECIALTY

272 Essex Street

Salem, Mass.

Phone 134

## OPTICIANS

45

### Andrew J. Lloyd Company

Established 1870

#### *Eyeglasses and Spectacles*



KODAKS, CAMERAS AND FILMS

Cine and Filmo Amateur Motion Picture Cameras  
and Projectors

DEVELOPING, PRINTING AND ENLARGING

ZIESS PRISM FIELD GLASSES

Fountain Pens, Barometers and Thermometers

292 ESSEX STREET, SALEM

also

BOSTON and CAMBRIDGE

## PAINTS & WALL PAPER

### COLONIAL WALL PAPER CO.

#### WALL PAPERS

#### Paints and Painters Supplies

Wholesale

Retail

NEWS BLDG.

161 WASHINGTON ST.

Tel. 5259

SALEM, MASS.

## PHOTOGRAPHERS

### THOMAS STUDIO

QUALITY — SERVICE

COMMERCIAL  
PHOTOGRAPHY

PHOTO  
FINISHING

101 Washington St.  
SALEM



COPYING,  
ENLARGING  
AND COLORING  
HOME PORTRAITS

Tel. 4187

228 Essex St.  
SALEM

**PLUMBERS**

**JOHN F. CABEEN CO.**  
**PLUMBING, HEATING**  
**OIL-O-MATIC AND FRIGIDAIRE**  
**SALES AND SERVICE**

81 North Street            ::            ::            Salem, Mass.  
 Phone Salem 2200

**PLUMBING SUPPLIES**

**DELANDE'S SUPPLY CO.**

WHOLESALE OF

**Plumbing, Heating, Electric and Radio Supplies**

18 NEW DERBY STREET

SALEM, MASS.

Tel. 2608

**SILVER'S SUPPLY CO., Inc.**

Established 1912

**Plumbing, Heating and Electrical Supplies**

WHOLESALE

RETAIL

Oil Burners and Supplies

44-48 LAFAYETTE ST.

Tel. 1681

SALEM, MASS.

**PRINTERS**

Commercial and Organization Printing  
 . . . of Every Description . . .

**Booling & Coffey**  
**Printers**

Telephone 275

Established 1907

17 Barton Square, Salem

**LAVENDER PRINTING CO.**

WILLIAM E. LAVENDER, Prop.

GOOD PRINTING WILL BRING RESULTS. IT MUST  
BE BACKED BY A CONSTRUCTIVE HELPFULNESS  
ON THE PART OF THOSE WHO PRODUCE IT—AND  
WE AIM TO THAT END.

Established in 1897

NO. 3 DODGE STREET : : : SALEM, MASS.

**NEWCOMB & GAUSS CO.**

JOHN W. GAUSS, Treas.

Established 1823

*Book and Commercial Printers*

Quality of Our Work and Prompt Service to Our Customers  
Is Our Aim

No. 1 CITY HALL AVE. Tel. 1001 SALEM, MASS.

**THE NEWHALL PRINTERS**

MILO A. NEWHALL & CO.

Designers and Producers of Printing that Gives Satisfaction

000

The extra cost of good printing, the kind we do, is of little account  
when the extra quality you get is taken into consideration

20-22 Central Street Telephone 1123 Salem, Mass.

**PAGE & GOODWIN PRINTING CO.**

Commercial and Society Printing

TICKETS, PROGRAMS, ETC.

STATIONERY, VISITING CARDS, WEDDING INVITATIONS  
AND ANNOUNCEMENTS—ENGRAVED OR PRINTED

Trade Composition

13 Lowell Street

Phone 277

Peabody, Mass.

**RADIO****EARLEY RADIO SERVICE CO.**

SALES  
INSTALLATION

20 New Derby St.,  
Salem, Mass.



SERVICE  
PARTS

Telephone  
6 3 8

**ROOFERS****ADELARD BELLEAU**

Successor to E. BELLEAU & SON

**SHEET METAL CONTRACTOR**

CORNICE  
SKYLIGHTS  
ROOFING

FURNACES  
TANKS  
VENTILATING

Workmanship—Our Pride, Your Profit

125 Canal Street

Tel. 774

Salem, Mass.

**NAPOLEON OUELLETTE  
CONTRACTOR**

TAR AND GRAVEL  
ROOFING

SHEET METAL WORK

1 HARBOR ST.

OFFICES,  
APARTMENTS  
FOR RENT

Convenient Location  
Plenty of Parking Space

Tel. 1564

SALEM, MASS.

**TRASK ROOFING COMPANY**

S. W. FRANCIS

Asphalt Shingle Application  
Paper and Metal Roofing  
Tar, Gravel and Slate Roofing

ROOFING MATERIALS — ASPHALT  
SHEET METAL WORK — FURNACES & REPAIRS

36 ST. PETER STREET

Tel. 288

SALEM, MASS.

**SALEM RUBBER CO.**

*Better  
Rubber  
and  
Sport*

*Tel. 269 Goods*

**SIGNS**

**ELLIOTT R. BAKER**

*Signs and Advertising*

*Theatrical Displays and Lettering*

246½ ESSEX STREET  
SALEM, MASS.

Tel. Connection

**STATIONERS**

**L. B. MOODY CO.**

WALTER R. TANCH, Pres. and Treas.

**STATIONERS**

Office Supplies, Blank Books, Loose Leaf Specialties  
Mimeograph Stencils, Ink and Supplies

GREETING CARDS FOR ALL OCCASIONS

Fountain Pen Headquarters—Circulating Library—Magazines

131 WASHINGTON ST.

Tel. 670

SALEM, MASS.

**Don't Use an Old Directory!**

One Address taken from an old Directory may send you miles out of the way and waste a whole day's time. You take pride in keeping a fresh stock of merchandise on your shelves—

*Why not avail yourself of fresh information for your daily use?*

**STORAGE WAREHOUSES**

# Salem Storage Warehouse Company

Spur Track, B. & M. R. R.

Storage For

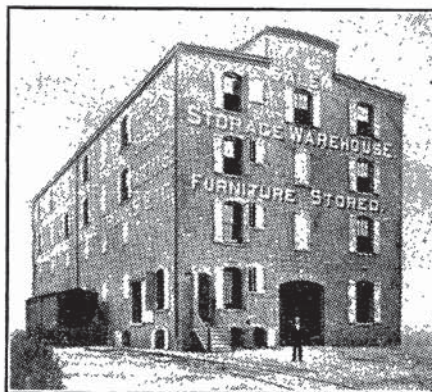
Furniture

Merchandise

Pianos

Trunks

Etc.

**TRUCKING**

## A. C. SMITH

### *Furniture and Piano Moving*

SAFE AND MACHINERY

Packing and Crating

TRUCKING AND TRANSPORTATION EVERYWHERE ANY TIME  
FOR SALE—Office Equipment, Etc.—Store Fixtures at all Times.

We have not only the DESIRE to serve but the ABILITY as well.

10 FOSTER STREET Telephone 320 SALEM, MASS.

**TYPEWRITING**

## THE BUSINESS AID SHOP

MISS A. LOUISE MESSER, Prop.

Addressing and Mailing

TYPEWRITING

PUBLIC STENOGRAPHER

GENERAL OFFICE WORK

Reliable Mailing Lists

MULTIGRAPHING

208 ESSEX ST., Room 14

Telephone 2836

SALEM, MASS.



**LARRABEE & HINGSTON**

**WOODWORKERS**

**TANKS, TUBS, PINWHEELS, ETC.**

**TANNERY SUPPLIES**

19 Howley Street

Peabody, Mass.

Telephone 1981

**YACHT & BOAT BUILDERS**

**JAMES E. GRAVES, Inc.**

**YACHT YARD**

Winter Storage and Repairs of All Kinds

Boats Built to Order

Tenders in Stock

**Complete Stock of Yachting Supplies**

Boats for Charter — Sailing Parties

The recent acquisition of the former Marblehead Yacht Yards, Inc., adds  
Increased Facilities for Better Service

Tel. Marblehead 122

MARBLEHEAD, MASS.

"The  
DIRECTORY  
IS THE COMMON  
INTERMEDIARY  
BETWEEN  
BUYER AND SELLER"

*R. L. Poole*

# ABBREVIATIONS

acct ..... accountant  
 adv ..... advertising  
 agri ..... agricultural  
 agt ..... agent  
 al ..... alley  
 Am ..... American  
 appr ..... apprentice  
 apts ..... apartments  
 archt ..... architect  
 asmlr ..... assembler  
 Assn ..... Association  
 asst ..... assistant  
 atndt ..... attendant  
 atty ..... attorney  
 auto ..... automobile  
 av ..... avenue  
 bdg ..... boarding  
 bet ..... between  
 bgemn ..... baggageman  
 bkbndr ..... bookbinder  
 bkpr ..... bookkeeper  
 bldg ..... building  
 bldr ..... builder  
 blk ..... block  
 blksmith ..... blacksmith  
 Blvd ..... Boulevard  
 br ..... branch  
 brklyr ..... bricklayer  
 brkmn ..... brakeman  
 cabtmkr ..... cabinetmaker  
 capt ..... captain  
 carp ..... carpenter  
 cashr ..... cashier  
 ch ..... church  
 chauff ..... chauffeur  
 chf ..... chief  
 civ ..... civil  
 clk ..... clerk  
 clnr ..... cleaner  
 collr ..... collector  
 com ..... commission  
 coml ..... commercial  
 commr ..... commissioner  
 compt ..... comptometer  
 cond ..... conductor  
 confr ..... confectioner  
 cons ..... consulting  
 contr ..... contractor  
 cor ..... corner  
 corres ..... correspondent  
 ct ..... court  
 ctr ..... cutter  
 del ..... delivery  
 dept ..... department  
 depy ..... deputy  
 dicta ..... dictaphone  
 dist ..... district  
 dlr ..... dealer  
 dmnstr ..... demonstrator  
 dispr ..... dispatcher  
 do ..... ditto or same

dom ..... domestic  
 drftsmn ..... draftsman  
 drsmkr ..... dressmaker  
 e or E ..... East  
 elec ..... electrical  
 electn ..... electrician  
 electro ..... electrotyper  
 elev ..... elevator  
 embdr ..... embroiderer  
 emp ..... employe  
 emp agcy ..... employment agency  
 eng ..... engineer  
 e s ..... east side  
 est ..... estate  
 exch ..... exchange  
 exp ..... expressman  
 flgmn ..... flagman  
 fnshr ..... finisher  
 forldy ..... forelady  
 formn ..... foreman  
 frt ..... freight  
 ft ..... foot  
 ftr ..... fitter  
 furn ..... furniture  
 furng ..... furnishing  
 furn rms ..... furnished rooms  
 gasftr ..... gasfitter  
 gdnr ..... gardener  
 gds ..... goods  
 genl ..... general  
 govt ..... government  
 gro ..... grocer  
 h ..... householder  
 hairdrsr ..... hairdresser  
 hd ..... hand  
 hdqrs ..... headquarters  
 hdw ..... hardware  
 hlpr ..... helper  
 hngr ..... hanger  
 hosp ..... hospital  
 implts ..... implements  
 imprt ..... importer  
 inc ..... incorporated  
 ins ..... insurance  
 inspr ..... inspector  
 instr ..... instructor  
 int rev ..... internal revenue  
 jwlr ..... jeweler  
 kpr ..... keeper  
 lab ..... laborer  
 lieutenant ..... lieutenant  
 lino ..... linotype  
 litho ..... lithographer  
 lmr ..... lumber  
 lndrs ..... laundress  
 lndymn ..... laundryman  
 ltd ..... limited  
 mach ..... machinist  
 mdse ..... merchandise

mch ..... mechanical  
 mer ..... merchant  
 Met ..... Metropolitan  
 mfr ..... manufacturer  
 mfg ..... manufacturing  
 mgr ..... manager  
 mkr ..... maker  
 mkt ..... market  
 mldr ..... molder  
 mlnr ..... milliner  
 mn ..... man  
 msngr ..... messenger  
 mstr mech ..... master mechanic  
 mtrmn ..... motorman  
 mus ..... music  
 mut ..... mutual  
 n or N ..... North  
 Natl ..... National  
 n e ..... northeast  
 nr ..... near  
 n s ..... northside  
 n w ..... northwest  
 opp ..... opposite  
 opr ..... operator  
 osteo ..... osteopath  
 pass ..... passenger  
 pat ..... patent  
 pdlr ..... peddler  
 pharma ..... pharmacist  
 phone ..... telephone  
 photog ..... photographer  
 phys ..... physician  
 pk ..... park  
 plr ..... packer  
 pl ..... place  
 plmbr ..... plumber  
 plstr ..... plasterer  
 pntr ..... painter  
 PO ..... postoffice  
 pres ..... president  
 prin ..... principal  
 prod ..... produce  
 prof ..... professor  
 prop ..... proprietor  
 prov ..... provisions  
 prsfr ..... pressfeeder  
 prsmn ..... pressman  
 ptrnmkr ..... patternmaker  
 pub ..... publishing  
 publr ..... publisher  
 purch ..... purchasing  
 r ..... boarder or roomer  
 rd ..... road  
 R D ..... Rural Delivery  
 real est ..... real estate  
 rec ..... receiving  
 rep ..... representative  
 repr ..... repairer  
 reprmn ..... repairman

restr ..... restaurant  
 ret ..... retail  
 Ry ..... Railway  
 RyMS ..... Railway Mail Service  
 s or S ..... South  
 sav ..... savings  
 sch ..... school  
 se ..... southeast  
 sec ..... secretary  
 sergt ..... sergeant  
 ship ..... shipping  
 slsldy ..... saleslady  
 slsmgr ..... salesmanager  
 slsmn ..... salesman  
 smstrs ..... seamstress  
 soc ..... society  
 solr ..... solicitor  
 sq ..... square  
 ss ..... southside  
 sta ..... station  
 sta eng ..... stationary engineer  
 sten ..... stenographer  
 stereo ..... stereotyper  
 stmfr ..... steamfitter  
 str ..... steamer  
 supt ..... superintendent  
 supvr ..... supervisor  
 surg ..... surgeon  
 sw ..... southwest  
 switchmn ..... switchman  
 tehr ..... teacher  
 tel ..... telegraph  
 ter ..... terrace  
 tmkpr ..... timekeeper  
 tmstr ..... teamster  
 tndr ..... tender  
 trans ..... transportation  
 trav ..... traveling  
 treas ..... treasurer  
 twp ..... township  
 undtkr ..... undertaker  
 uphol ..... upholsterer  
 US ..... United States  
 USA ..... United States Army  
 USN ..... United States Navy  
 vet ..... veterinary  
 vulc ..... vulcanizer  
 w or W ..... West  
 whol ..... wholesale  
 whsemn ..... warehouseman  
 wid ..... widow  
 wkr ..... worker  
 wks ..... works  
 ws ..... westside  
 wtchmn ..... watchman  
 ydmn ..... yardman  
 ydmstr ..... yardmaster

## ABBREVIATIONS OF GIVEN NAMES

Abraham ..... Abr  
 Alexander ..... Alex  
 Alfred ..... Alf  
 Archibald ..... Arch  
 Arthur ..... Arth  
 August ..... Aug  
 Benjamin ..... Benj  
 Catherine ..... Cath

Charles ..... Chas  
 Daniel ..... Danl  
 Edward ..... Edw  
 Elizabeth ..... Eliz  
 Eugene ..... Eug  
 Frederick ..... Fredk  
 George ..... Geo

James ..... Jas  
 Joseph ..... Jos  
 Katherine ..... Kath  
 Margaret ..... Margt  
 Michael ..... Michl  
 Patrick ..... Patk  
 Richard ..... Richd

Robert ..... Robt  
 Samuel ..... Saml  
 Solomon ..... Sol  
 Stephen ..... Steph  
 Theodore ..... Theo  
 Thomas ..... Thos  
 William ..... Wm